

BASE ID	MIN "T"	MAX PIPE SIZE
60"	5"	36"
72"	6"	48"
84"	7"	54"
90"	7.5"	60"
96"	8"	60"

SEE BACK OF SHEET FOR MANHOLE GENERAL NOTES.

CITY OF SPRINGFIELD, OHIO
SERVICE DEPARTMENT

**NO. 1
MANHOLE**

DATE
JUL 98
DEC 03
JUN 21

STANDARD DRAWING MH-1

APPROVED _____ CITY ENGINEER

GENERAL NOTES FOR MH-1

GENERAL:

WITH NORMAL SOIL AND SITE CONDITIONS THIS STANDARD PRECAST MANHOLE MAY BE USED FOR ANY REQUIRED MANHOLE DEPTH.

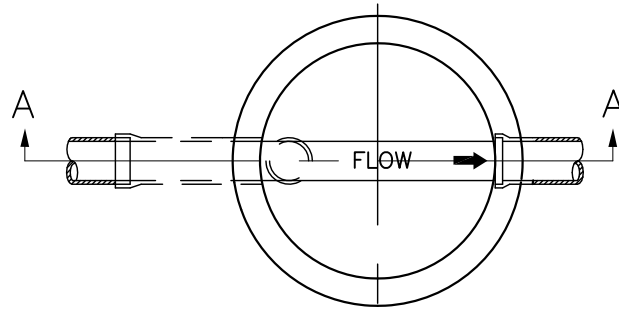
SECTIONS OF THE PRECAST MANHOLE SHALL BE CAST AND ASSEMBLED WITH ALL TONGUE OR ALL GROVE ENDS UP. LIFT HOLES MAY BE PROVIDED IN EACH SECTION FOR HANDLING.

BASES FOR NUMBER 1 MANHOLES ARE SHOWN WITH MONOLITHIC FLOOR AND RISER WHICH MAY BE CAST IN ONE OR TWO OPERATIONS. A PERMISSIBLE ALTERNATE IS TO CAST AND SHIP THE FLOOR AND BARREL SEPARATELY. OPENING FOR INLET AND OUTLET PIPES SHALL BE PROVIDED, EITHER WHEN THE UNIT IS CAST OR LATER, TO MEET PROJECT REQUIREMENTS. BOTTOM CHANNELS MAY BE FORMED OF CONCRETE PRECAST IN THE BASE OR BY FIELD CONSTRUCTION AS SHOWN ON MH-1.

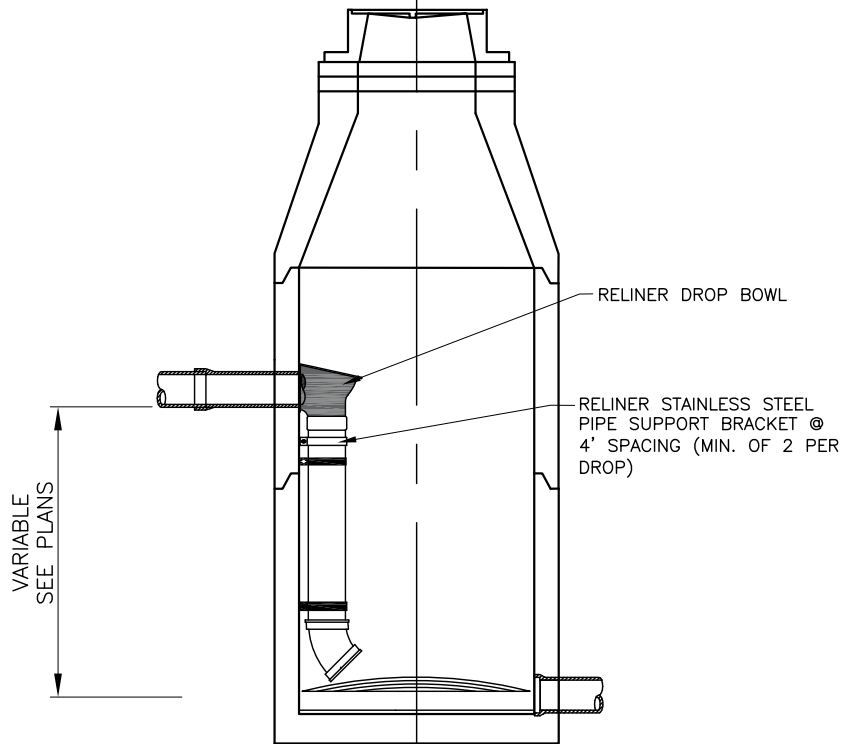
CONNECTIONS BETWEEN PRECAST MANHOLE SECTIONS AND PIPES ON SANITARY SEWERS SHALL BE SEALED WITH RESILIENT CONNECTORS CONFORMING TO ASTM C-923.

JOINT SEAL BETWEEN PRECAST MANHOLE SECTIONS ON SANITARY SEWERS SHALL BE RESILIENT AND FLEXIBLE GASKET JOINTS PER ASTM C-443

STANDARD MANHOLE



SECTIONAL PLAN

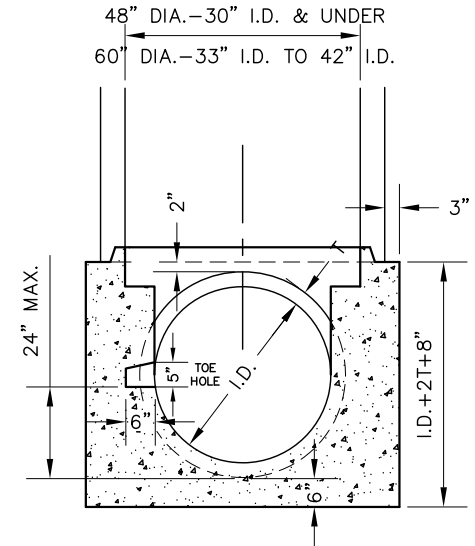
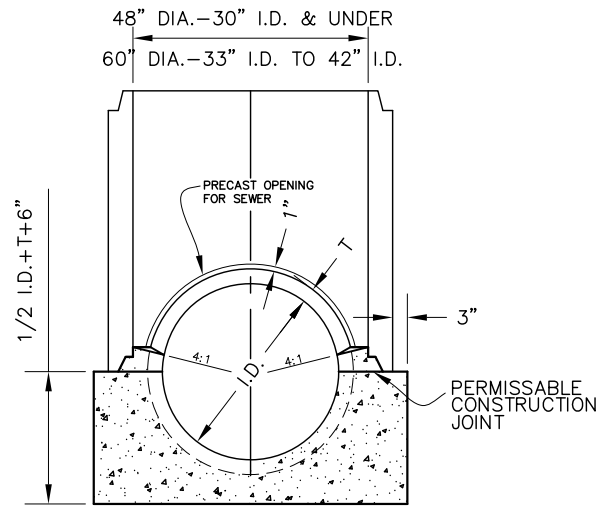
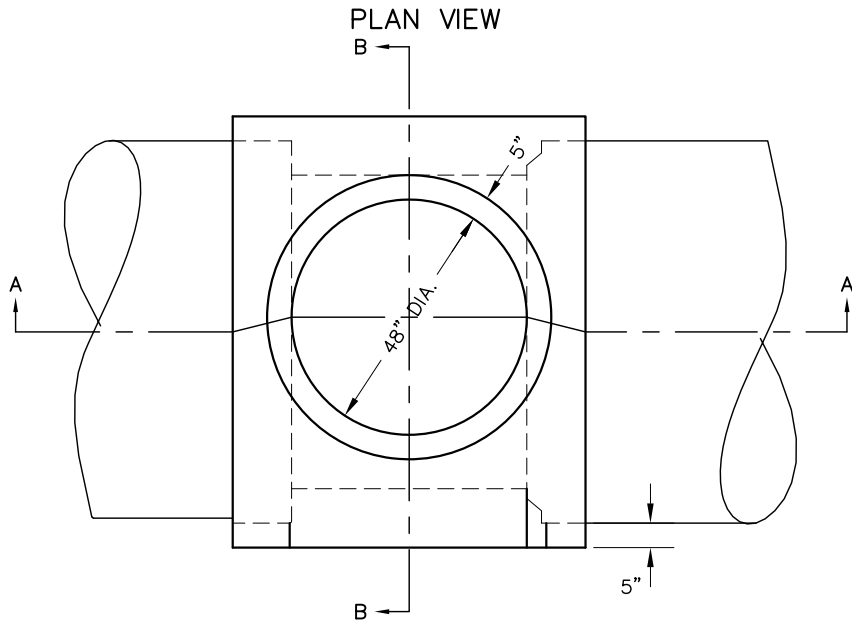


SECTION A-A

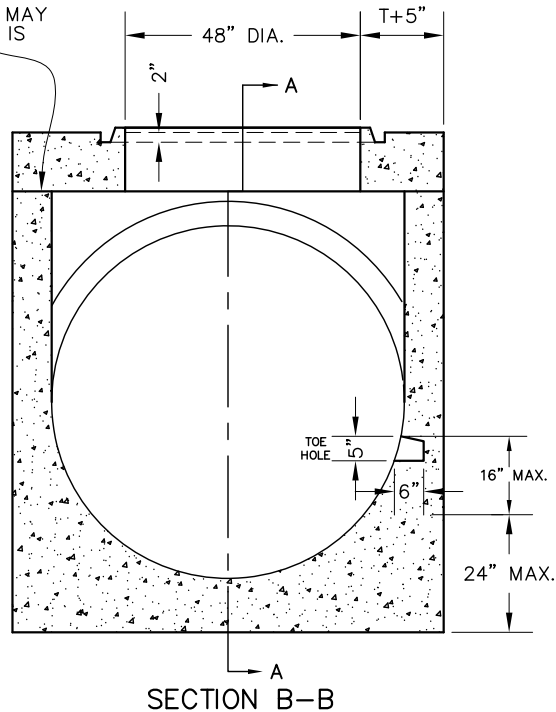
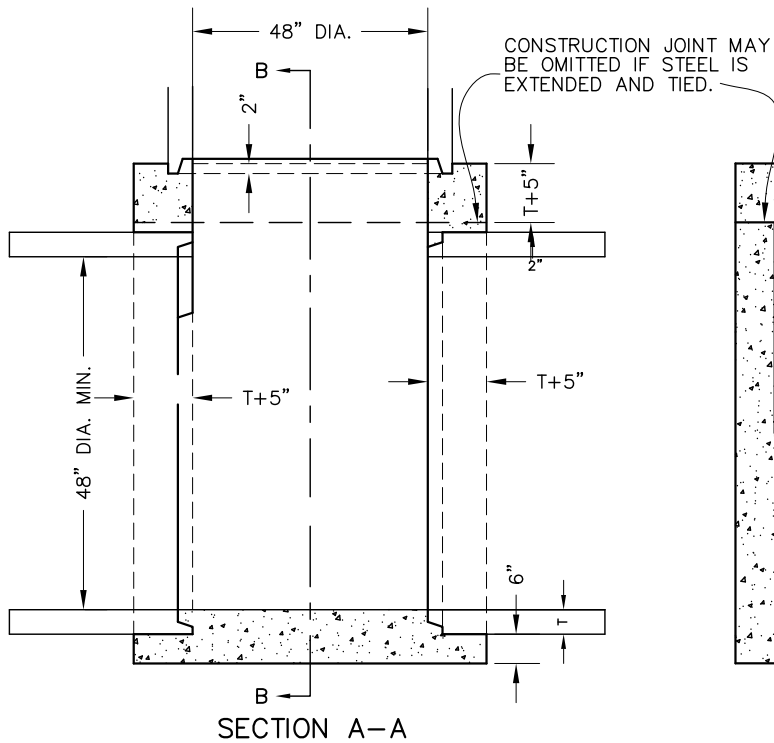
THIS MANHOLE SHALL BE CONSTRUCTED THE SAME AS SCD MH-1, WITH THE ADDITION OF AN INSIDE DROP SYSTEM USING THE RELINER/DURAN INC. DROP BOWL.

DROP BOWL SHALL BE INSTALLED PER MANUFACTURER'S SPECIFICATIONS.

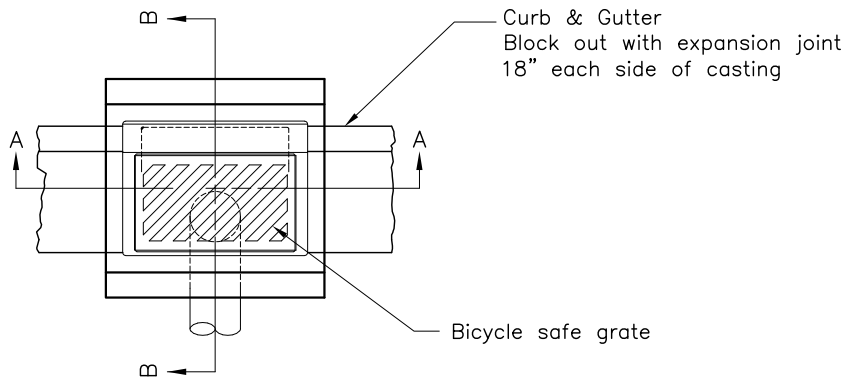
CITY OF SPRINGFIELD, OHIO SERVICE DEPARTMENT	
NO. 2 MANHOLE	
STANDARD DRAWING MH-2	
DATE JUL 98 JUN 21	APPROVED _____ CITY ENGINEER



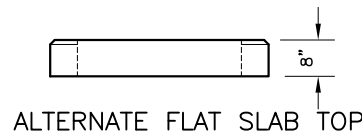
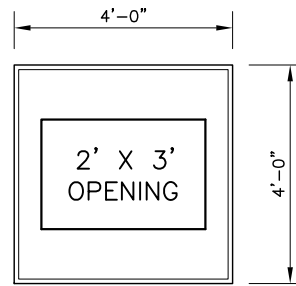
MANHOLE BASES ON SEWERS 42" AND UNDER



CITY OF SPRINGFIELD, OHIO SERVICE DEPARTMENT	
NO. 5 MANHOLE	
STANDARD DRAWING MH-5	
APPROVED _____	DATE JUL 00 JUN 21 CITY ENGINEER



PLAN

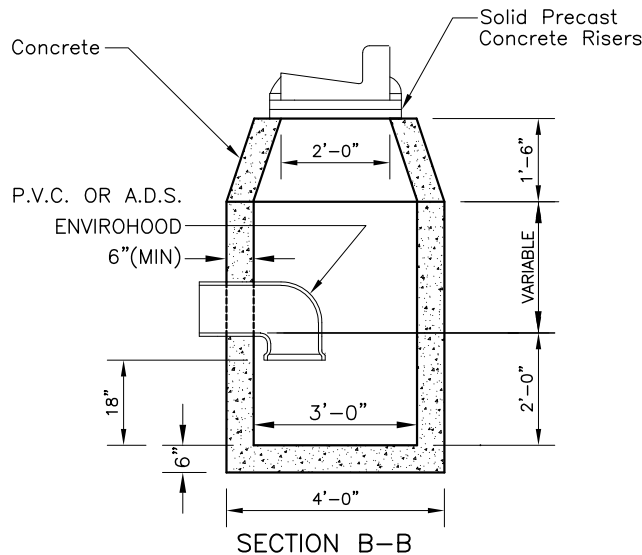
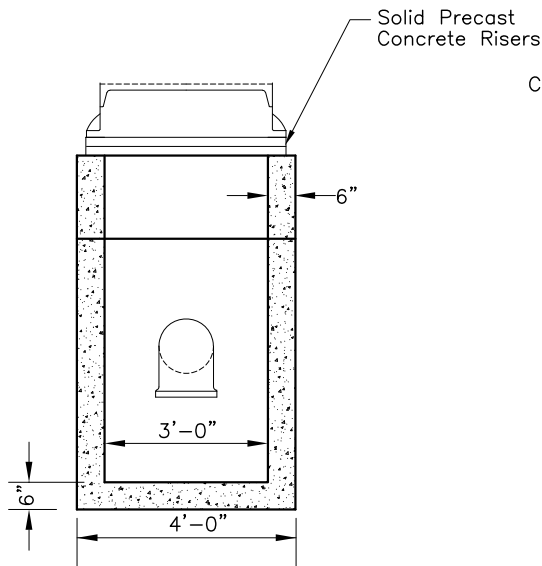


NOTE - USE NEENAH R-3246, (WITH TYPE R GRATE) OR EAST JORDAN #7030 (WITH TYPE M2 GRATE) CURB INLET FRAME AND CURB BOX OR EQUAL. IF A FLAT CASTING IS SPECIFIED, USE NEENAN R-3406 OR EAST JORDAN #5395.

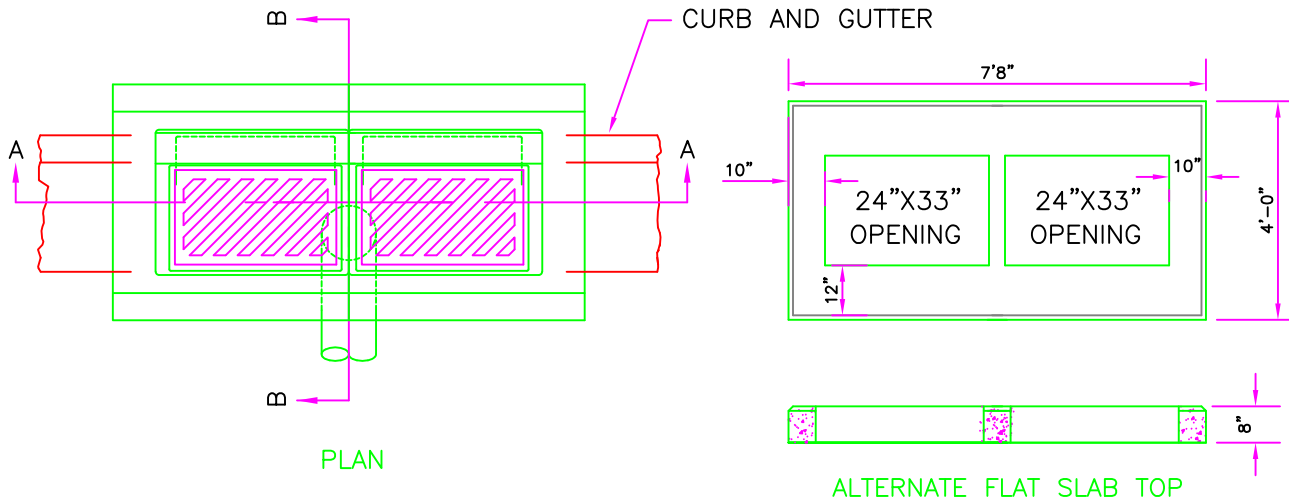
ALL PRECAST BASINS SHALL INCLUDE TWO ROWS OF SOLID CONCRETE BRICK PLACED BETWEEN THE TOP OF THE PRECAST BOX AND THE BOTTOM OF THE CASTING.

BASINS MAY BE OF PRECAST CONSTRUCTION, CONSTRUCTED OF 8" SOLID CONCRETE BLOCK OR POURED FROM 4000 PSI CONCRETE. ALL INTERIOR WALLS OF CONCRETE BLOCK BASINS SHALL BE PLASTERED WITH A MORTAR MIX.

BRICKS UNDER TRAPS FOR SUPPORT WILL NOT BE PERMITTED.



CITY OF SPRINGFIELD, OHIO SERVICE DEPARTMENT	
STANDARD NO. 1 CATCH BASIN	DATE JUL 98 NOV 03 JUN 21
	STANDARD DRAWING CB-1
APPROVED _____	CITY ENGINEER

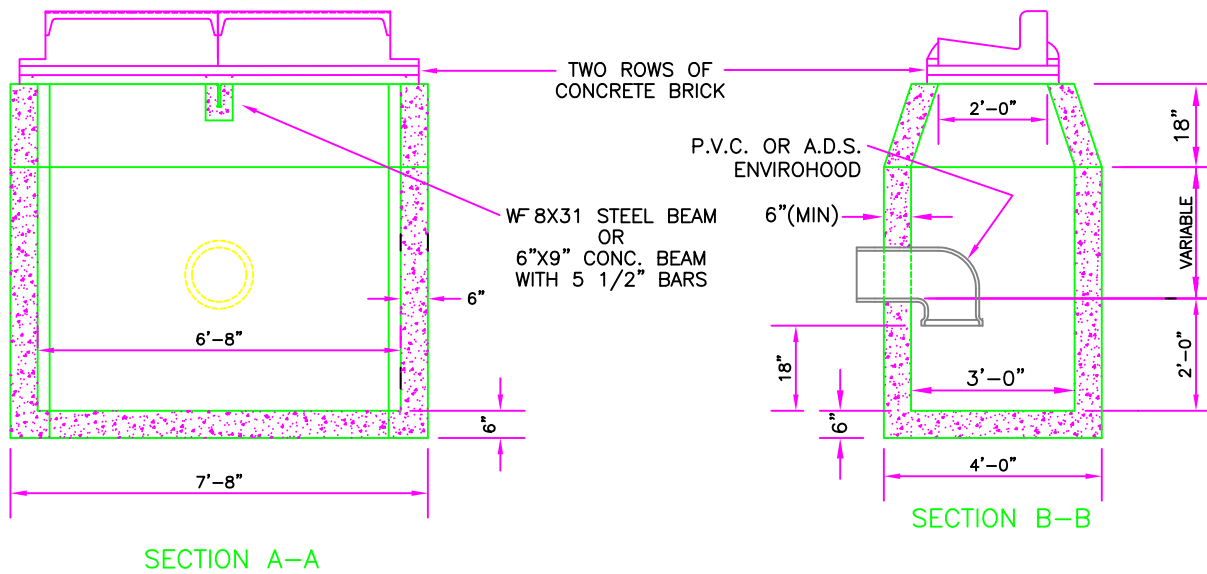


NOTE - USE NEENAH R-3295 W/(3) FLANGE, LEFT OR RIGHT REMOVED, WITH TYPE R-3067 GRATE AND R-3290 DR/DL CURB BOX OR EQUAL

ALL PRECAST BASINS SHALL INCLUDE TWO (2) ROWS OF SOLID CONCRETE BRICK PLACED BETWEEN THE TOP OF THE PRECAST BOX AND THE BOTTOM OF THE CASTING.

BASINS MAY BE OF PRECAST CONSTRUCTION, CONSTRUCTED OF SOLID 8" CONCRETE BLOCK OR POURED FROM 4000 PSI CONCRETE. ALL INTERIOR WALLS OF CONCRETE BLOCK BASINS SHALL BE PLASTERED WITH A MORTAR MIX.

BRICKS UNDER TRAPS FOR SUPPORT WILL NOT BE PERMITTED.



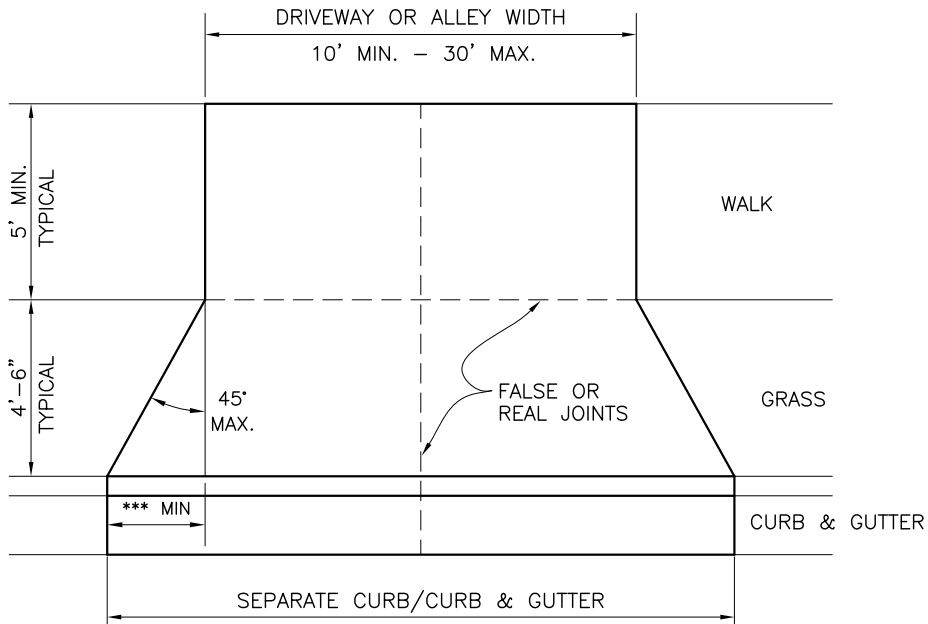
CITY OF SPRINGFIELD, OHIO
SERVICE DEPARTMENT

STANDARD NO. 2
CATCH BASIN

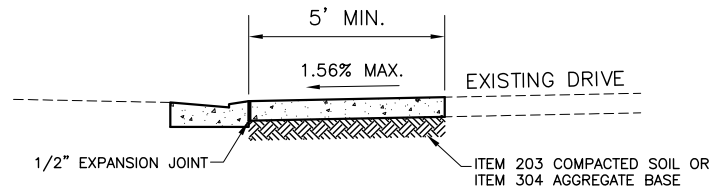
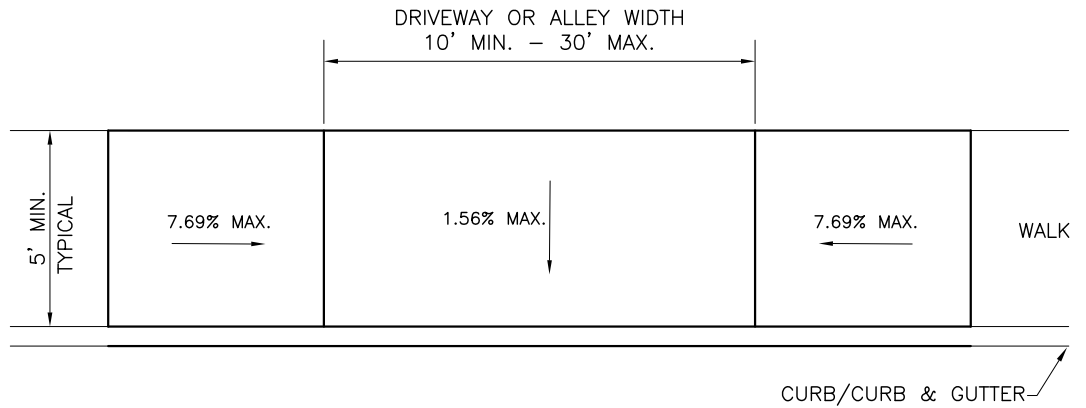
STANDARD DRAWING CB-2

APPROVED _____ CITY ENGINEER

DATE
JUL 98
NOV 03
JUN 21



PLAN



SECTION

NOTES:

CONDITIONS WHICH MAY WARRANT VARIATIONS FROM THESE SPECIFICATIONS MUST BE REVIEWED BY THE ENGINEER, AND CHANGES APPROVED BY THE ENGINEER.

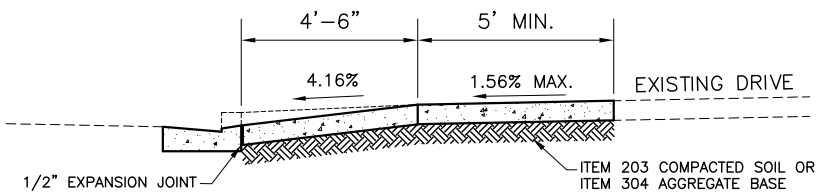
CONCRETE THICKNESS SHALL BE 6" FOR RESIDENTIAL DRIVES AND 8" FOR COMMERCIAL DRIVES AND ALLEYS.

SPACING OF FALSE OR REAL JOINTS NOT TO EXCEED 5 FEET.

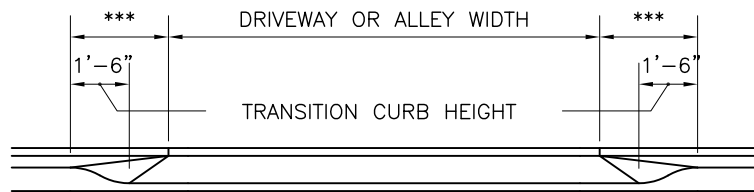
EXPANSION JOINTS SHALL BE PLACED AS PER ITEM 608.03

CURB AND GUTTER MUST BE CONSTRUCTED SEPARATELY FROM THE WALK OR APRON AREA.

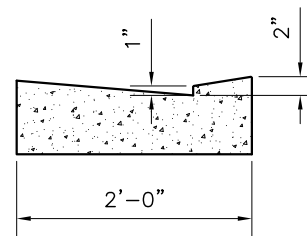
*** 5' ON ROADWAYS 35MPH SPEED LIMIT AND ABOVE, 2' FOR SPEED LIMITS LESS THAN 35MPH.



SECTION

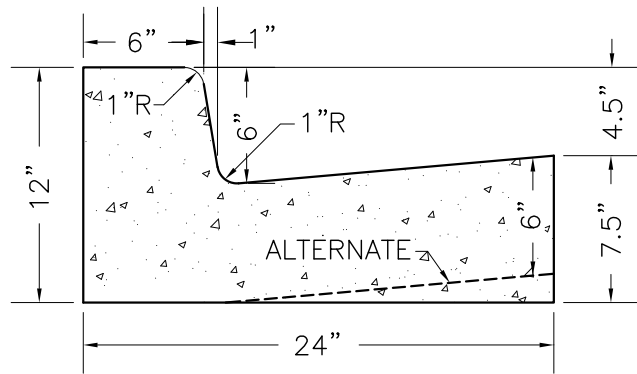


ELEVATION

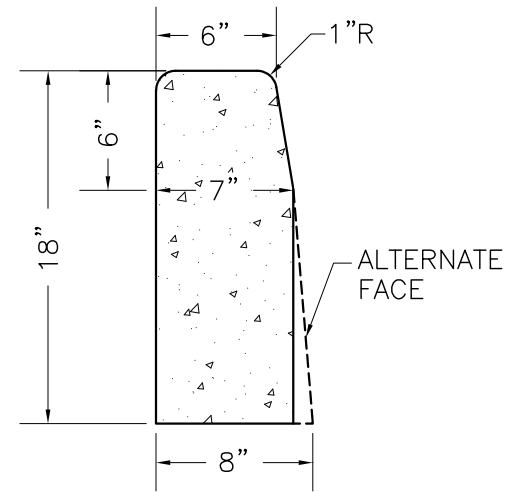


DROP CURB DETAIL

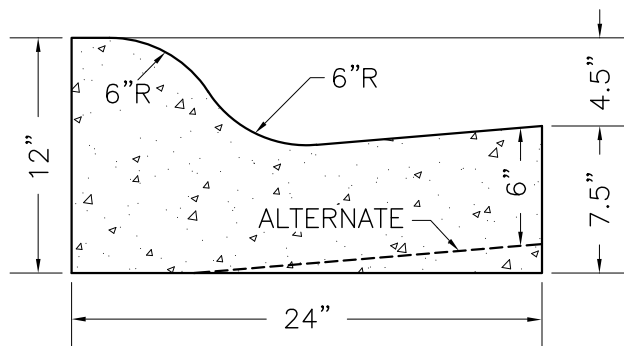
CITY OF SPRINGFIELD, OHIO SERVICE DEPARTMENT	
DRIVE AND ALLEY DETAIL	DATE JUL 98 JUN 21
STANDARD DRAWING DW-1	
APPROVED _____	CITY ENGINEER



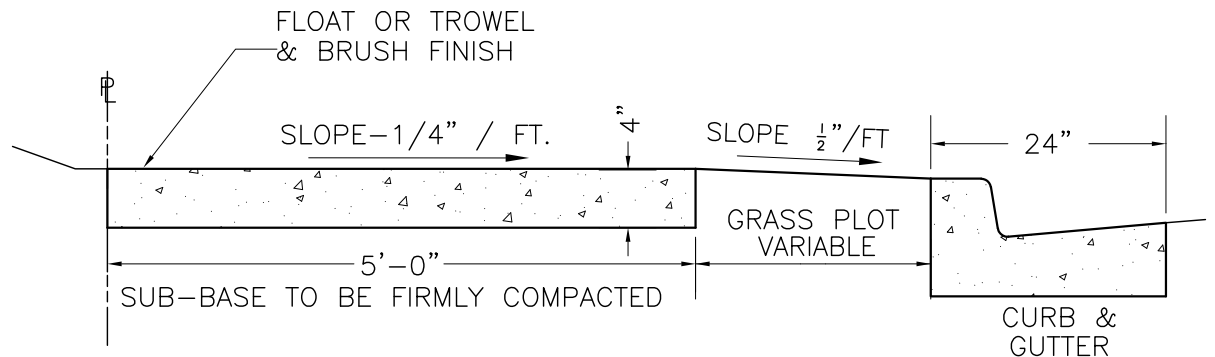
COMBINATION CURB & GUTTER
TYPE 'B'



CURB-TYPE 'A'

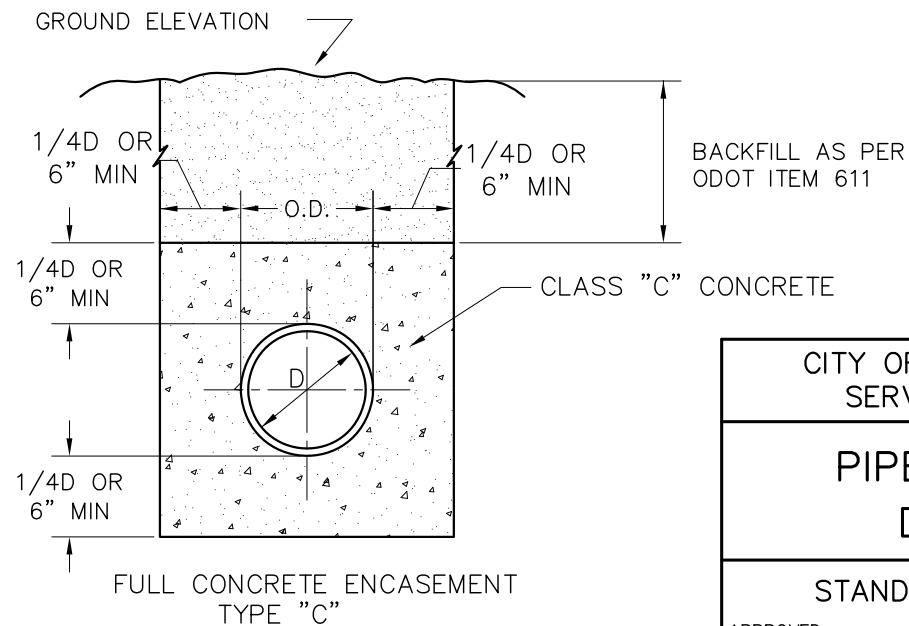
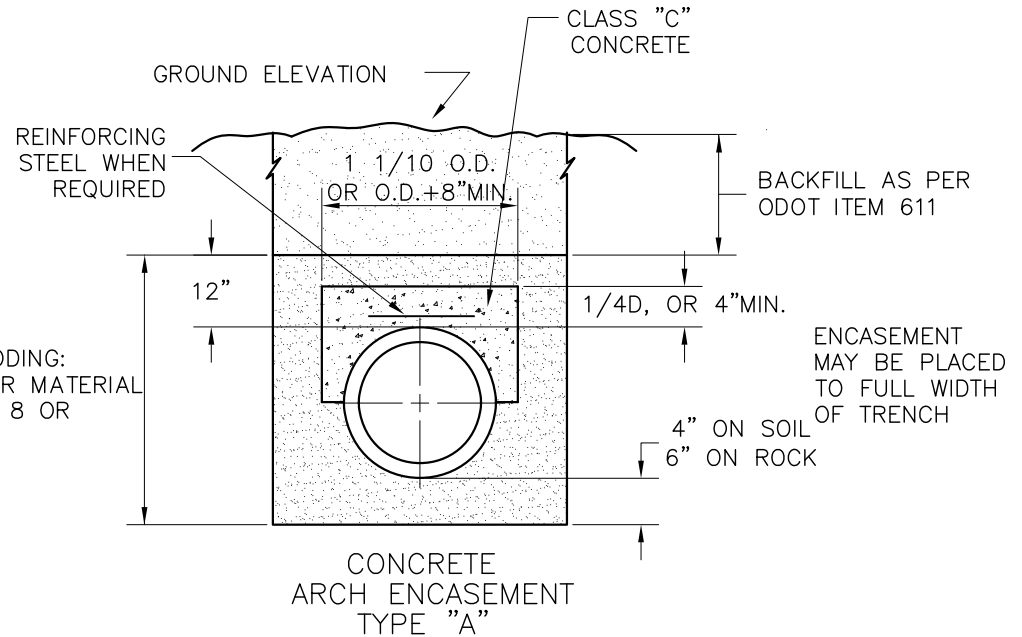
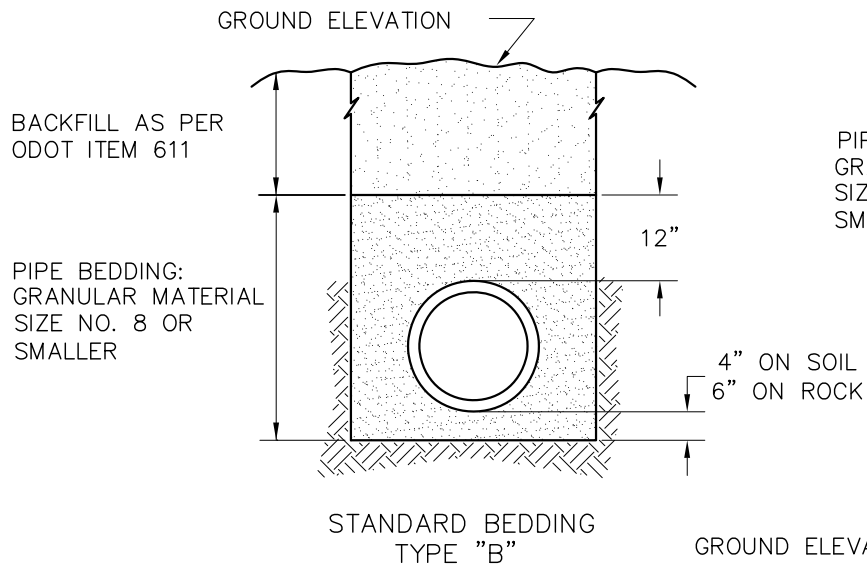


COMBINATION CURB & GUTTER
TYPE 'C'



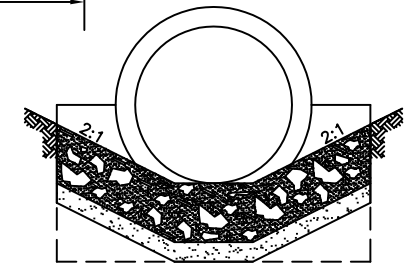
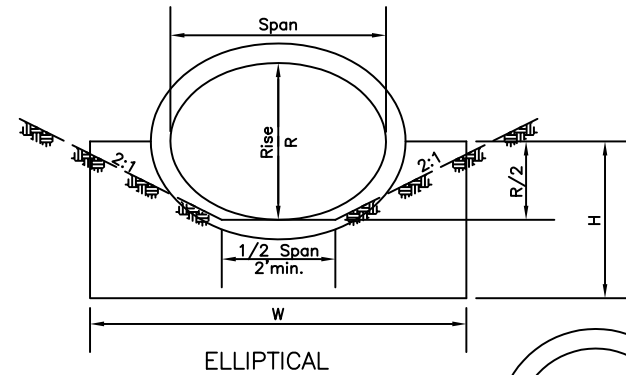
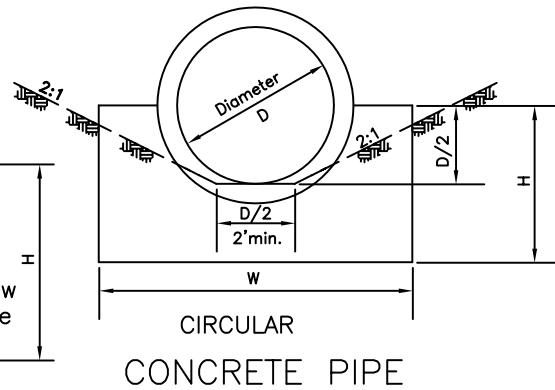
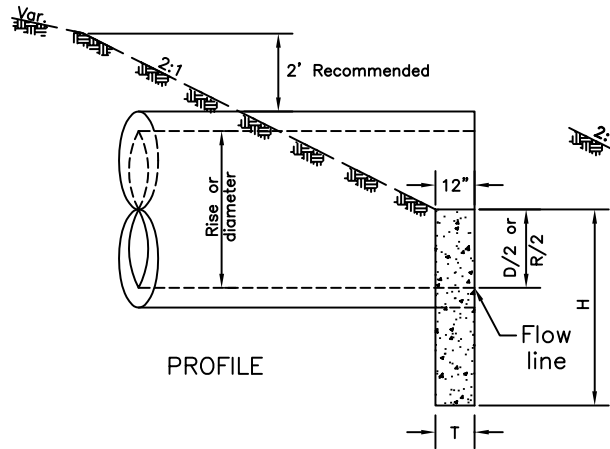
TYPICAL SECTION-SIDEWALK, CURB AND GUTTER

CITY OF SPRINGFIELD, OHIO SERVICE DEPARTMENT	
CURBING & WALK DETAILS	
STANDARD DRAWING CU-1	
APPROVED _____	DATE JUL 98 JUN 21 CITY ENGINEER



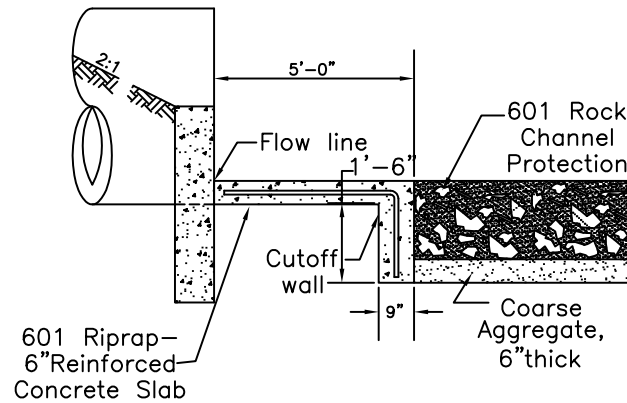
NOTE:
TYPE "B" BEDDING SHALL BE
USED UNLESS OTHERWISE NOTED
ON THE PLANS OR DIRECTED
BY THE ENGINEER.

CITY OF SPRINGFIELD, OHIO SERVICE DEPARTMENT	
PIPE BEDDING DETAILS	DATE JUL 98 JUN 21
STANDARD DRAWING PB-1	
APPROVED _____	CITY ENGINEER



Width of protection shall equal width of headwall. Minimum width 4'-0".

HEADWALL FOR CONCRETE PIPE										
CIRCULAR					ELLIPTICAL					
D	W	H	T	CONCRETE CU.YDS.	Span	Rise	W	H	T	CONCRETE CU.YDS.
12"	2'-0"	3'-0"	12"	.20						
15"	2'-6"	3'-2"	12"	.25						
18"	3'-0"	3'-3"	12"	.31	23"	14"	3'-5"	3'-2"	12"	.33
21"	3'-6"	3'-4"	12"	.37						
24"	4'-0"	3'-6"	12"	.43	30"	19"	4'-2"	3'-4"	12"	.42
27"	4'-6"	3'-8"	12"	.49	34"	22"	4'-7"	3'-5"	12"	.46
30"	5'-0"	3'-9"	12"	.56	38"	24"	5'-0"	3'-6"	12"	.50
33"	5'-6"	3'-10"	12"	.62	42"	27"	5'-5"	3'-7"	12"	.55
36"	6'-0"	4'-0"	12"	.69	45"	29"	5'-10"	3'-8"	12"	.59
39"	6'-6"	4'-2"	12"	.77	49"	32"	6'-6"	3'-10"	12"	.67
42"	7'-0"	4'-3"	12"	.84	53"	34"	7'-2"	4'-0"	14"	.82
48"	8'-0"	4'-6"	14"	1.09	60"	38"	8'-5"	4'-2"	14"	1.01
54"	9'-3"	4'-9"	14"	1.32	68"	43"	9'-8"	4'-4"	16"	1.32
60"	10'-6"	5'-6"	16"	1.93	76"	48"	11'-0"	5'-0"	16"	1.79
66"	11'-9"	5'-9"	18"	2.42	83"	53"	12'-4"	5'-2"	18"	2.23
72"	13'-0"	6'-0"	18"	2.77	91"	58"	13'-7"	5'-5"	18"	2.53
78"	14'-3"	6'-3"	20"	3.37	98"	63"	14'-10"	5'-7"	20"	3.07
84"	15'-6"	6'-6"	22"	4.05	106"	68"	16'-2"	5'-10"	20"	3.42
90"	16'-9"	6'-9"	22"	4.51	113"	72"	17'-6"	6'-0"	22"	4.05
96"	18'-0"	7'-0"	24"	5.31						
102"	19'-3"	7'-3"	26"	6.20						
108"	20'-6"	7'-6"	26"	6.78						
114"	21'-9"	7'-9"	28"	7.81						
120"	23'-0"	8'-0"	30"	8.93						



NOTES
CONCRETE for headwalls shall be Class C.

CITY OF SPRINGFIELD, OHIO DEPARTMENT OF ENGINEERING	
HEADWALL DETAIL	
DATE JUL 98	
STANDARD DRAWING HW-1	
APPROVED _____	CITY ENGINEER

FIRE HYDRANTS MANUFACTURERS SHALL BE KENNEDY K-81-A, DARLING B-84B, CLOW MEDALLION OR MUELLER CENTURION

NOTE: TRACE WIRE TO BE INSTALLED ON TOP OF PIPE AND TIED TO PIPE EVERY 5 FEET WITH TAPE OR WIRE TIES. INSTALL TRACE WIRE ON EAST OR NORTH SIDE OF VALVES OR FIRE HYDRANT.

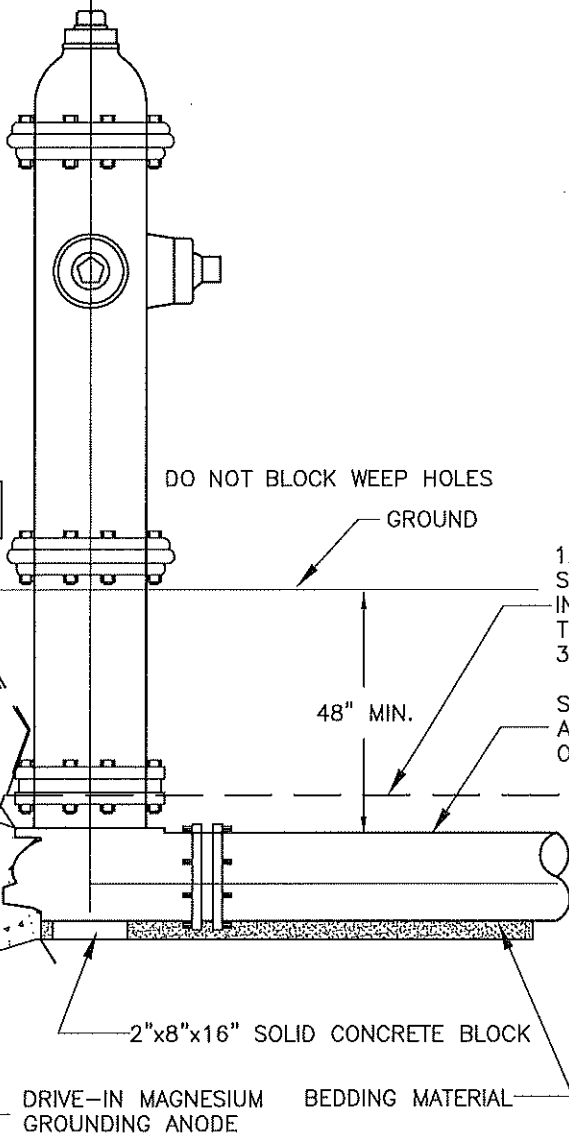
ACCESS POINT
COBRAHEAD TS-B-FLPKG OR APPROVED EQUAL

1" PVC CONDUIT

WATERPROOF MEMBRANE

CONCRETE BLOCKING
AS PER STD DWG WB-1
OR RESTRAINED JOINTS
AS PER 838

UNDISTURBED EARTH



DO NOT BLOCK WEEP HOLES

GROUND

48" MIN.

12 AWG SOLID COPPER
STEEL WIRE BLUE
INSULATION PER 842 CONNECTED
TO MAINLINE TRACE WITH
3-WAY CONNECTOR

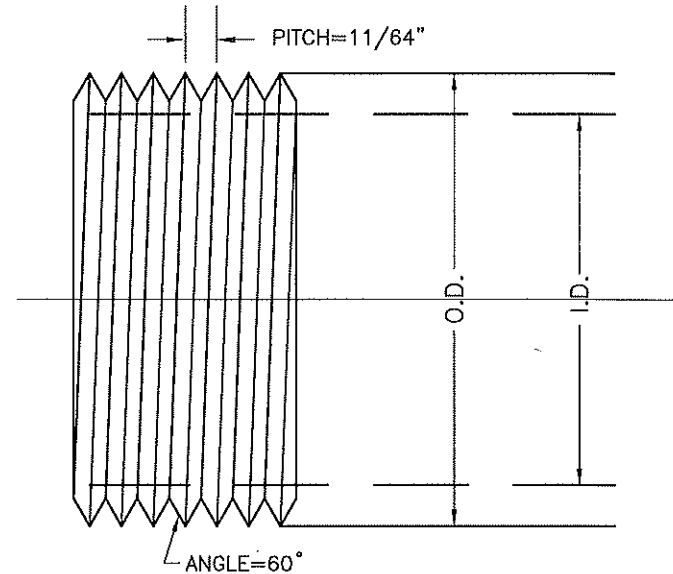
SUPPLY PIPE
AS SHOWN
ON PLANS

RESTRAIN VALVE
FROM HYDRANT TO
MAIN LINE

2"x8"x16" SOLID CONCRETE BLOCK

DRIVE-IN MAGNESIUM
GROUNDING ANODE

BEDDING MATERIAL



HYDRANT NOZZLE
DETAIL

NOMINAL NOZZLE SIZE	O.D.	I.D.
4" NOZZLE	4.875"	4.0"
2 1/2" NOZZLE	3.250"	2.5"

NOTE:
HIGBEE CUT, SHARP V,
6 THREADS PER INCH

CITY OF SPRINGFIELD, OHIO
SERVICE DEPARTMENT

FIRE HYDRANT
DETAIL

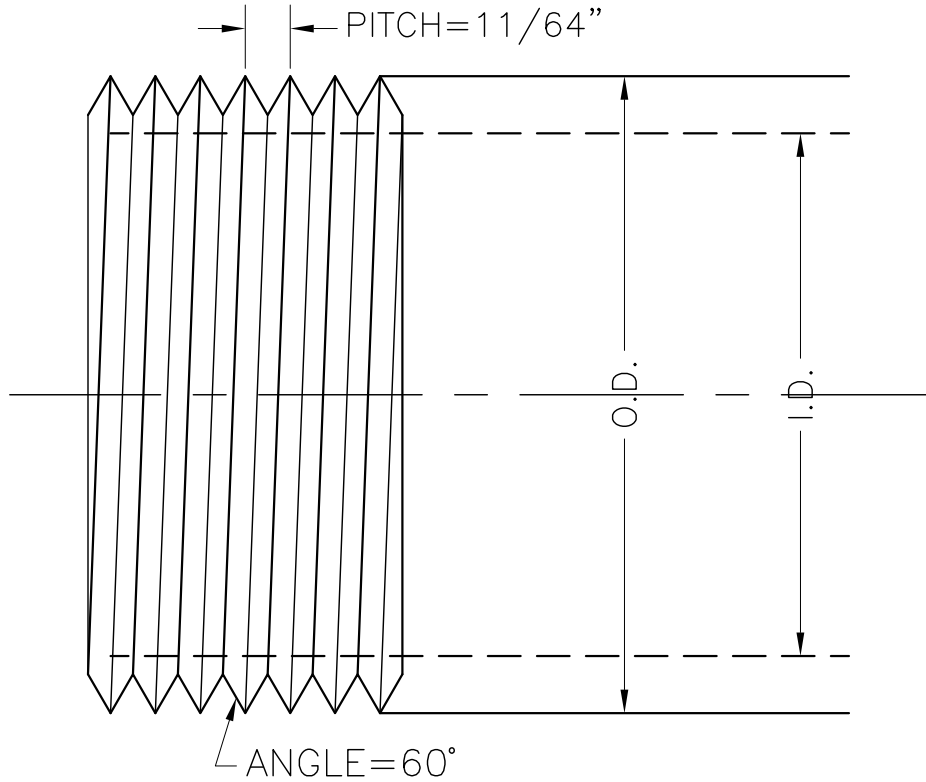
DATE
JUL 98
JUN 21
APR 23
JUN 23

STANDARD DRAWING FH-1

APPROVED

CITY ENGINEER

102



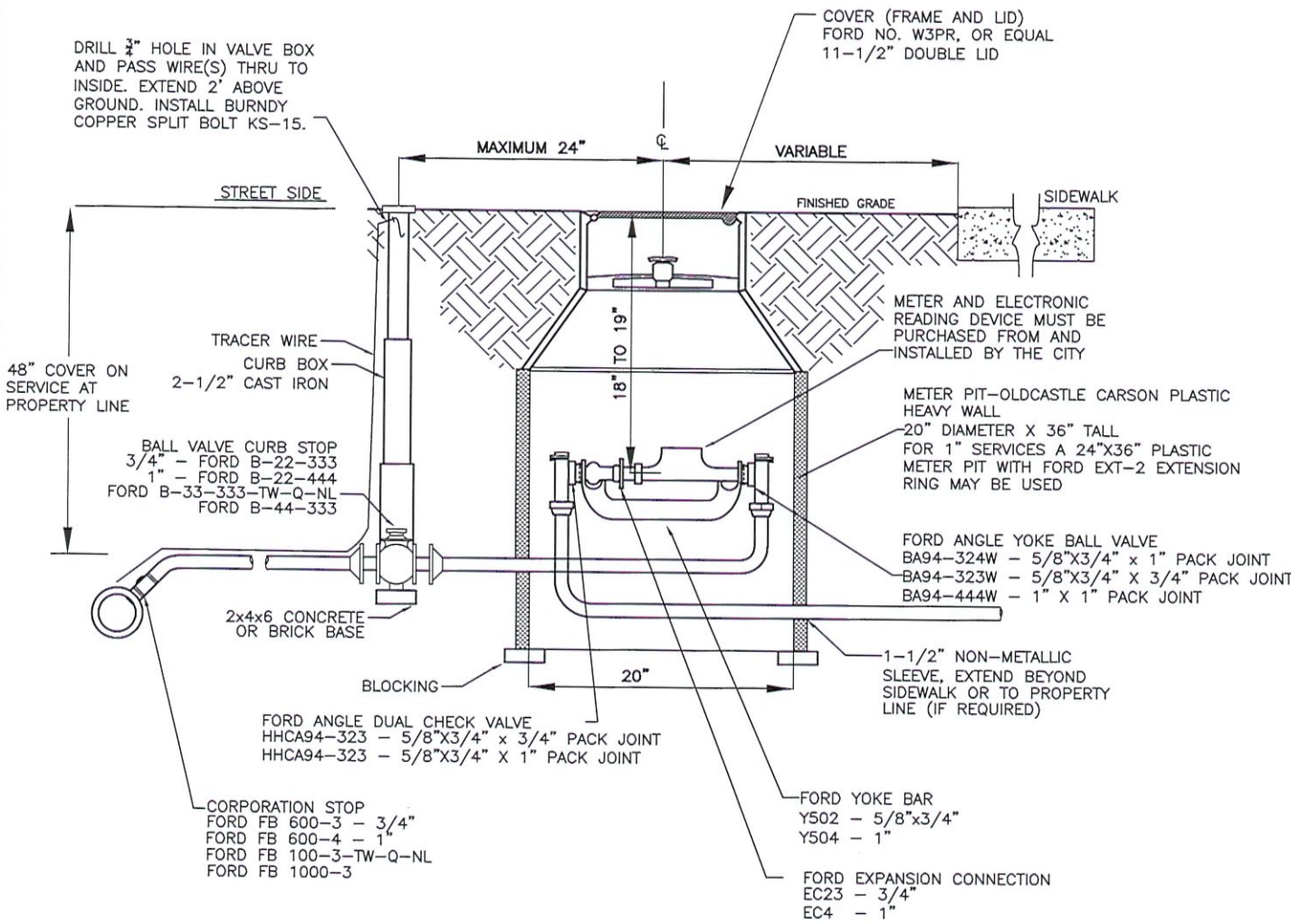
NOMINAL NOZZLE SIZE	O.D.	I.D.
4" NOZZLE	4.875"	4.0"
2 1/2" NOZZLE	3.250"	2.5"

NOTE:
 HIGBEE CUT, SHARP V,
 6 THREADS PER INCH

CITY OF SPRINGFIELD, OHIO SERVICE DEPARTMENT	
HYDRANT NOZZLE THREADS	DATE JUL 98 JUN 21
STANDARD DRAWING HN-1	
APPROVED _____	CITY ENGINEER

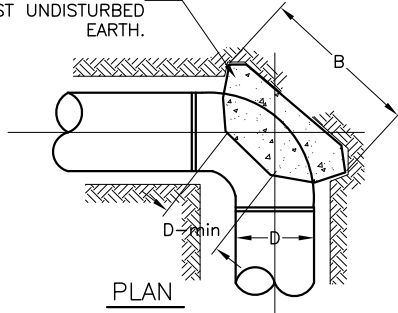
NOTES:

1. CURB STOP, CURB BOX AND METER PIT SHALL BE LOCATED BETWEEN THE CURB AND SIDEWALK. THEY SHALL NOT BE LOCATED IN A DRIVEWAY.
2. WATER METER SERVICE FEE MUST BE PAID BEFORE METER WILL BE INSTALLED.
3. WATER METER SETTING MUST BE PROPERLY INSTALLED AND FINAL PLUMBING INSPECTION COMPLETED BEFORE METER WILL BE INSTALLED AND SERVICE TURNED ON.
4. PLANS FOR LARGER THAN 1" SERVICES MUST BE SUBMITTED FOR APPROVAL.
5. ANY MCDONALD PARTS EQUAL TO FORD MAY BE SUBSTITUTED.
6. #12 AWG INSULATED TRACER WIRE BLUE IN COLOR SHALL BE LAID ALONG SERVICE LINE FROM CORPORATION STOP TO CURB STOP AND TO THE TOP OF THE VALVE BOX USING COPPERHEAD INDUSTRIES, SOLID COPPER-1230 OR EQUAL. CONNECTIONS SHALL USE A BURNDY COPPER SPLIT BOLT KS15 AND THOROUGHLY WRAP WITH 3M TOMFLEX 2155 RUBBER SLICING TAP. COVER WITH SUPER88 HEAVY DUTY ELECTRICAL TAP.
7. TRACER WIRE SHALL BE ATTACHED TO THE NEW CURB STOP FOR WATER SERVICE ONLY INSTALLATION. IF NEW WATERLINE IS INSTALLED, TRACER WIRE SHALL BE CONNECTED TO THE TRACER WIRE ABOVE THE WATERLINE BY USE OF A BURNDY COPPERSPLIT BOLT KS-15 AS ITEM 842 TRACER WIRE.
8. IF PLASTIC WATER SERVICE IS INSTALLED THE FOLLOWING APPLIES:
 - A) FRONT AND BACK RISERS WILL BE ABLE TO BE CROSSED.



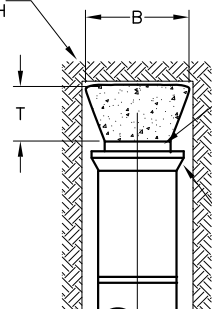
CITY OF SPRINGFIELD, OHIO SERVICE DEPARTMENT	
PROPERTY SERVICE WITH METER	DATE APR 2019 JUN 2021 NOV 2022 JUNE 2023 NOV 2023
STANDARD DRAWING WM-1	
APPROVED _____	CITY ENGINEER

CLASS C CONCRETE
REACTION BLOCKING
AGAINST UNDISTURBED
EARTH.



PLAN

UNDISTURBED
EARTH

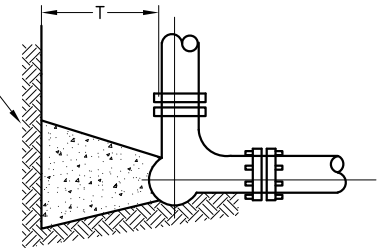


PLAN

PLUG

WRAP END WITH
TAR PAPER OR
POLYETHELENE

UNDISTURBED
EARTH



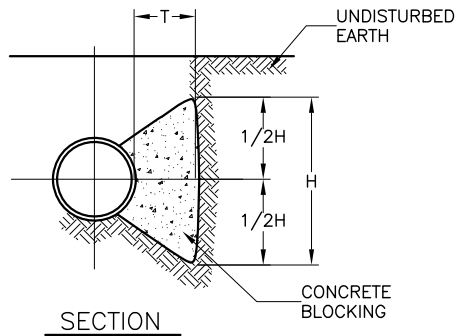
FIRE HYDRANT FOOT

THE DIMENSIONS SHOWN ARE MINIMUM REQUIREMENTS. CONDITIONS MAY REQUIRE THAT CONCRETE BLOCKING BE EXTENDED TO MAKE PROPER CONTACT WITH UNDISTURBED EARTH.

ALL JOINTS SHALL REMAIN ACCESSIBLE FOR REPAIRS.

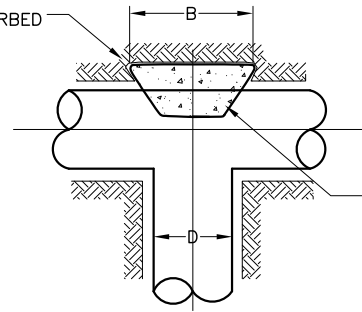
RESTRAINED JOINT PIPE MAY BE USED AS AN ALTERNATE TO CONCRETE BLOCKING.

TWO LAYERS OF VISQUEEN SHALL BE PLACED AROUND ALL JOINTS AND HARDWARE PRIOR TO PLACING THE CONCRETE BLOCKING.



SECTION

UNDISTURBED
EARTH



PLAN

CONCRETE
BLOCKING

REACTION BLOCKING TABLE

SIZE (D)	BEND OR FITTING	B X H	T
6"	OUTLET, TEE, ALL BENDS, PLUG	2.5' X 2.5'	1.00'
8"	OUTLET, TEE, ALL BENDS, PLUG	3.5' X 3.5'	1.00'
12"	OUTLET, TEE, ALL BENDS, PLUG	4.5' X 4.5'	1.00'
16"	OUTLET, TEE, ALL BENDS, PLUG	5.5' X 5.5'	1.00'
24"	OUTLET, TEE, ALL BENDS, PLUG	7.25' X 7.25'	1.25'
30"	OUTLET, TEE, ALL BENDS, PLUG	8.5' X 8.5'	2.00'

CITY OF SPRINGFIELD, OHIO
SERVICE DEPARTMENT

WATER LINE BLOCKING
DETAILS

DATE
JUL 98
JUN 21

STANDARD DRAWING WB-1

APPROVED

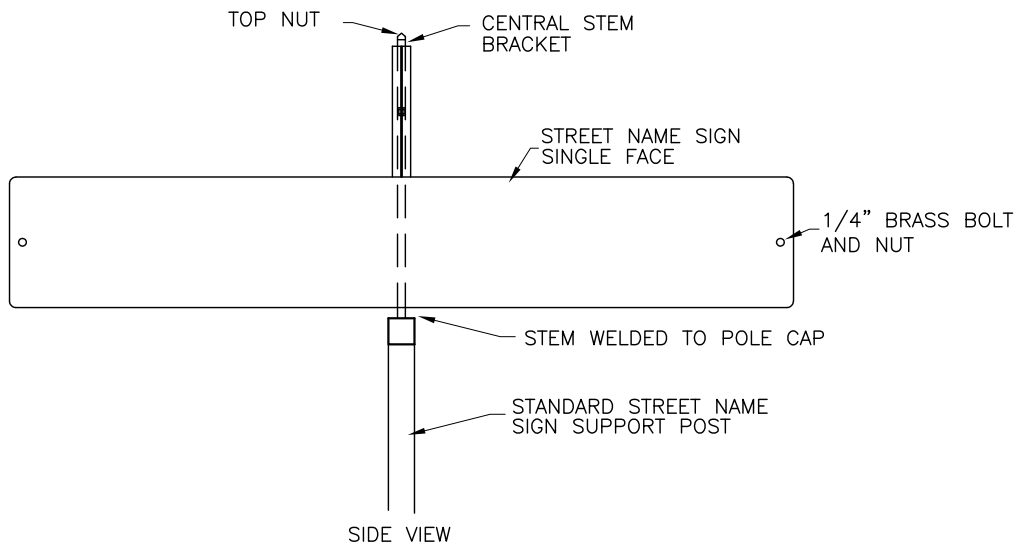
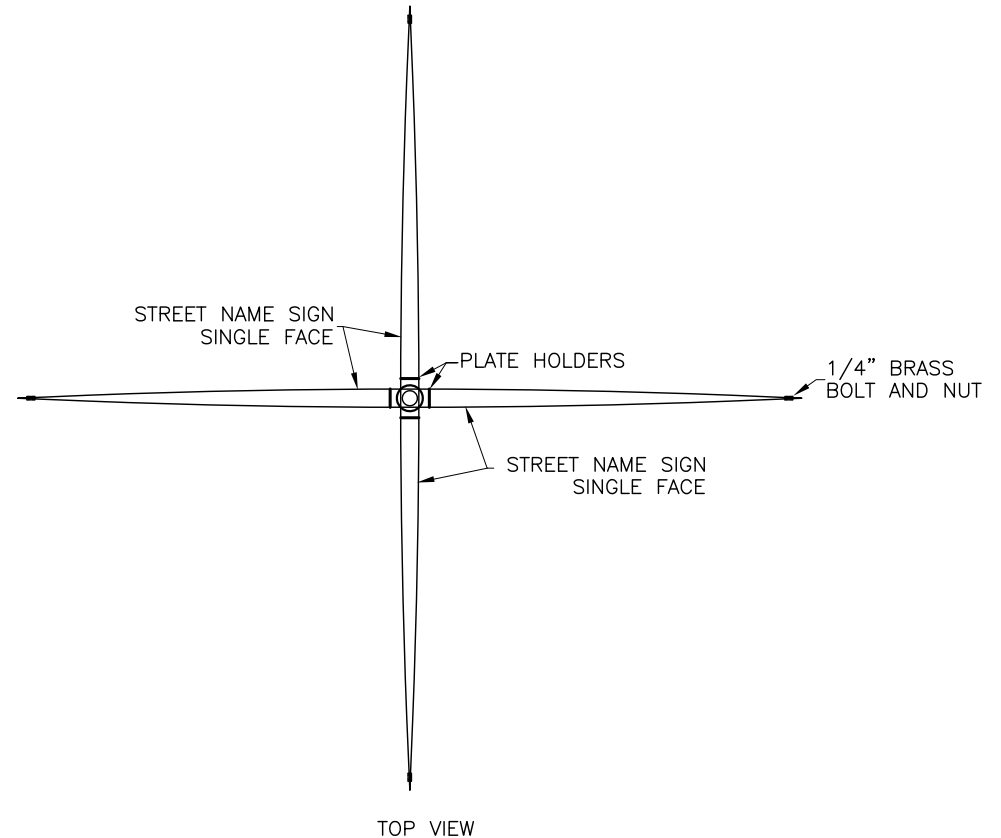
CITY ENGINEER

ITEM 630 SIGNING MISC.: STREET NAME SIGN, SINGLE FACE

1. STREET NAME SIGNS SHALL BE FLAT SHEET PANELS 9" HIGH BY A VARIABLE WIDTH DETERMINED BY THE LEGEND ON THAT SIGN. CONSTRUCTION SHALL BE PER ITEM 630 SIGNS, FLAT SHEET WITH TYPE "J" SHEETING.
2. THE SIGN SHALL BE MOUNTED ON THE CENTRAL STEM SIGN BRACKET AND ATTACHED AT EACH END TO THE MATCHING SIGN MOUNTED ON THE OPPOSITE SIDE OF THE STEM WITH A 0.25" BRASS BOLT AS PER 730.17.
3. STREET NAME SIGNS SHALL BE FABRICATED WITH 6" LETTERS AND NO BORDER.

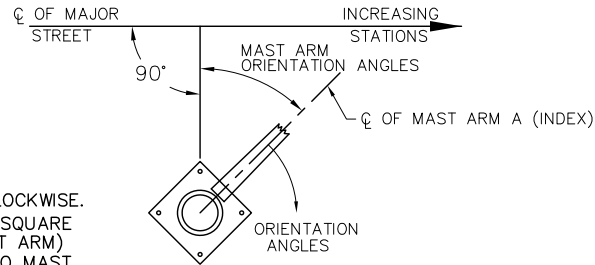
ITEM 630 STREET NAME SIGN SUPPORT

1. THE SUPPORT SHALL INCLUDE A CENTRAL STEM TYPE STREET NAME SIGN BRACKET (FOR 4-WAY INSTALLATION) WITH THE APPROPRIATE TOP NUT AND PLATE HOLDERS TO MOUNT FOUR (4) SINGLE SIDED STREET NAME SIGNS AND SHALL BE LYLE SIGNS INC. E-450 SERIES BRACKET. THE BRACKET SHALL BE BLACK.
2. LOCATIONS REQUIRING 6 SIGNS AND THEREFORE A LONGER CENTRAL STEM ARE SHOWN ON THE PLAN.



CITY OF SPRINGFIELD, OHIO SERVICE DEPARTMENT	
STREET NAME SIGN DETAIL	DATE JUL 98 JAN 03 JUN 21
STANDARD DRAWING SN-1	
APPROVED _____ CITY ENGINEER	

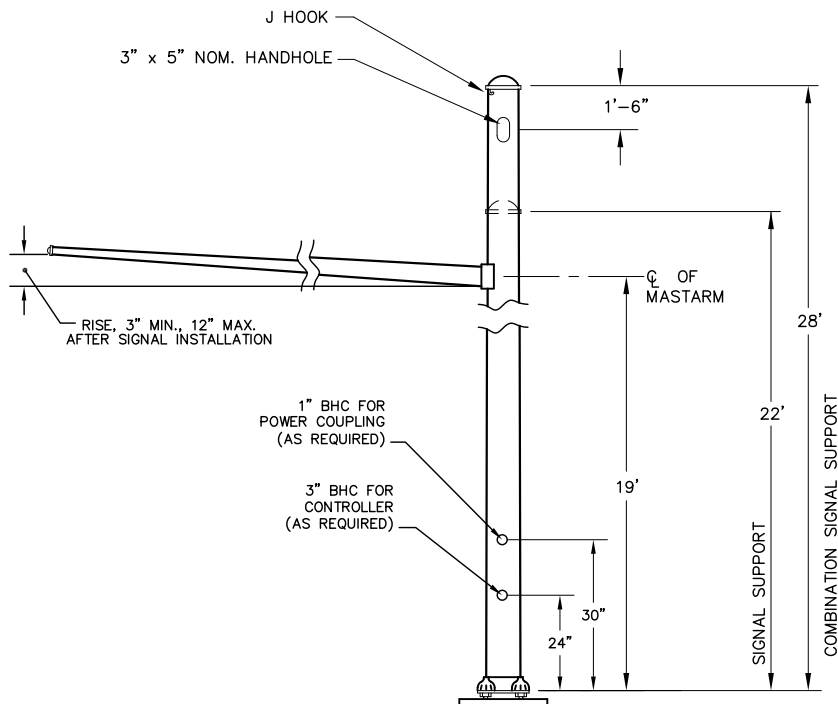
**MAST ARM ORIENTATION
REFERENCE DIAGRAM**



NOTES:

1. ALL ANGLES MEASURED CLOCKWISE.
2. BASE PLATE IS ORIENTED SQUARE TO MAST ARM A (LARGEST ARM) EVEN IF SUPPORT HAS TWO MAST ARMS.

SIGNAL SUPPORT DETAIL



SPECIAL NOTES

I. COMBINATION SUPPORTS

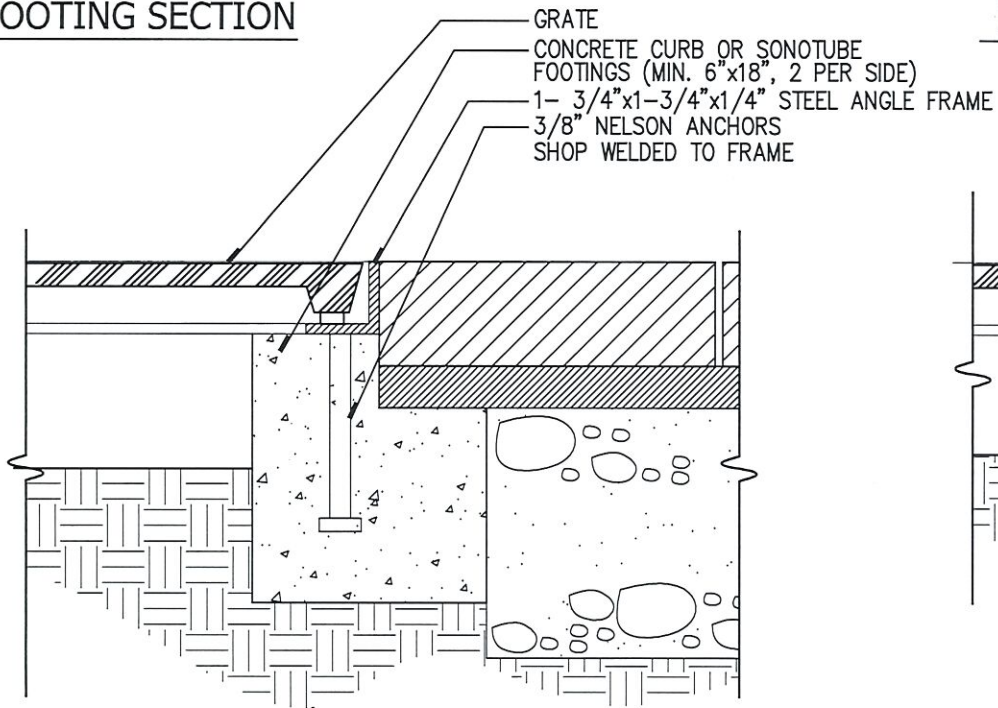
- A. CENTER OF 3"x5" HANDHOLE IS LOCATED 18" FROM TOP OF POLE

II. ALL SUPPORTS

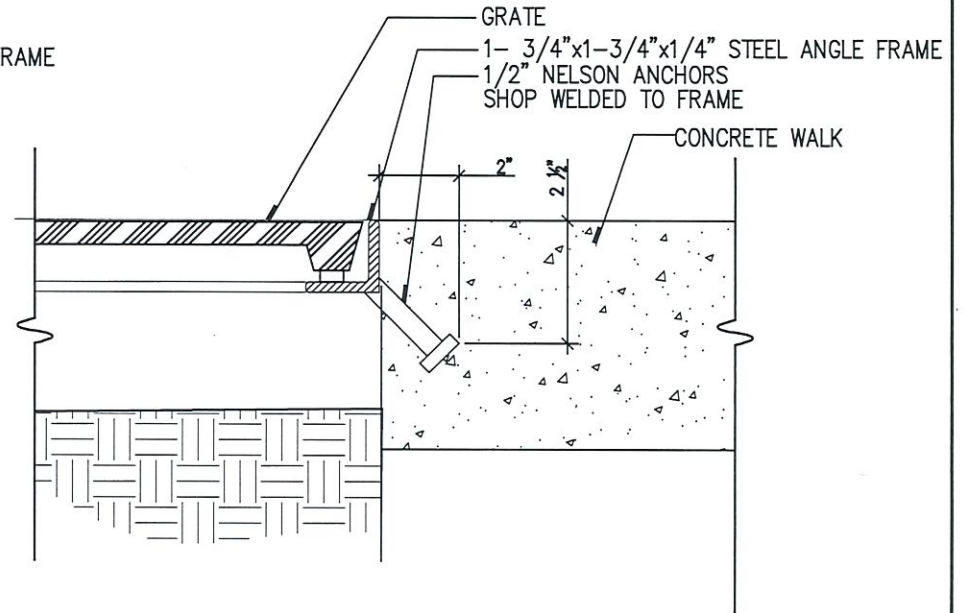
- A. BOTTOM OF SIGNAL HEADS SHALL BE 17' TO 19' ABOVE ROADWAY SURFACE AND RIGID MOUNTED WITH PELCO APPROVED BRACKET.
- B. TOP ELEVATIONS OF POLE FOUNDATION SHALL BE AT A HEIGHT SUFFICIENT TO ALLOW FOR DESIGN CLEARANCES AS NOTED FOR SIGNAL HEADS MOUNT ON MAST ARMS.
 - 1) THIS REQUIREMENT SHALL NOT SUPERCEDE PARAGRAPH 1 OF THIS REQUIREMENT AS IT PERTAINS TO SIGNAL HEIGHT STANDARDS.
- C. PEDESTRIAN SIGNAL BLIND HALF COUPLINGS SHALL BE DRILLED 20 INCHES CENTER TO CENTER IN A VERTICAL STRAIGHT LINE, WITH THE LOWER COUPLING 9 FEET FROM THE BOTTOM OF THE POLE BASE.
- D. ALL SIGNAL SUPPORTS AND MAST ARMS SHALL HAVE A BLACK POWDER COAT FINISH AS PER PROVISIONS OF ITEM 916, IN LIEU OF GALVANIZING.
- E. CONTACT OHIO EDISON ENGINEERING 937-327-1235 FOR POWER HOOK CONNECTION.

CITY OF SPRINGFIELD, OHIO SERVICE DEPARTMENT	
SIGNAL SUPPORT DETAIL	DATE JUL 98 APR 03 JUN 21
STANDARD DRAWING SS-1	
APPROVED _____	CITY ENGINEER

**BRICK SURFACE
FOOTING SECTION**



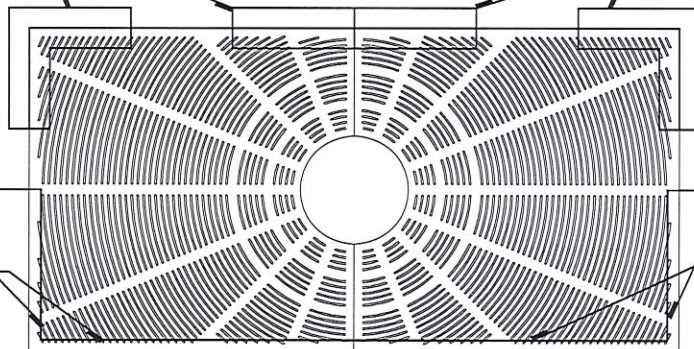
**CONCRETE SURFACE
FOOTING SECTION**



CONCRETE CURB OR
SONOTUBE FOOTING

CONCRETE CURB OR SONOTUBE
FOOTING

STEEL ANGLE FRAME



BRICK SURFACE

CONCRETE SURFACE

STEEL ANGLE FRAME

PLAN

CITY OF SPRINGFIELD, OHIO
SERVICE DEPARTMENT

**TREE GRATE
DETAIL**

DATE
SEPT 04
JUN 21

STANDARD DRAWING TG-1

APPROVED

CITY ENGINEER

CONCRETE CURB TYPE A OR
GRANITE CURB, 6"x15 1/4"

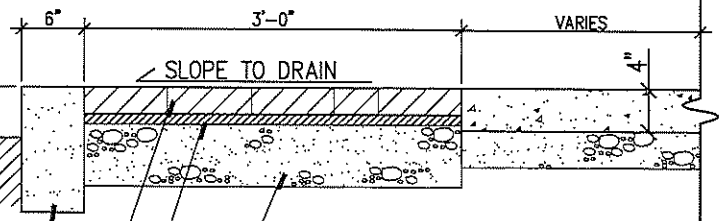
BRICK PAVERS
RUNNING BOND PATTERN

ADJACENT CONCRETE

6" 3'-0"
DESIGN A

PLAN

6" (UNLESS SPECIFIED OTHERWISE)



CONCRETE CURB TYPE A OR
GRANITE CURB, 6"x15 1/4"

BRICK PAVERS

1 1/2" #9 GRIT
VIBRATED INTO 6" OF 304 OR
9" OF 304 IN DRIVEWAYS

SUBGRADE

SECTION

CITY OF SPRINGFIELD, OHIO
SERVICE DEPARTMENT

CORE DISTRICT
SIDEWALK DETAIL

DATE
SEPT 04
DEC 08
JUN 21

STANDARD DRAWING SW-2

APPROVED _____ CITY ENGINEER

LIGHT FIXTURE AND POLE SCHEDULE		
DESCRIPTION	LAMPS	MOUNTING
ACORN STYLE STREET LIGHTING STANDARD MANUFACTURED BY STERNBERG. FIXTURE SHALL BE A850SR, WITH MODEL 5P FITTER AND 120/277V MULTI-TAP BALLAST. POLE SHALL BE MODEL FP, 5" DIAMETER STRAIGHT FLUTED, STRUCTURAL ALUMINUM WITH 0.188" MINIMUM WALL THICKNESS, WITH THE RICHMOND 3900 MODEL BASE. OPTIONAL ACCESSORIES SHALL INCLUDE DUAL 7/8" DIAMETER BANNER ARMS, BLACK FINISH OR DECORATIVE PLANTER ARM PA478, BLACK FINISH	XRLED 12L45T5-MDL21	POLE BASE

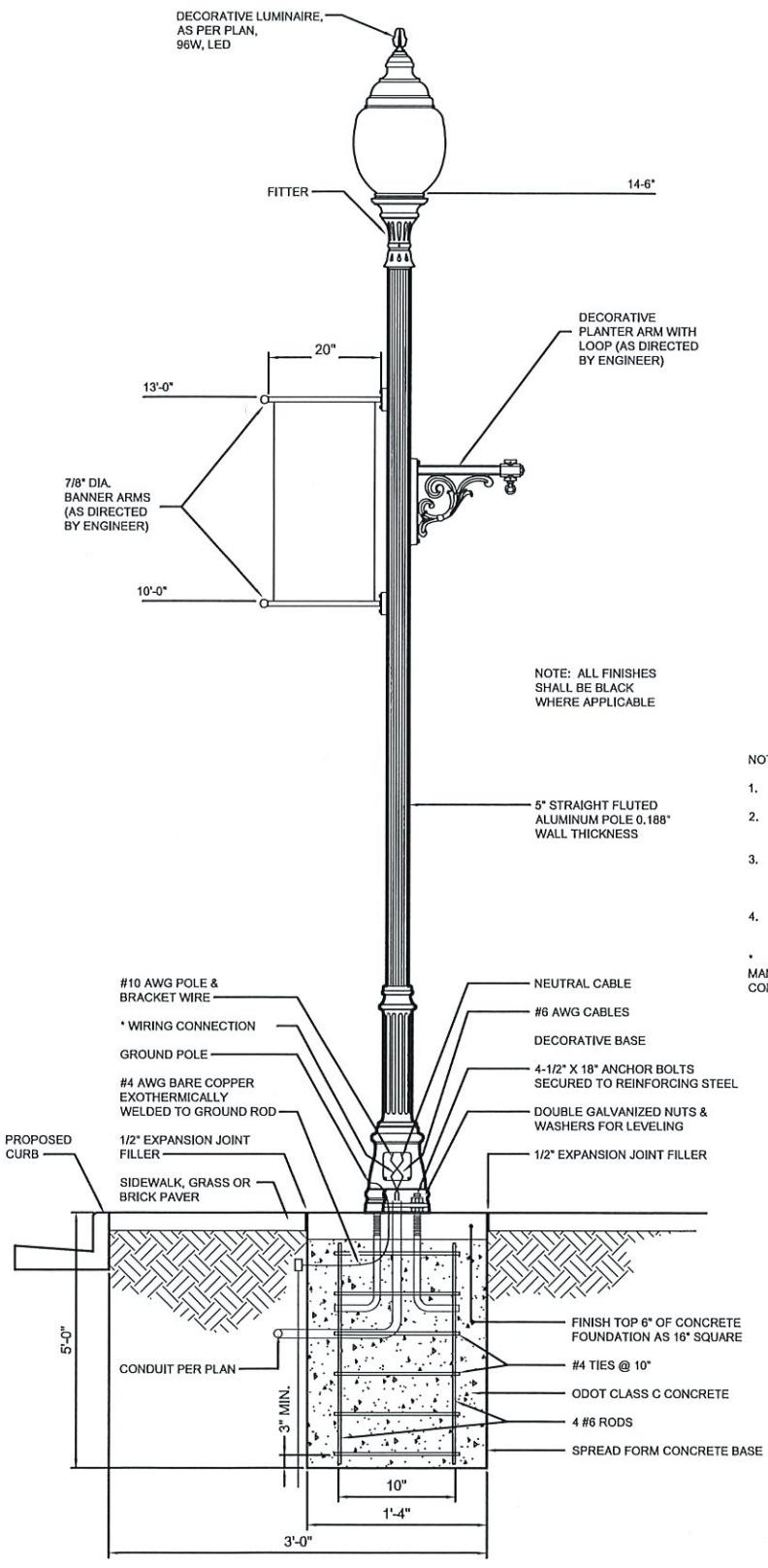
CITY OF SPRINGFIELD, OHIO
SERVICE DEPARTMENT

DATE
JUL 11
JAN 14
JUN 14
JUN 21

DECORATIVE STREET
LIGHT DETAIL

STANDARD DRAWING SL-1

APPROVED _____ CITY ENGINEER



NOTE: ALL FINISHES SHALL BE BLACK WHERE APPLICABLE

NOTES:

- 1 1/2" COVER REQUIRED OVER ALL REINFORCEMENT STEEL
 2. SLOPE TOP OF BASE AS NEEDED TO MATCH SLOPE OF SIDEWALK WHERE APPLICABLE
 3. THE CONTRACTOR SHALL USE EXTREME CARE WHEN EXCAVATING FOR THE LIGHT POLE FOUNDATIONS DUE TO THE PRESENCE OF UTILITIES IN THE AREA.
 4. CONTRACTOR SHALL COORDINATED WITH THE CITY ENGINEER FOR FINAL LIGHT POLE LOCATIONS.
- * CONNECTORS SHALL BE A SLK DISCONNECT FUSE KIT MANUFACTURED BY IDEAL INDUSTRIES, INC. OR APPROVED EQUAL. CONNECTORS SHALL BE:
 IN-LINE FUSED (HOT)- #30-S1212
 IN-LINE NONFUSED (NEUTRAL)- #30-S1212N
 Y-TAP FUSED (HOT)- #30-S2212
 Y-TAP NONFUSED (NEUTRAL)- #S2212N