



LEGACY 24

Uniting Our Community Strengthening Our Legacy
The City of Springfield Forward Together



WHAT IS LEGACY 24?

LEGACY 24 is our neighborhood collaborative movement committed to Empower, Engage, Enrich, and Enhance Springfield Neighborhoods.

Legacy 24 strives to create a brighter future for residents and future generations who will call our neighborhoods home.

Where neighbors find a sense of belonging and ownership.

Learning from the past, Living in the present, Building our future



OUR GOALS

➤ Empower

Inspire positive change and influence decisions that move neighborhoods Forward (Together).

➤ Engage

The intentional act of strengthening the voices and skills of residents, while creating a space to influence connections for neighbors.

➤ Enrich

Sharing knowledge and educating. Multi generational knowledge - Wisdom, Building Wealth (Forward)Together.

➤ Enhance

Improve the quality of life, value and identity in neighborhoods.



WHAT IS A LEGACY AREA?

A Legacy Area is an established area within the city limits, that has a distinctive character or identity.

Legacy Areas often contain a unique blend of Urban, Traditional and Suburban living, with a mix of historic homes, commercial and industrial buildings, transportation options, and local businesses.

They are culturally diverse and have an established sense of community.



Types of Areas

Urban Core

- Downtown Commercial Center of city
- It is historically significant, there is mix of land uses such as offices, restaurants and retail
- The traffic patterns follow slow speeds, there are one way streets and a majority of structures are more than 2 storeys high.
- More than 2-3 storey high

Example: Area around city hall and area along W Columbia stretch near Mercy Health



Urban Areas

- Adjacent to the core this area is a transitional buffer towards the more traditional neighborhoods of the city.
- It has a mix of commercial and office uses along with multifamily residential units.
- In the past it may have had a heavy presence of industry and manufacturing uses.

Examples: Area around the area along 72 or Limestone where rocking horse and global Stem academy are located





Types of Areas

Traditional Neighborhood

- Traditional in nature as there is legacy attached to them.
- Mix of housing- duplexes, multifamily, single family homes that the lots or have had garages in the backyard, accessed through alleyways.
- Close proximity to educational institutions and parks.
- Examples: Area around Evans stadium or Lincoln Elementary in south west quadrant of city.



Traditional Neighborhood Low Intensity

- Scattered pockets of developments.
- Residential subdivision here and there and a shopping mall or small scale offices nearby.
- Connected to parks and schools but generally are not within a walkable distance.



Examples: Area around N Bechtel Corridor stretch from Snyder Park to W First St.

Traditional Neighborhood High Intensity

- These were developing at the same time or during the same time as low intensity traditional neighborhoods.
- These areas have dense patterns of development and a high mix of residential and commercial land uses along with some manufacturing land uses.



Examples: Area around N Bechtel corridor stretch that has St Paris Pk, Northgate and Broadmoor.

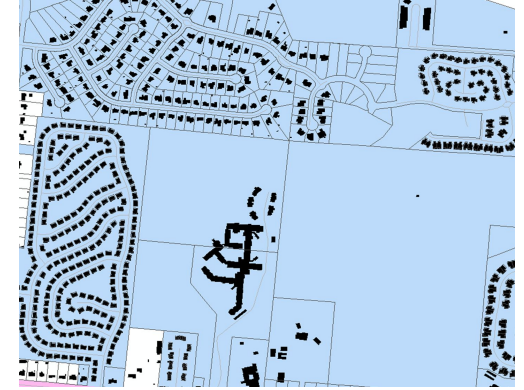


Types of Areas

Suburban Neighborhood

- Newer residential subdivisions, big box stores and cookie cutter patterns of parcels/lots having consistent housing pattern.
- Potential for future development and showcase elements of pragmatic planning techniques.
- Emphasis is given to vehicular connectivity.

Examples: Area around Kingsgate, middle urbana rd stretch near route 334 towards the north end of city



Suburban Neighborhood Low Intensity

- Sporadic development- residential and nonresidential.
- Lucrative sites and opportunities for future growth.
- Agricultural land and agriculture based activities, open fields.

Examples: Area around Masonic Homes at intersection of route 68 and 4 towards the west end of city

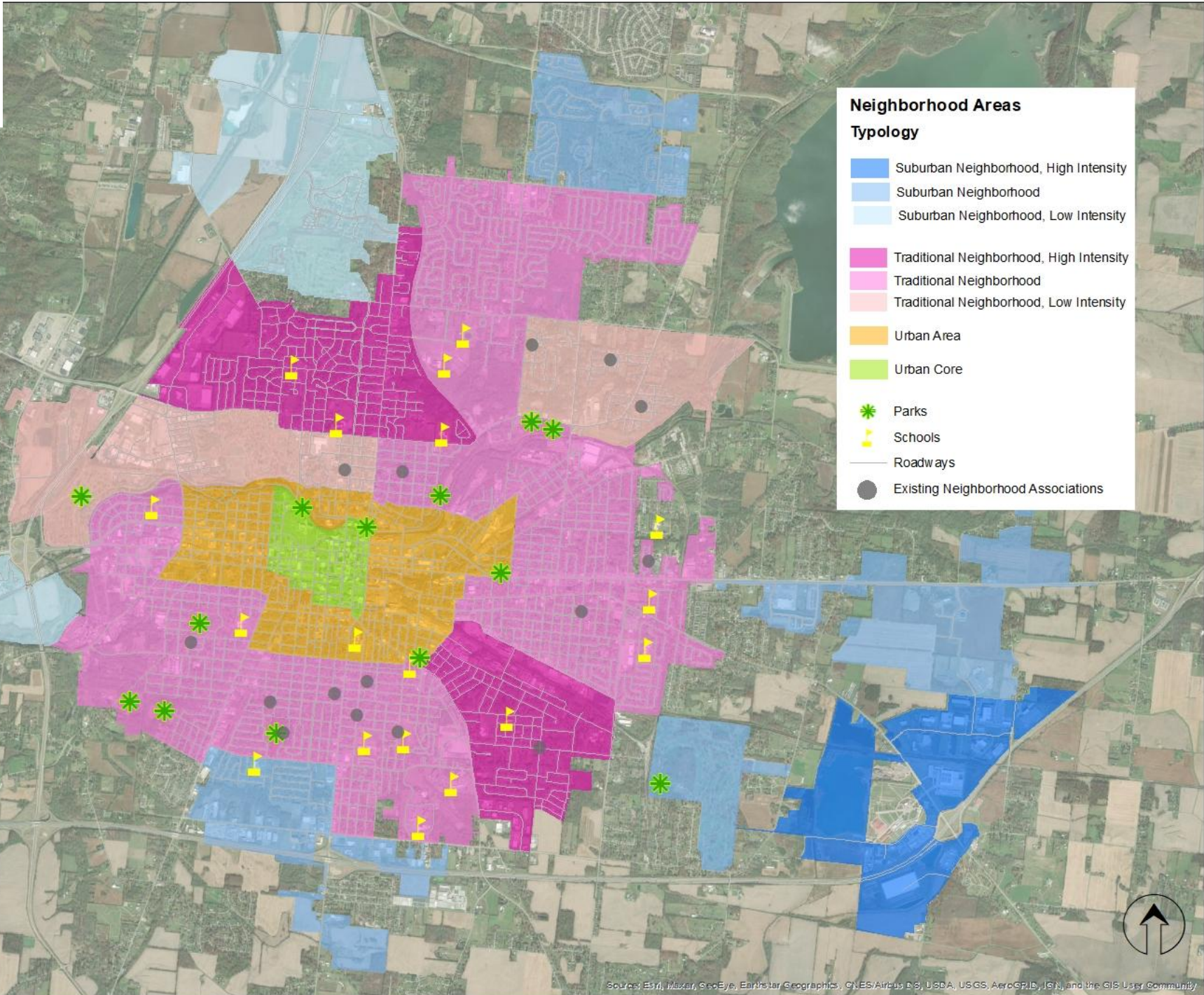


Suburban Neighborhood High Intensity

- Low residential developments and are focused on manufacturing.
- Consist of Manufacturing uses and industrial parks.
- Have potential for research development institutions, office/retail spaces to support any uses present and demand access from major thoroughfares such as interstate 70
- Designed to handle large amounts of commercial traffic.

Examples: Area around Gateway Blvd, where Prime Ohio I and II are located







NEIGHBORHOOD INFLUENCERS



A collective group of residents that live within the City of Springfield that have a heart for thriving, safe and healthy neighborhoods. This group works alongside the Community Development Neighborhood Impact Division to influence the work in the areas of Neighborhood Investment, Engagement, Resources, Community Building and Support for resident-led activities.

Neighborhood influencers also work to connect people within neighborhoods, residents and government – bringing the talents, resources and skills of people in a neighborhood together, increasing their collective capacity.



IMPACT INITIATIVES

Impact Initiatives aim to empower neighbors and build social connectivity through community-led projects. By providing a platform for neighbors, schools, and organizations to create and implement projects, we can empower individuals to take an active role in improving their neighborhoods. Creating space where you want to spend time, interact with neighbors, and participate in rebuilding the social landscape of neighborhoods.

● Events

- Neighborhood Clean-Ups: Legacy Truck/Trailer
- Neighborhood Celebrations/ Block Parties
- Neighborhood Summit
- Connecting with Commission
- Community Meetings

● Beautification

- Community Gardens/ Landscaping
- Signage/ Pole Banners
- Park Renovations
- Vacant Lots

● Engagement

- Neighbor Connection
- Neighborhood Newsletters
- Springfield Stories





Legacy 24 School Based Neighborhood Leadership Initiative

Legacy Club is a student-led club within the Springfield City Schools. This club encourages students to take initiative and develop their leadership skills. It also provides a platform for students to effectively communicate their ideas and collaborate with different departments of the city and community organizations in order to make a meaningful impact in their community.

A selective group of students at each school will work to come up with a project that can be done within their identified area. The class will work on a proposal and present their project ideas to Community Development Neighborhood Impact staff, Neighborhood Influencers and City leaders. Once the project is selected, city staff, influencers and students will work together to implement the project. Students will also learn the ins and outs of working with the city government. Schools will rotate each year.

Categories- (not limited to)

- Neighborhood Engagement
- Beautification
- Health and Safety

23-24 School Year

Lagonda and Fulton
Schaefer and Hayward
Springfield High and SOI



**How do you see yourself or
your organization
being a part?**

Uniting Our Community Strengthening Our Legacy
The City of Springfield Forward Together