

Aircraft Hangars

After completion of a substantial portion of the Springfield Beckley Municipal Airport Master Plan, the Airport Sponsor demolished and replaced numerous aircraft hangars. The exhibits in the master plan and the existing Airport Layout Plan sheet were not updated so as to reflect the conditions and recommendations made during the preparation of the master plan report. The future Airport Layout Plan sheet does depict the locations for the new hangars.

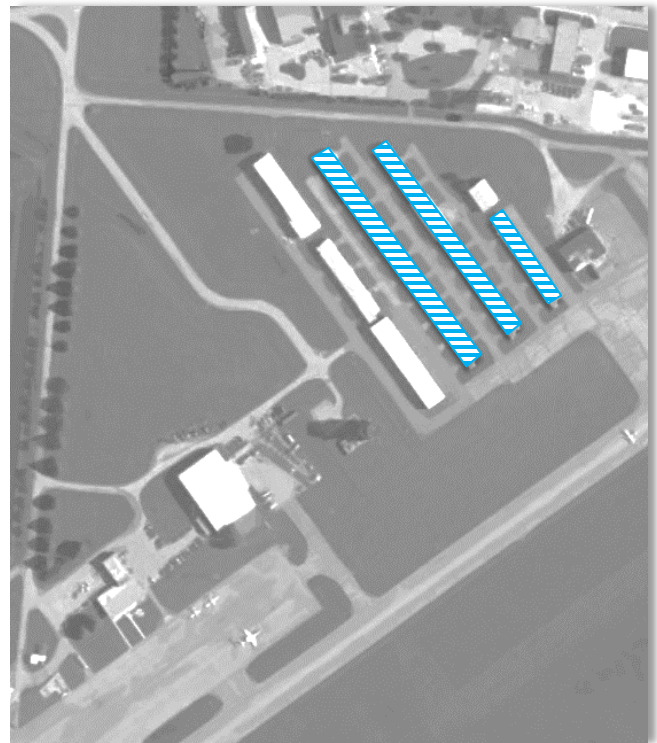
Hangars Removed

Row	Units
T-Hangar Row C	C - 201
	C - 202
	C - 203
	C - 204
	C - 205
	C - 206
	C - 207
	C - 208
T-Hangar Row D	D - 201
	D - 202
	D - 203
	D - 204
	D - 205
	D - 206
	D - 207
	D - 208
T-Hangar Row E	E - 201
	E - 202
	E - 203
	E - 204
	E - 205
	E - 206
	E - 207
	E - 208

Hangars Added

Row	Units	
T-Hangar Row S	S - 403	
	S - 404	
	S - 405	
	S - 406	
	S - 407	
	S - 408	
	Box Hangar Row S	S - 415
	Continued	S - 416
	S - 417	
	S - 418	

Location of Hangars



Hangars Removed



Source: Woolpert, 2016.

Hangars Added



Source: SGH Airport Director, 2020.