



# 2024 City of Springfield Community Survey GIS Maps

Presented to the City of  
Springfield, OH

November 2024



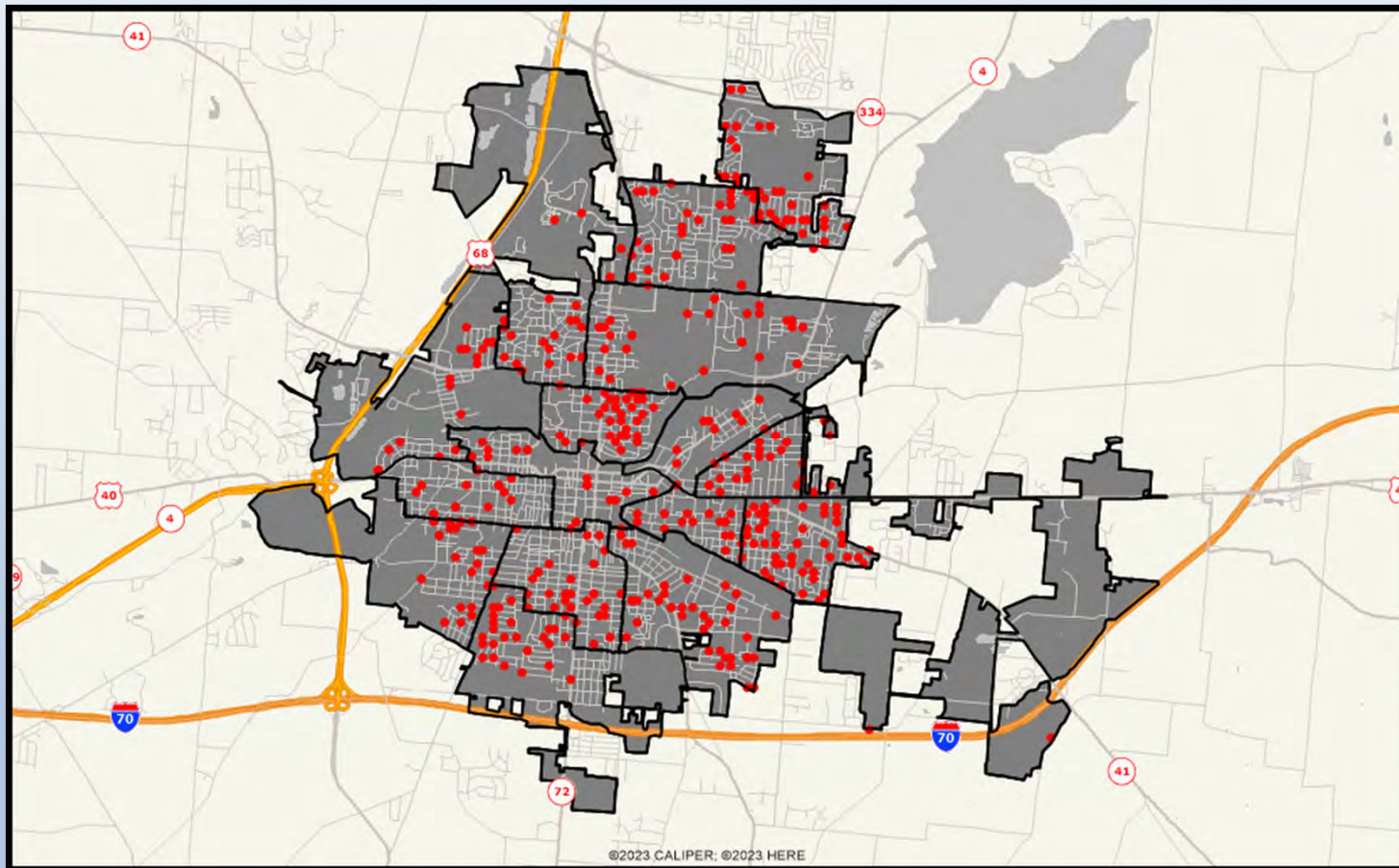
## Interpreting the Maps

The maps on the following pages show the mean ratings for several questions on the survey by Census Block Group. If all areas on a map are the same color, then residents generally feel the same about that issue regardless of the location of their home.

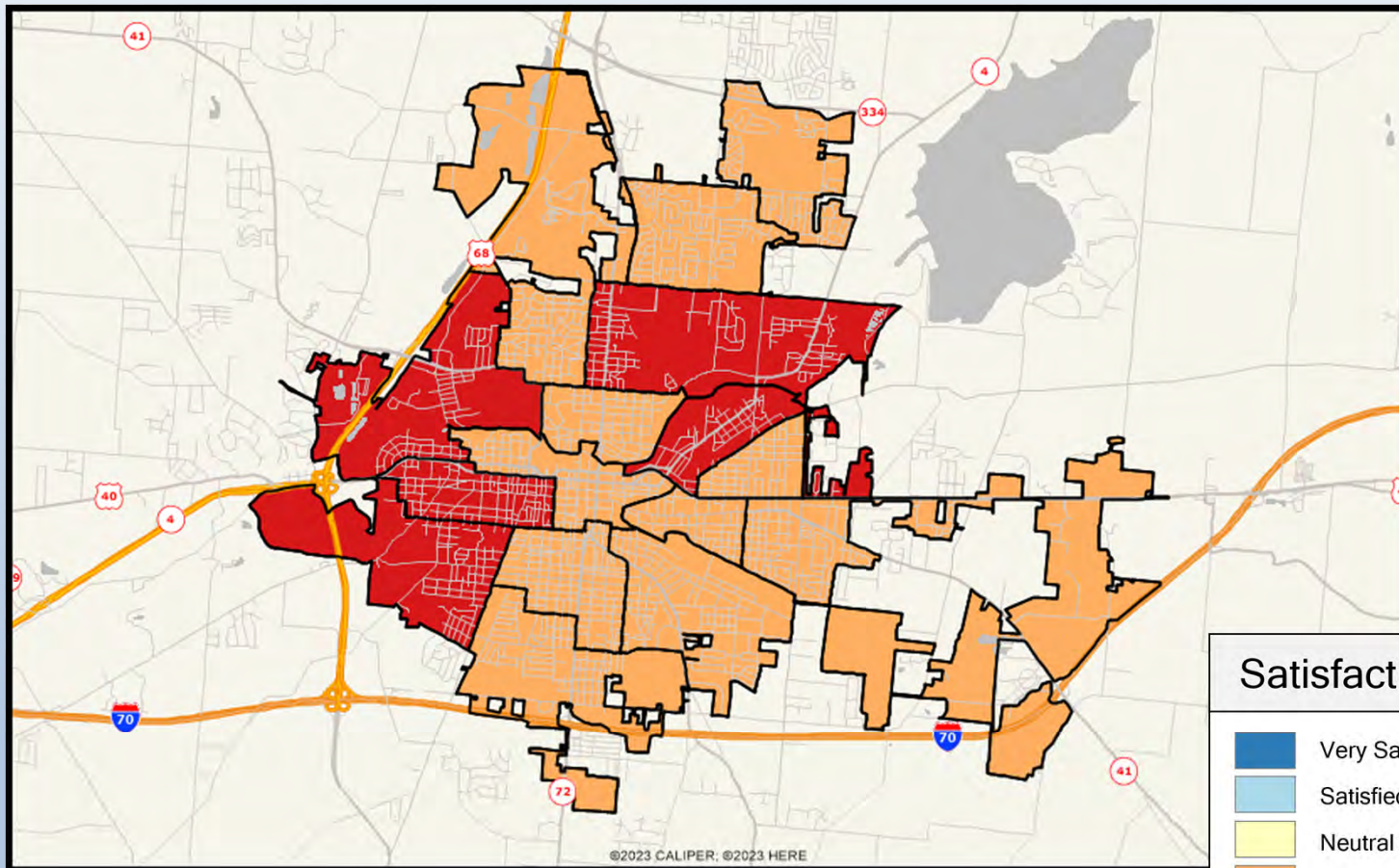
When reading the maps, please use the following color scheme as a guide:

- **DARK/LIGHT BLUE** shades indicate POSITIVE ratings. Shades of blue generally indicate satisfaction with a service, ratings of “excellent” or “good” and ratings of “very safe” or “safe.”
- **OFF-WHITE** shades indicate NEUTRAL ratings. Shades of neutral generally indicate that residents thought the quality of service delivery is adequate.
- **ORANGE/RED** shades indicate NEGATIVE ratings. Shades of orange/red generally indicate dissatisfaction with a service, ratings of “below average” or “poor” and ratings of “unsafe” or “very unsafe.”

# Location of Respondents (Boundaries by Census Block Group)



# Q1-01. Condition of streets, pavement, and sidewalks in Springfield

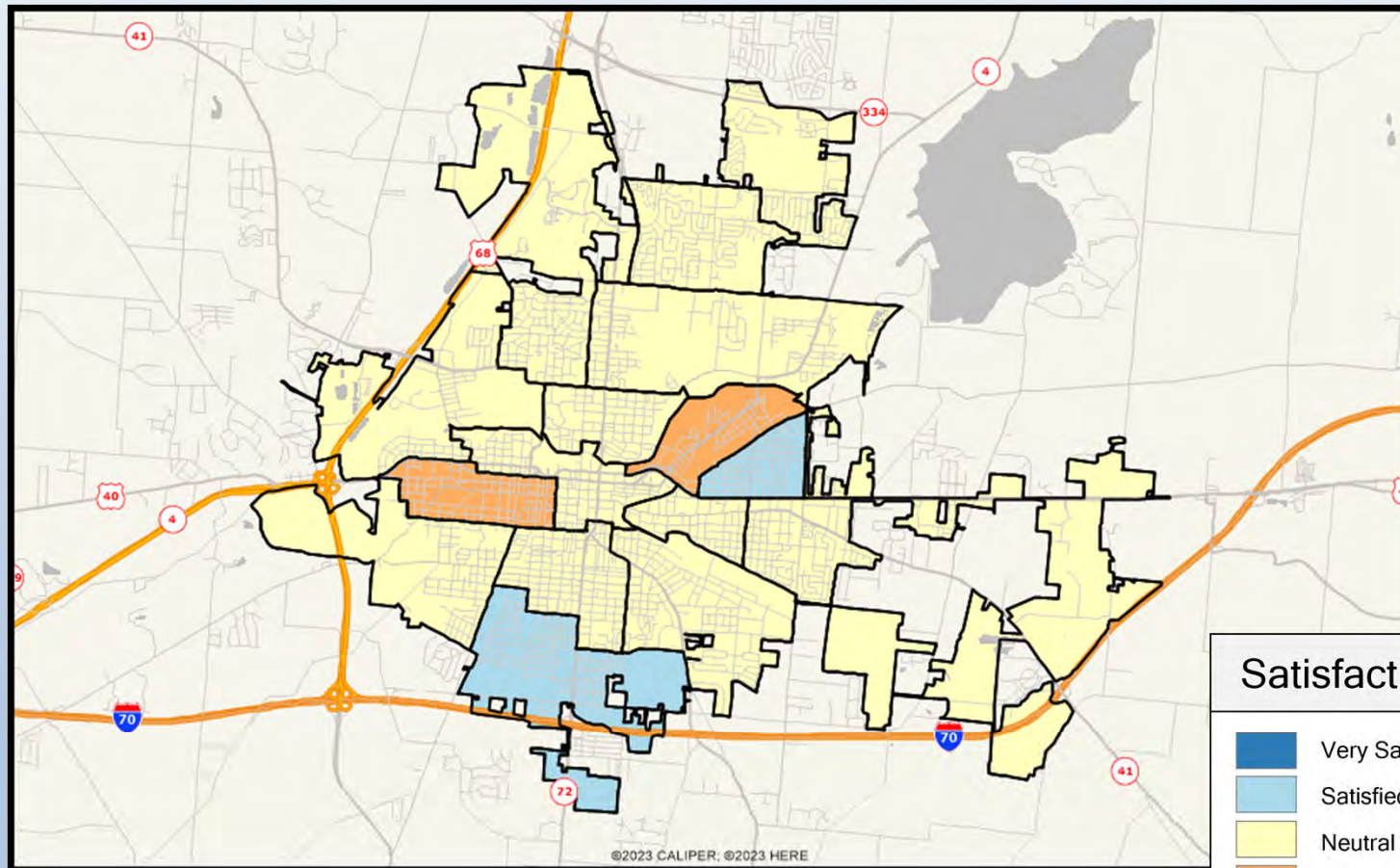


**Satisfaction**

- Very Satisfied
- Satisfied
- Neutral
- Dissatisfied
- Very Dissatisfied
- No Response

ETC INSTITUTE

# Q1-02. Customer service received from City employees

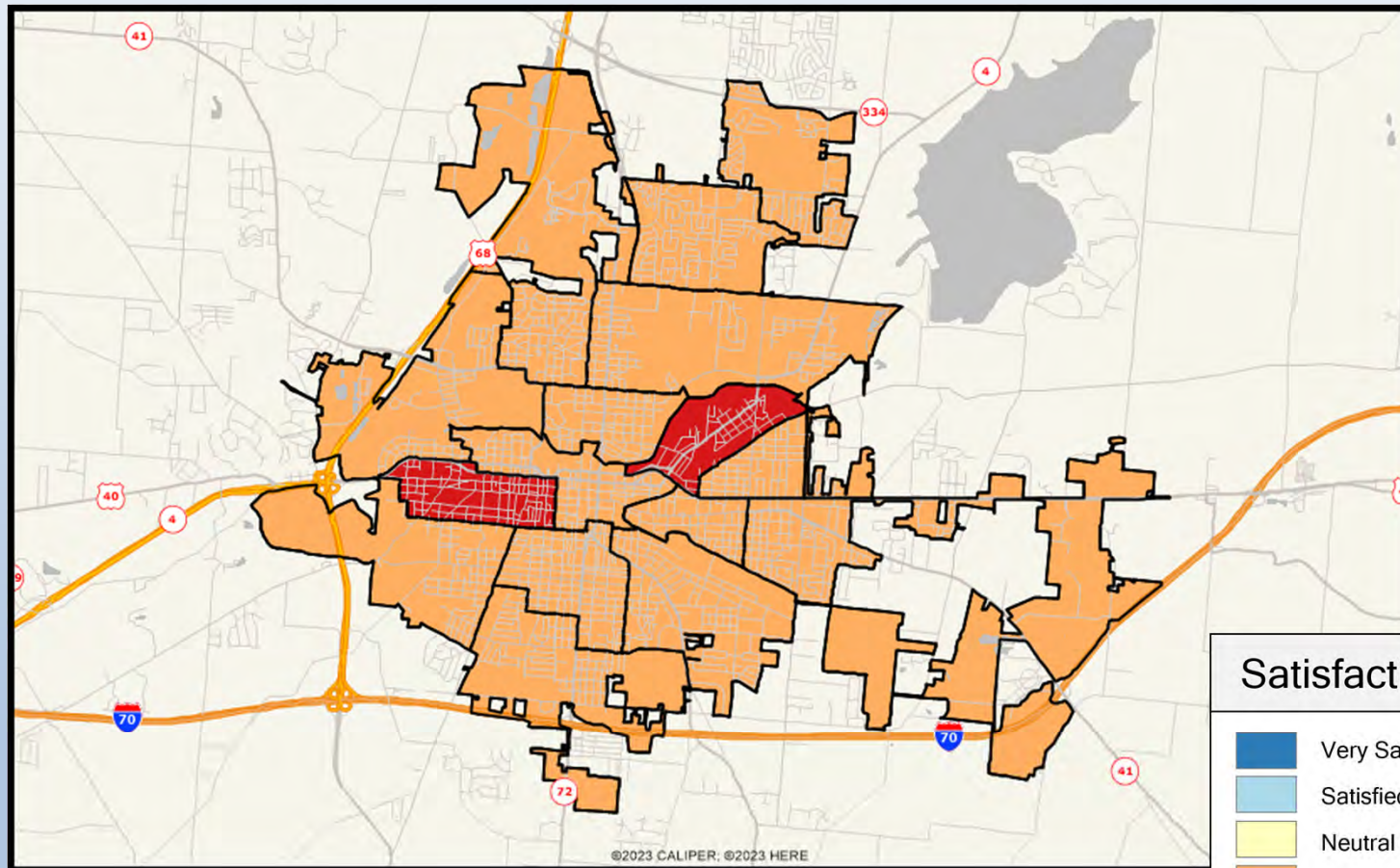


**Satisfaction**

- Very Satisfied
- Satisfied
- Neutral
- Dissatisfied
- Very Dissatisfied
- No Response


ETC INSTITUTE

# Q1-03. Effectiveness of City communication with the public

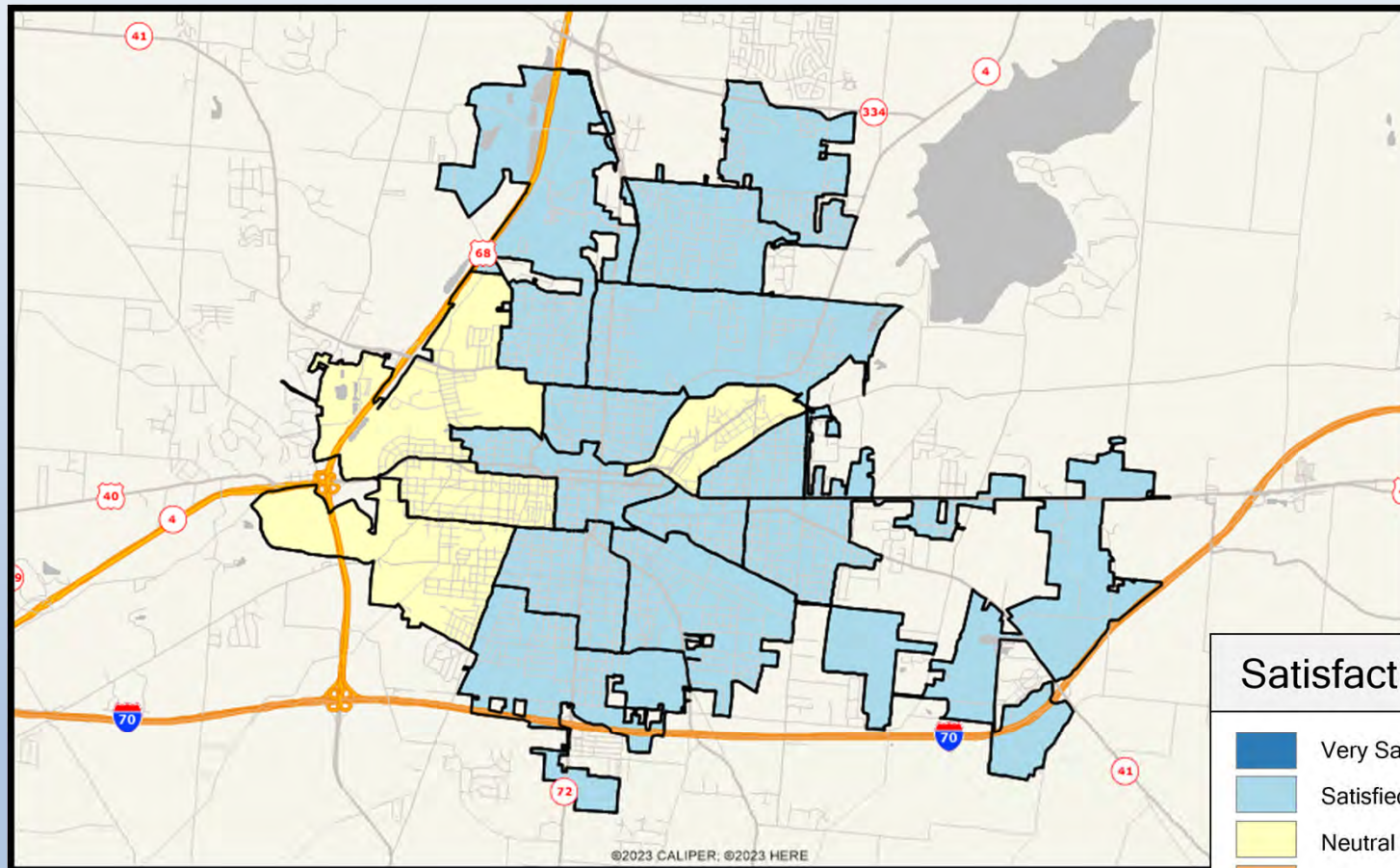


**Satisfaction**

- Very Satisfied
- Satisfied
- Neutral
- Dissatisfied
- Very Dissatisfied
- No Response



# Q1-04. Emergency medical services

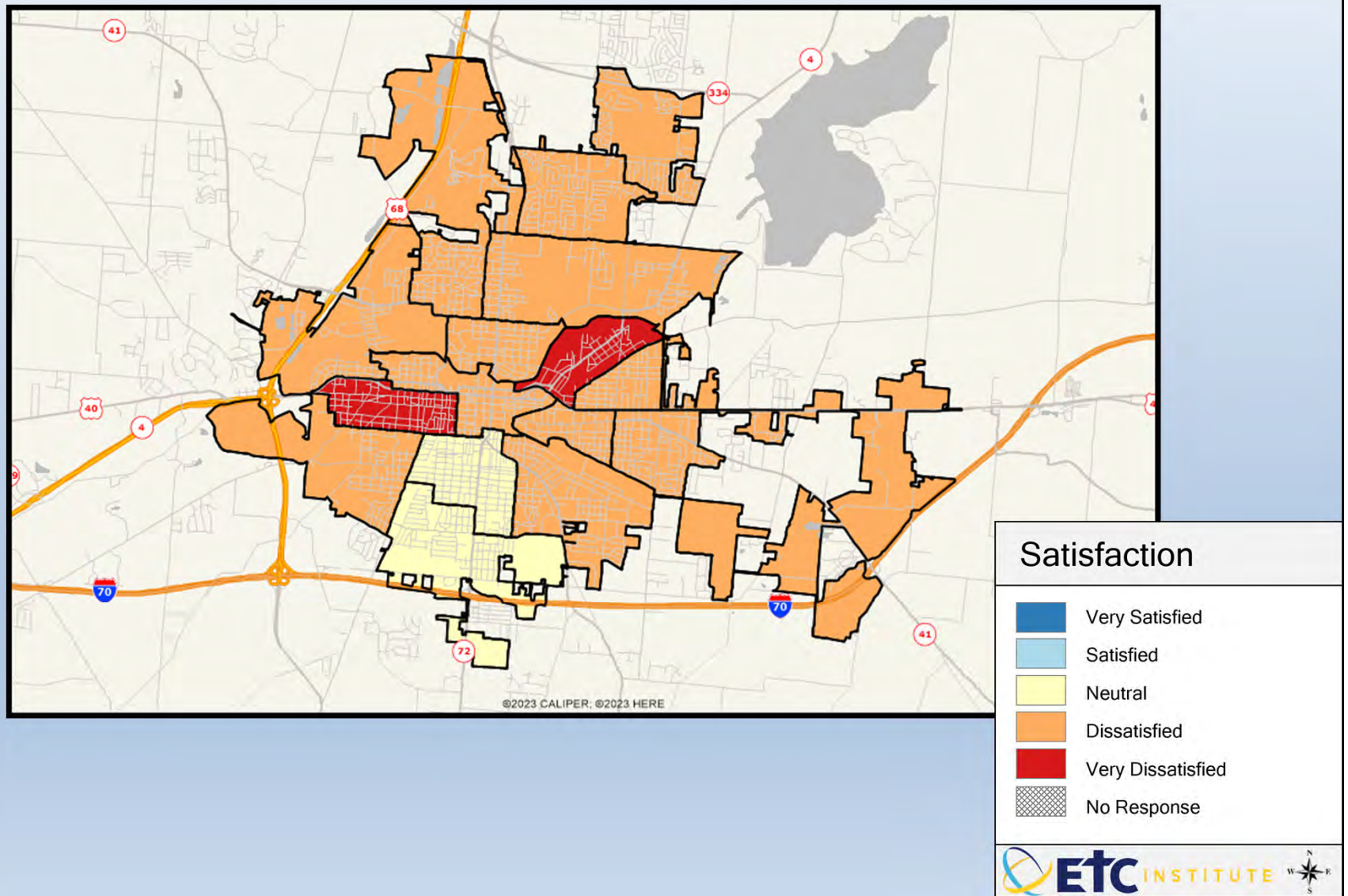


**Satisfaction**

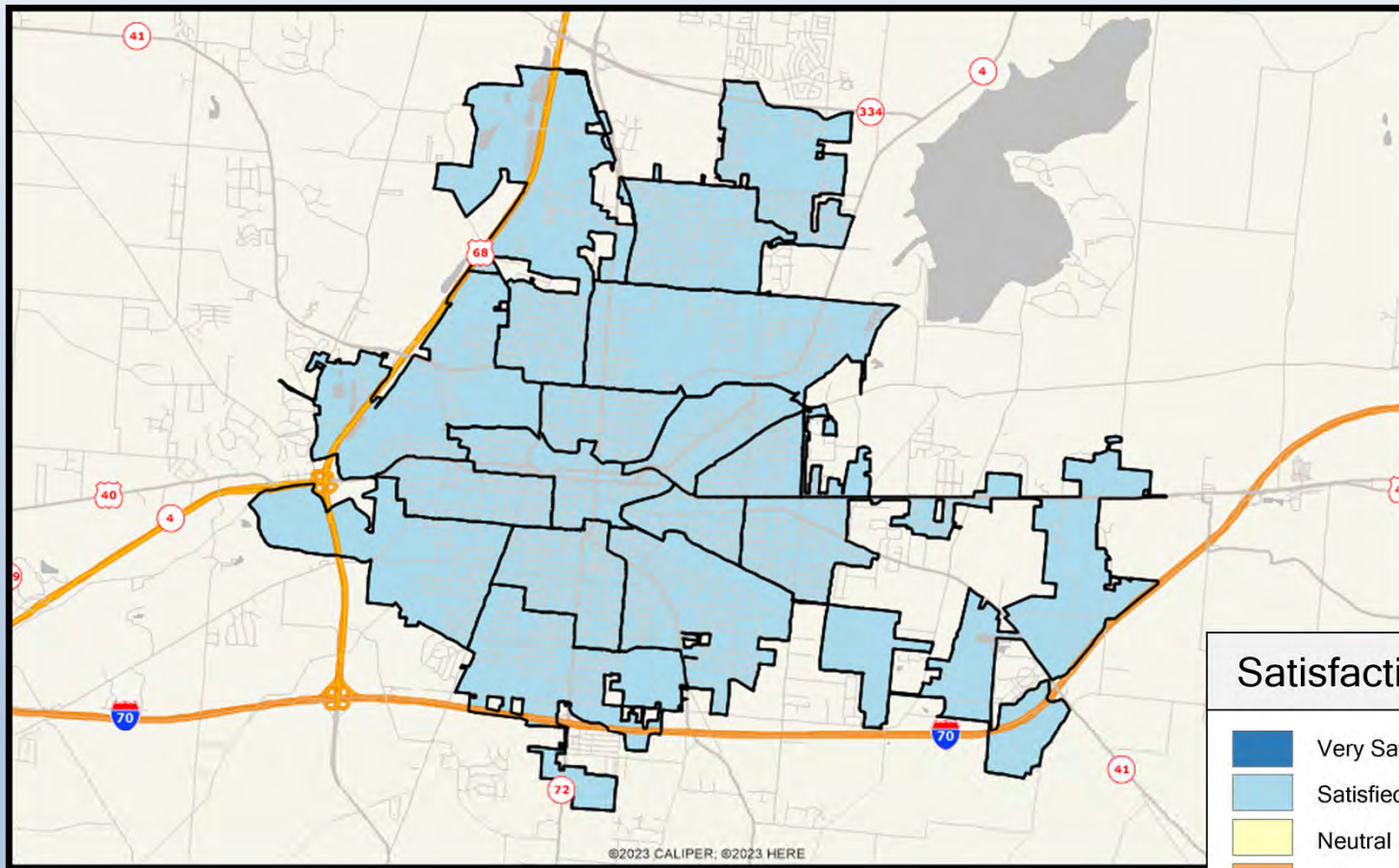
- Very Satisfied
- Satisfied
- Neutral
- Dissatisfied
- Very Dissatisfied
- No Response

ETC INSTITUTE

# Q1-05. Enforcement of City codes and ordinances



# Q1-06. Fire services

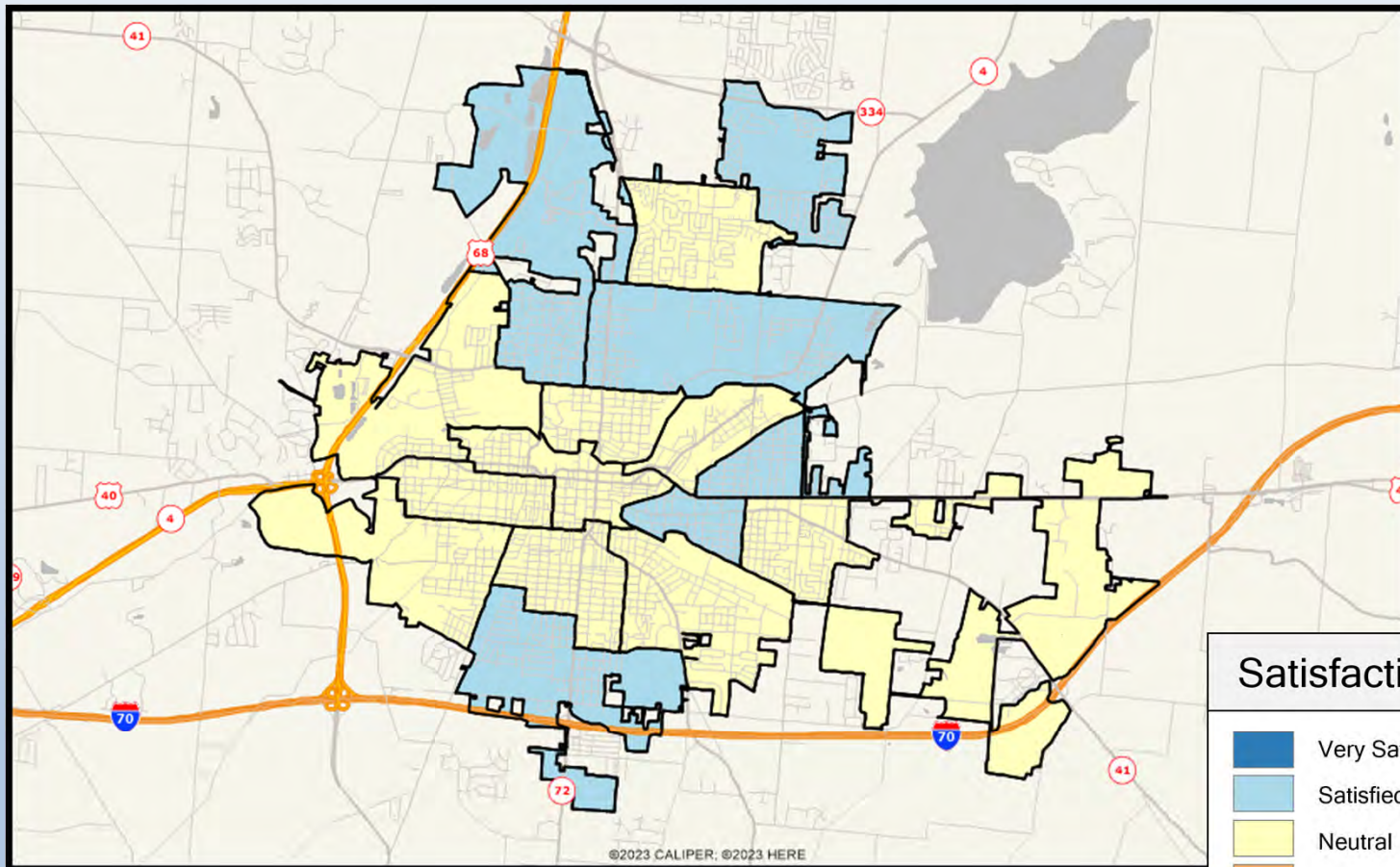


**Satisfaction**

- Very Satisfied
- Satisfied
- Neutral
- Dissatisfied
- Very Dissatisfied
- No Response

ETC INSTITUTE

# Q1-07. Mowing and trimming along City streets and other public areas

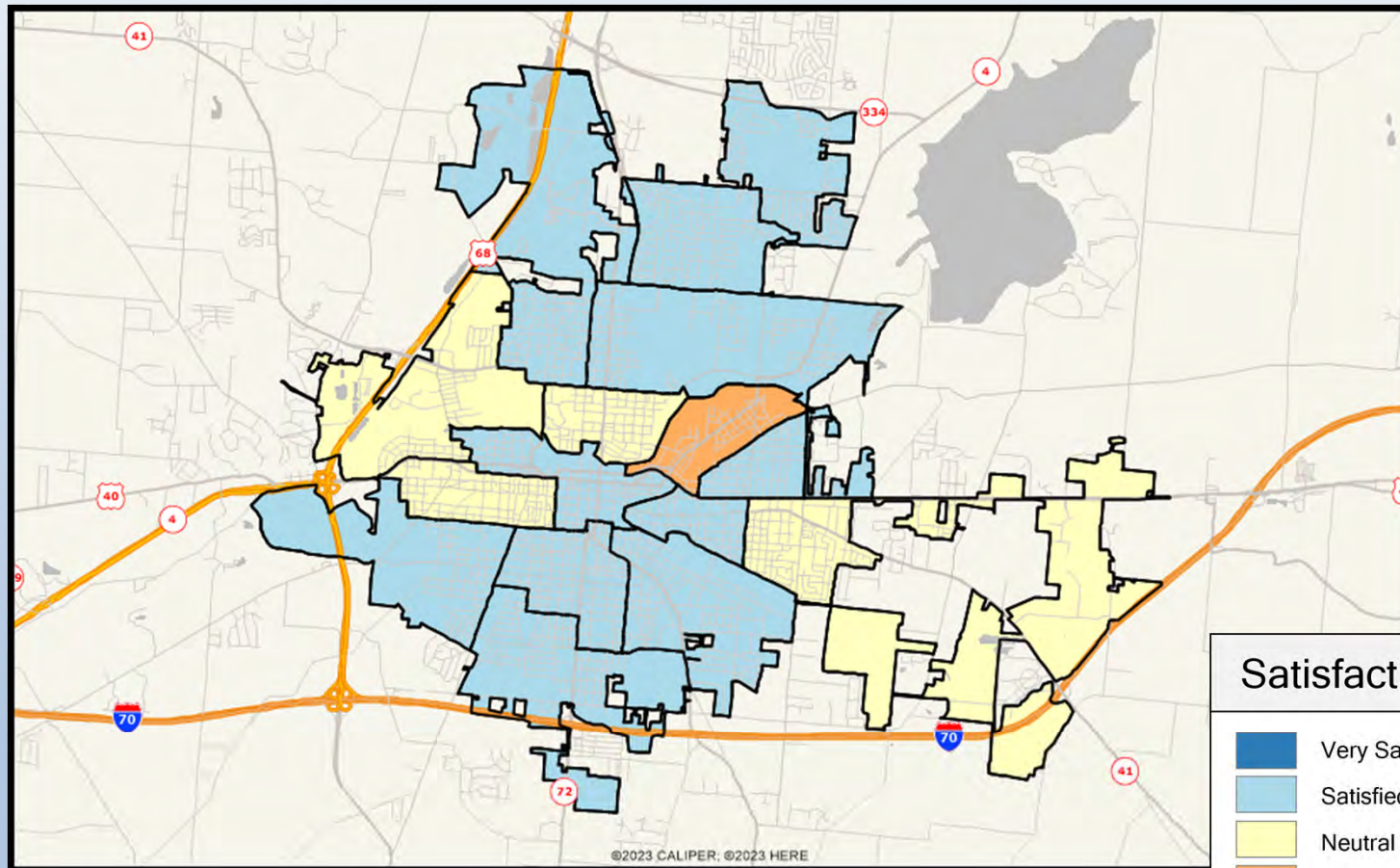


**Satisfaction**

- Very Satisfied
- Satisfied
- Neutral
- Dissatisfied
- Very Dissatisfied
- No Response

ETC INSTITUTE

# Q1-08. Parks and recreation facilities and programs

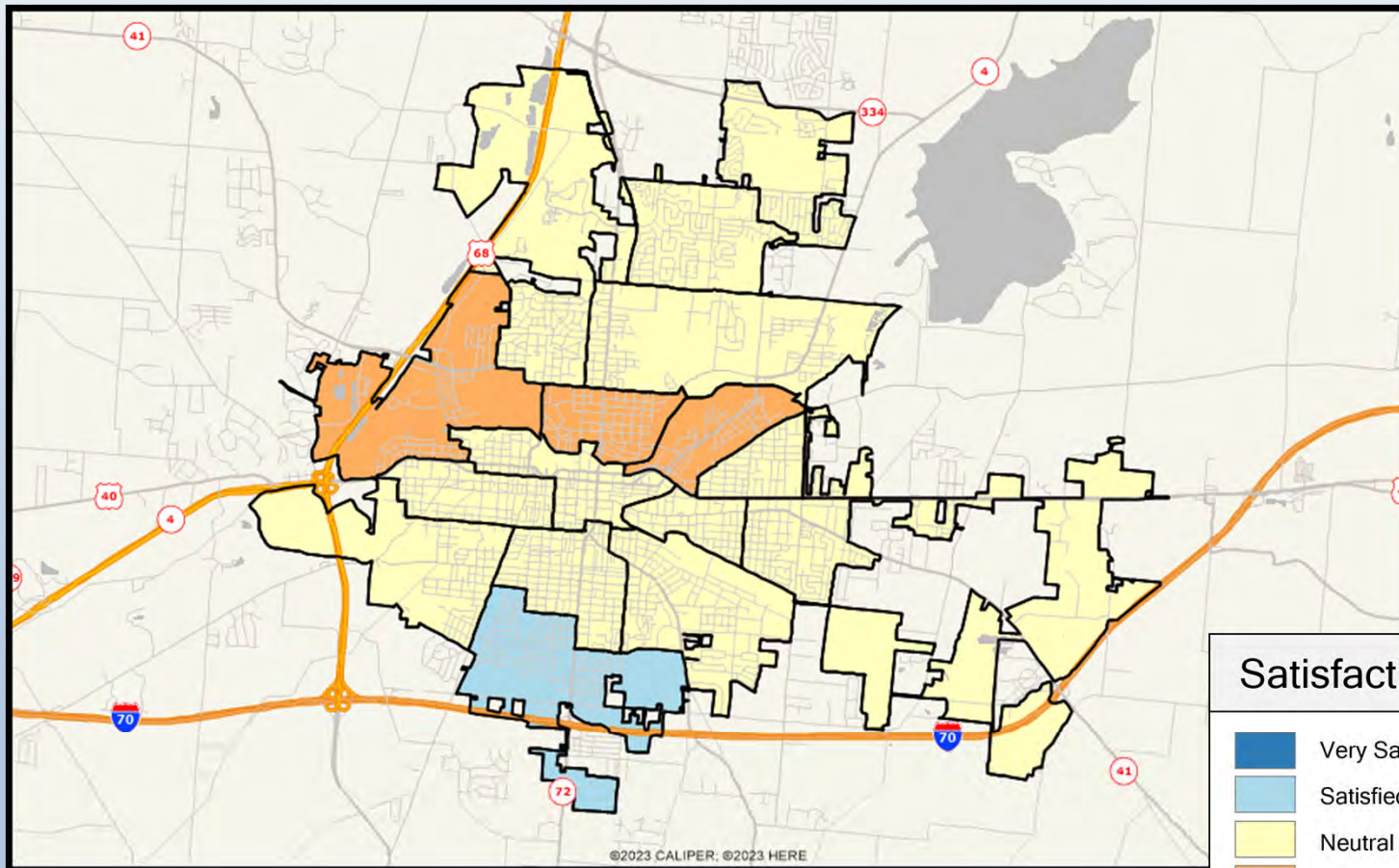


**Satisfaction**

- Very Satisfied
- Satisfied
- Neutral
- Dissatisfied
- Very Dissatisfied
- No Response

ETC INSTITUTE

# Q1-09. Police services

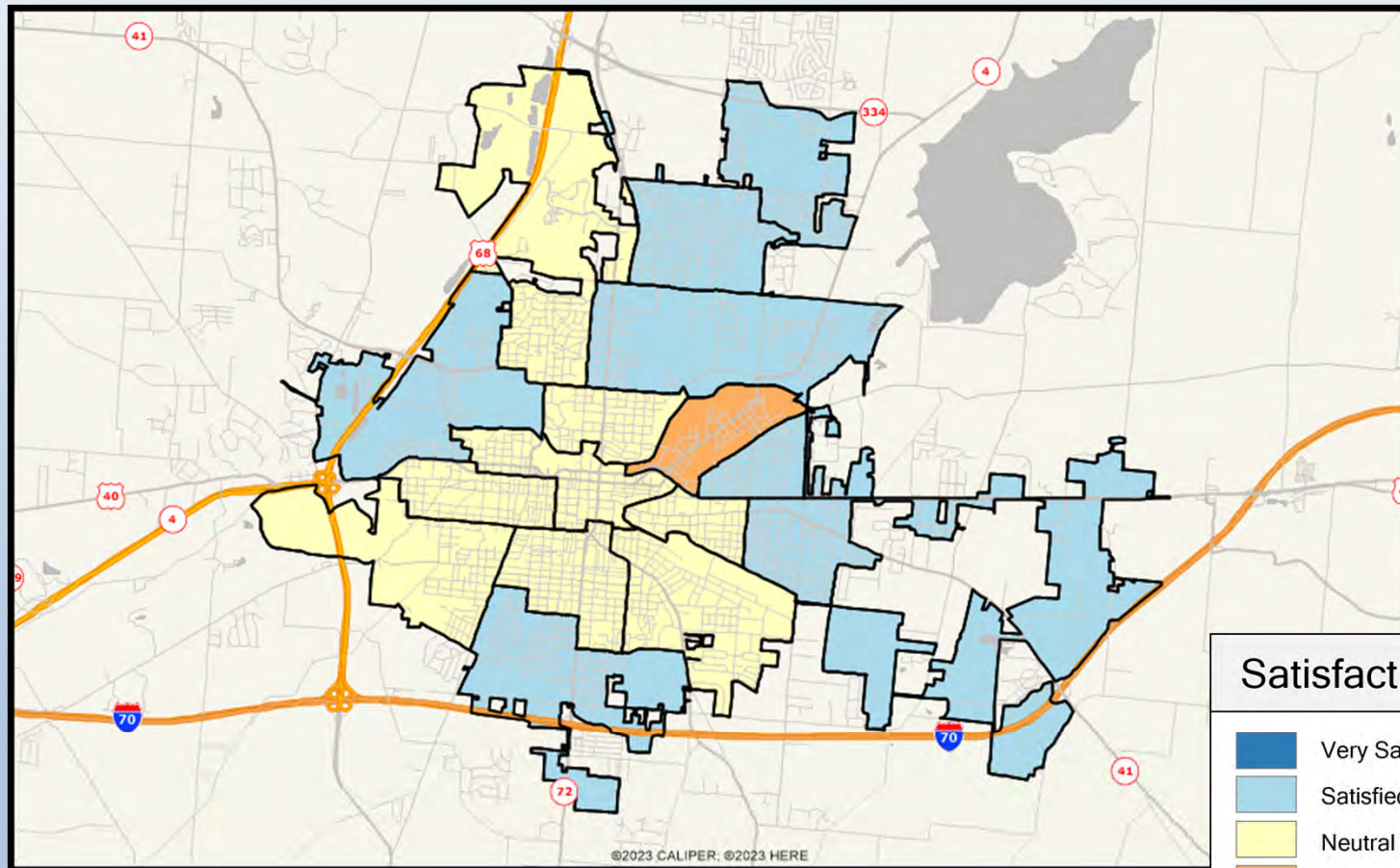


**Satisfaction**

- Very Satisfied
- Satisfied
- Neutral
- Dissatisfied
- Very Dissatisfied
- No Response

**ETC INSTITUTE**

# Q1-10. Water/wastewater/sewer services

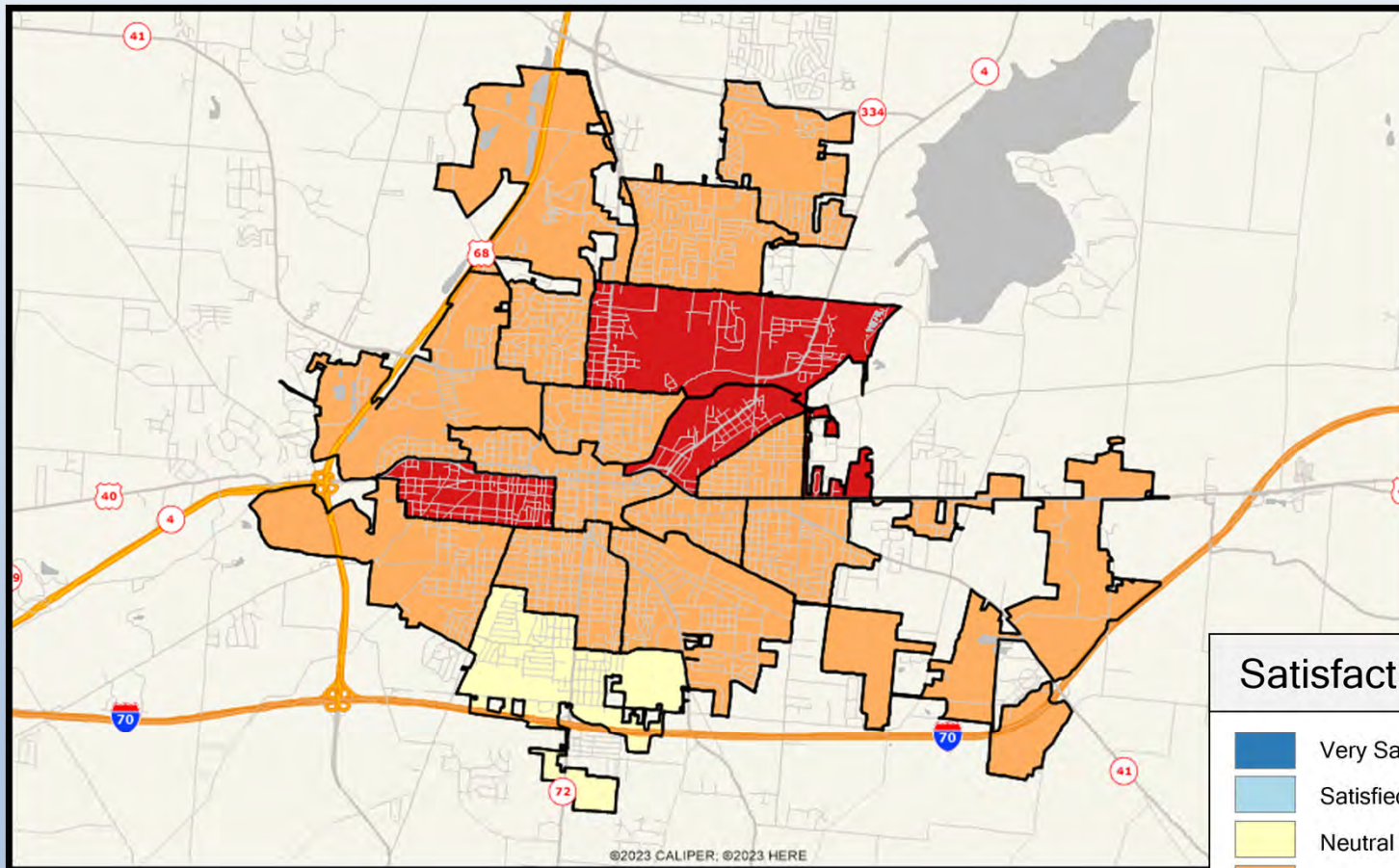


**Satisfaction**

- Very Satisfied
- Satisfied
- Neutral
- Dissatisfied
- Very Dissatisfied
- No Response

**ETC INSTITUTE**

# Q3-01. Overall feeling of safety in the City of Springfield

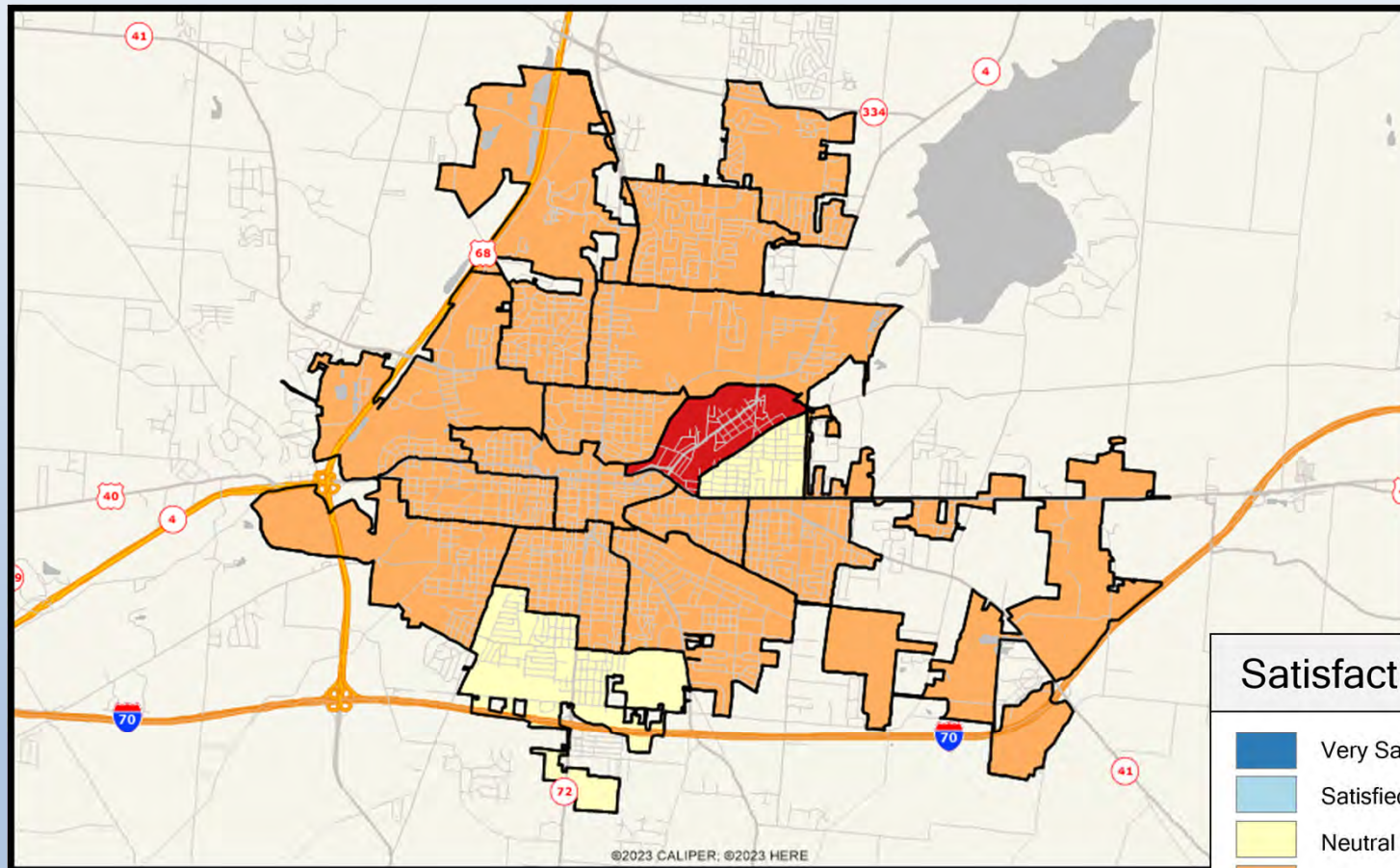


**Satisfaction**

- Very Satisfied
- Satisfied
- Neutral
- Dissatisfied
- Very Dissatisfied
- No Response

**ETC INSTITUTE**

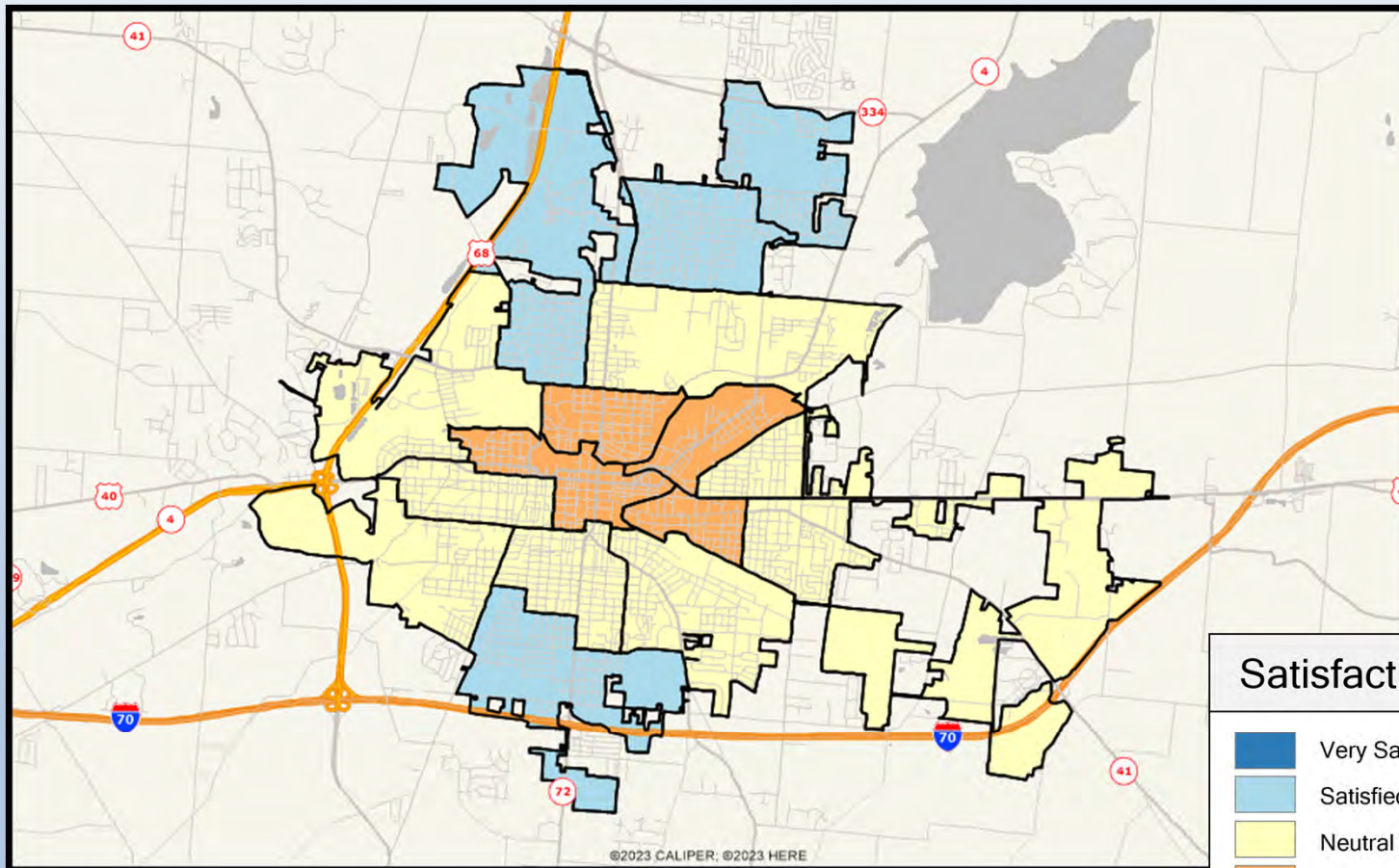
# Q3-02. Overall quality of life in the City of Springfield



**Satisfaction**

- Very Satisfied
- Satisfied
- Neutral
- Dissatisfied
- Very Dissatisfied
- No Response

# Q3-03. Overall quality of life in your neighborhood

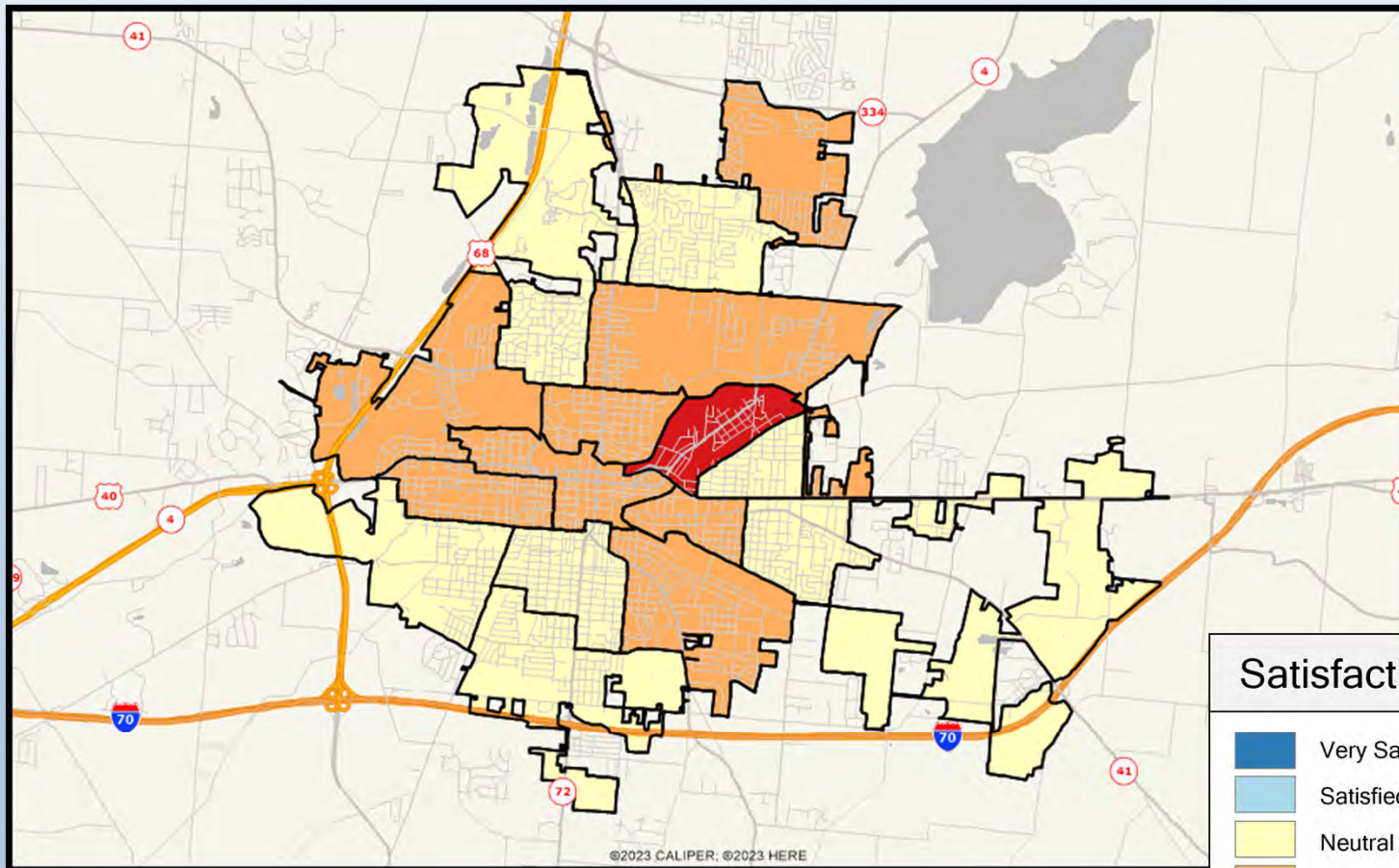


**Satisfaction**

- Very Satisfied
- Satisfied
- Neutral
- Dissatisfied
- Very Dissatisfied
- No Response

**ETC INSTITUTE**

# Q3-04. Overall quality of new development in the City of Springfield

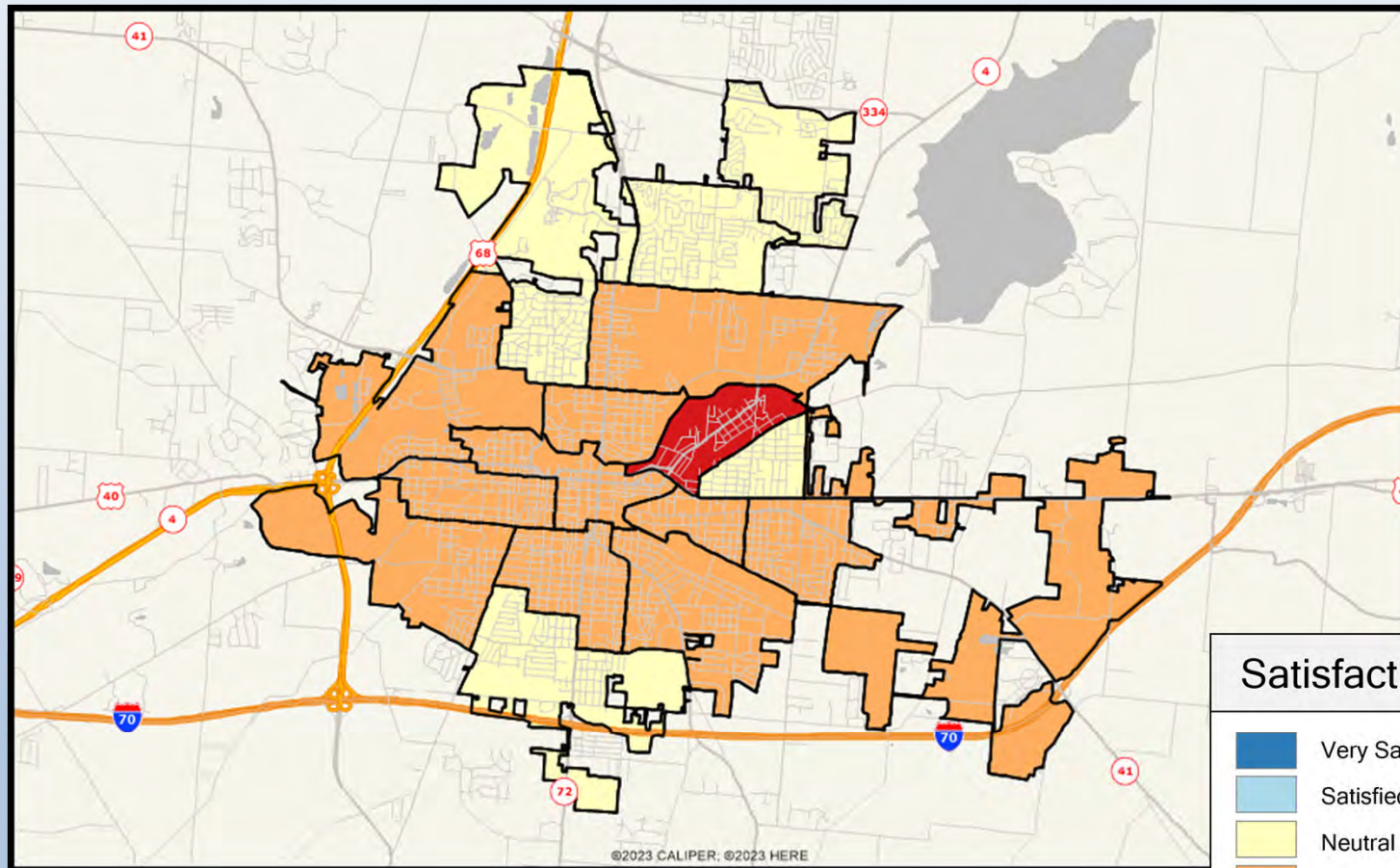


**Satisfaction**

- Very Satisfied
- Satisfied
- Neutral
- Dissatisfied
- Very Dissatisfied
- No Response

**ETC INSTITUTE**

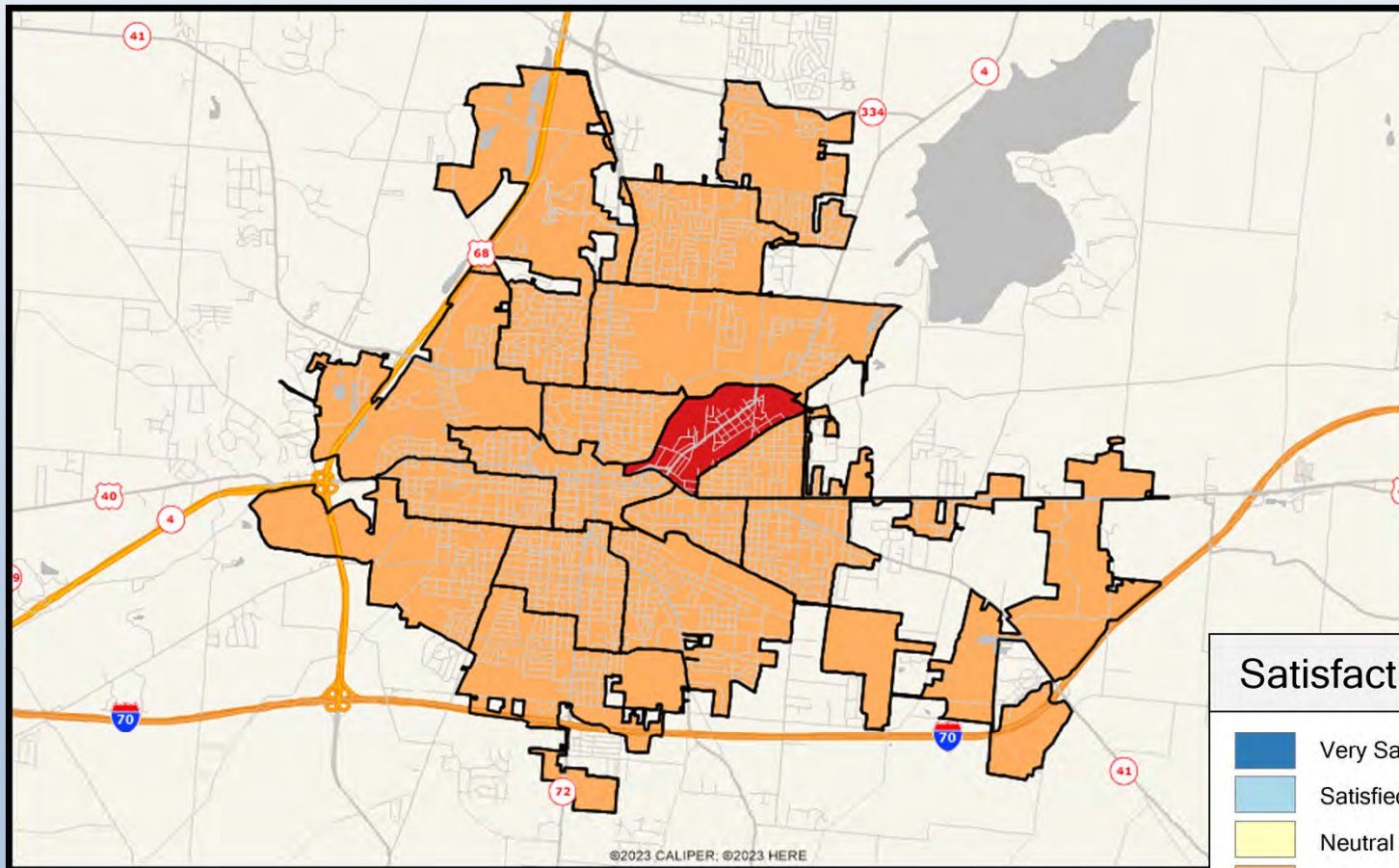
# Q3-05. Overall quality of services provided by the City of Springfield



**Satisfaction**

- Very Satisfied
- Satisfied
- Neutral
- Dissatisfied
- Very Dissatisfied
- No Response

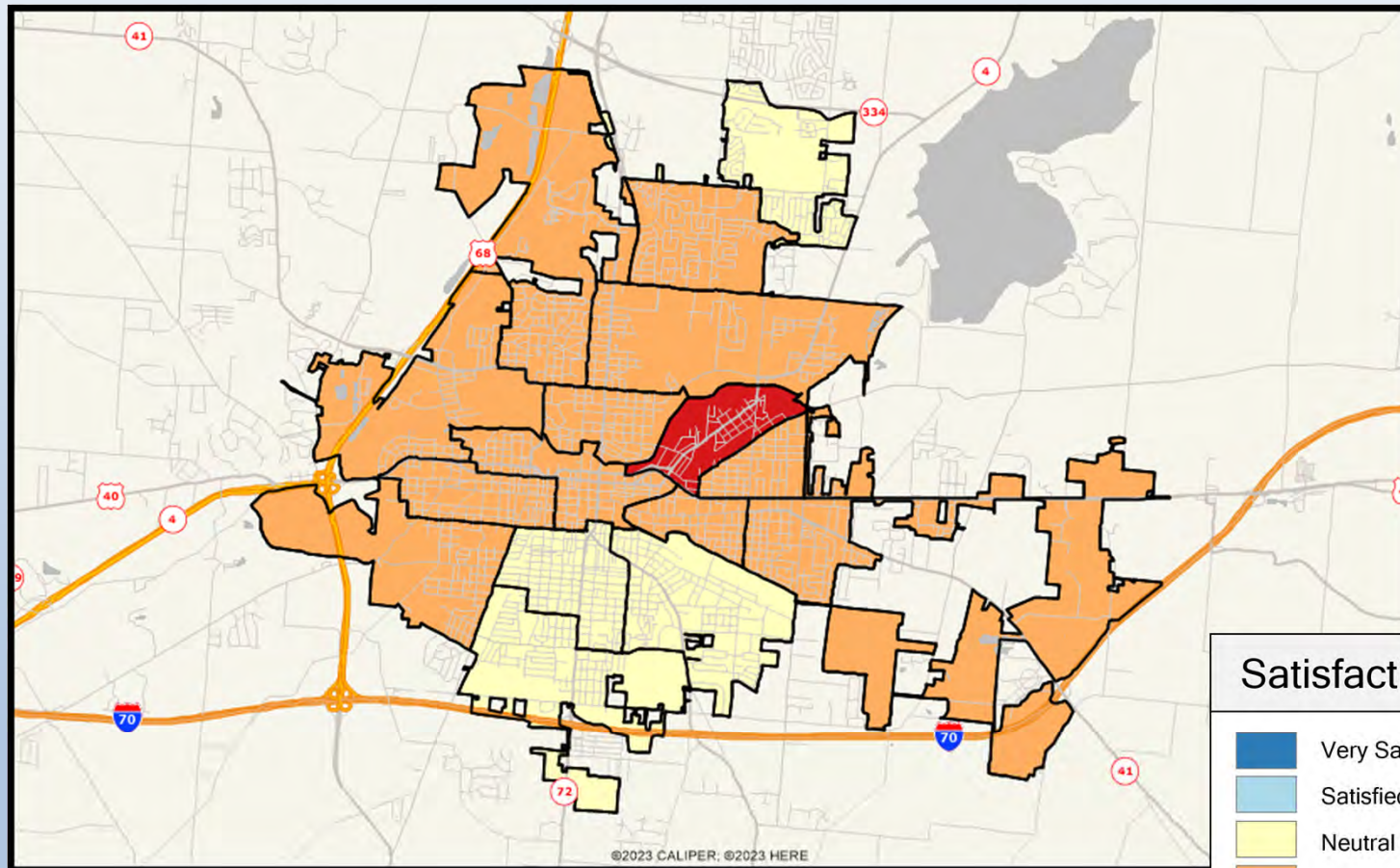
# Q3-06. Overall value you receive for City of Springfield taxes and fees



**Satisfaction**

- Very Satisfied
- Satisfied
- Neutral
- Dissatisfied
- Very Dissatisfied
- No Response

# Q3-07. The City of Springfield as a place to do business

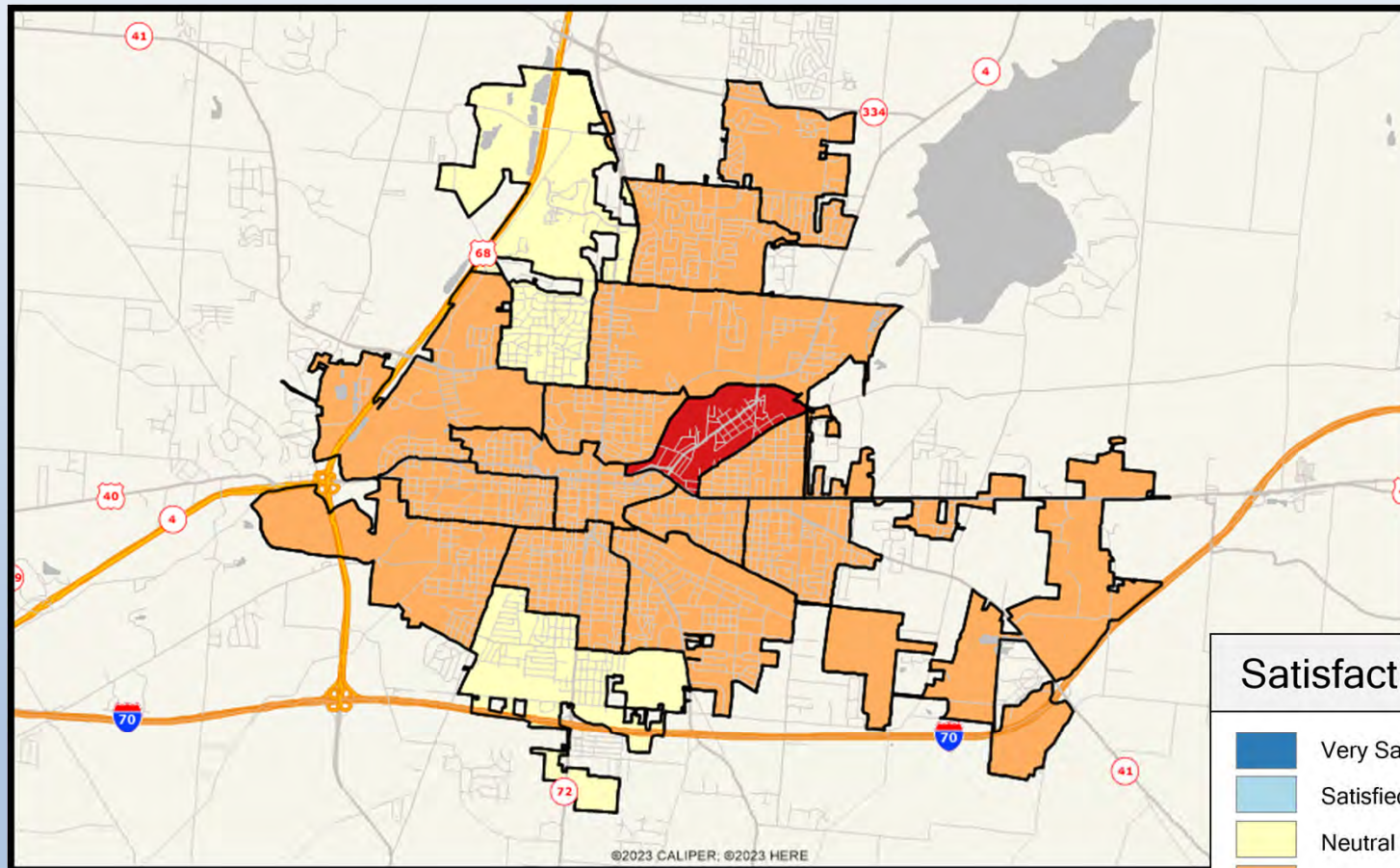


**Satisfaction**

- Very Satisfied
- Satisfied
- Neutral
- Dissatisfied
- Very Dissatisfied
- No Response

ETC INSTITUTE

# Q3-08. The City of Springfield as a place to live

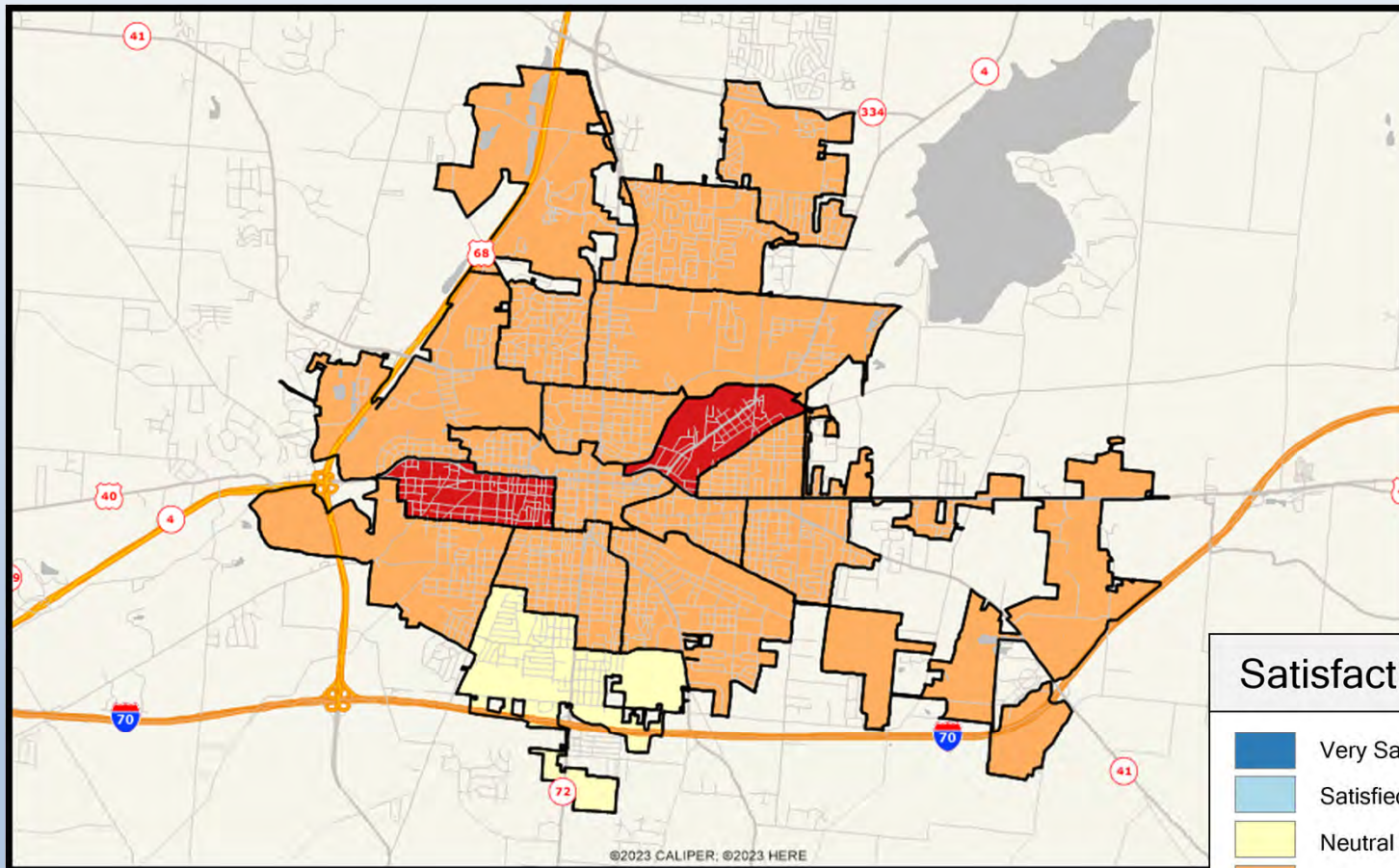


**Satisfaction**

- Very Satisfied
- Satisfied
- Neutral
- Dissatisfied
- Very Dissatisfied
- No Response

**ETC INSTITUTE**

# Q3-09. The City of Springfield as a place to raise a family

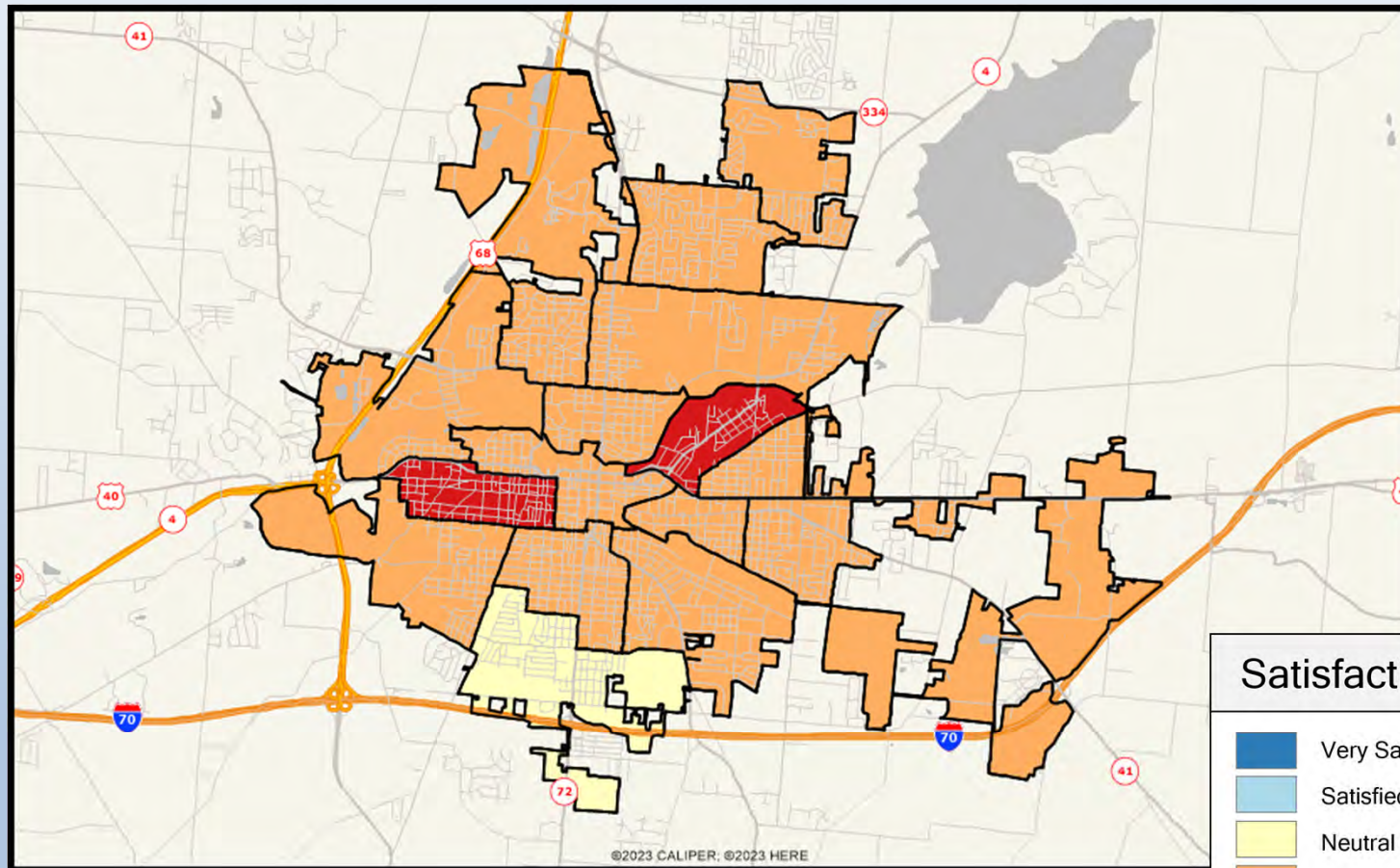


**Satisfaction**

- Very Satisfied
- Satisfied
- Neutral
- Dissatisfied
- Very Dissatisfied
- No Response


**ETC INSTITUTE**

# Q3-10. The City of Springfield as a place to retire

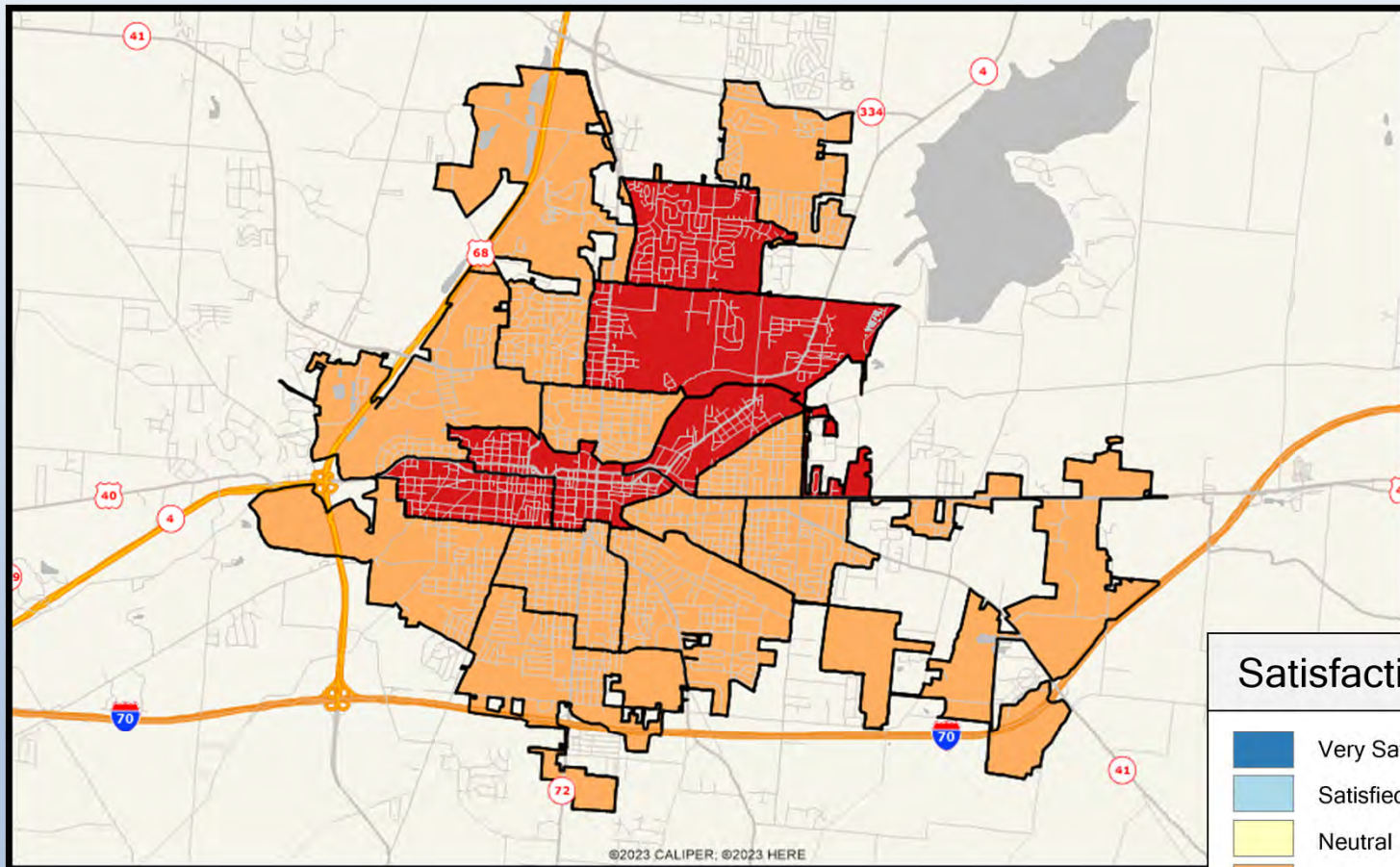


**Satisfaction**

- Very Satisfied
- Satisfied
- Neutral
- Dissatisfied
- Very Dissatisfied
- No Response



# Q5-01. Enforcement of local traffic laws

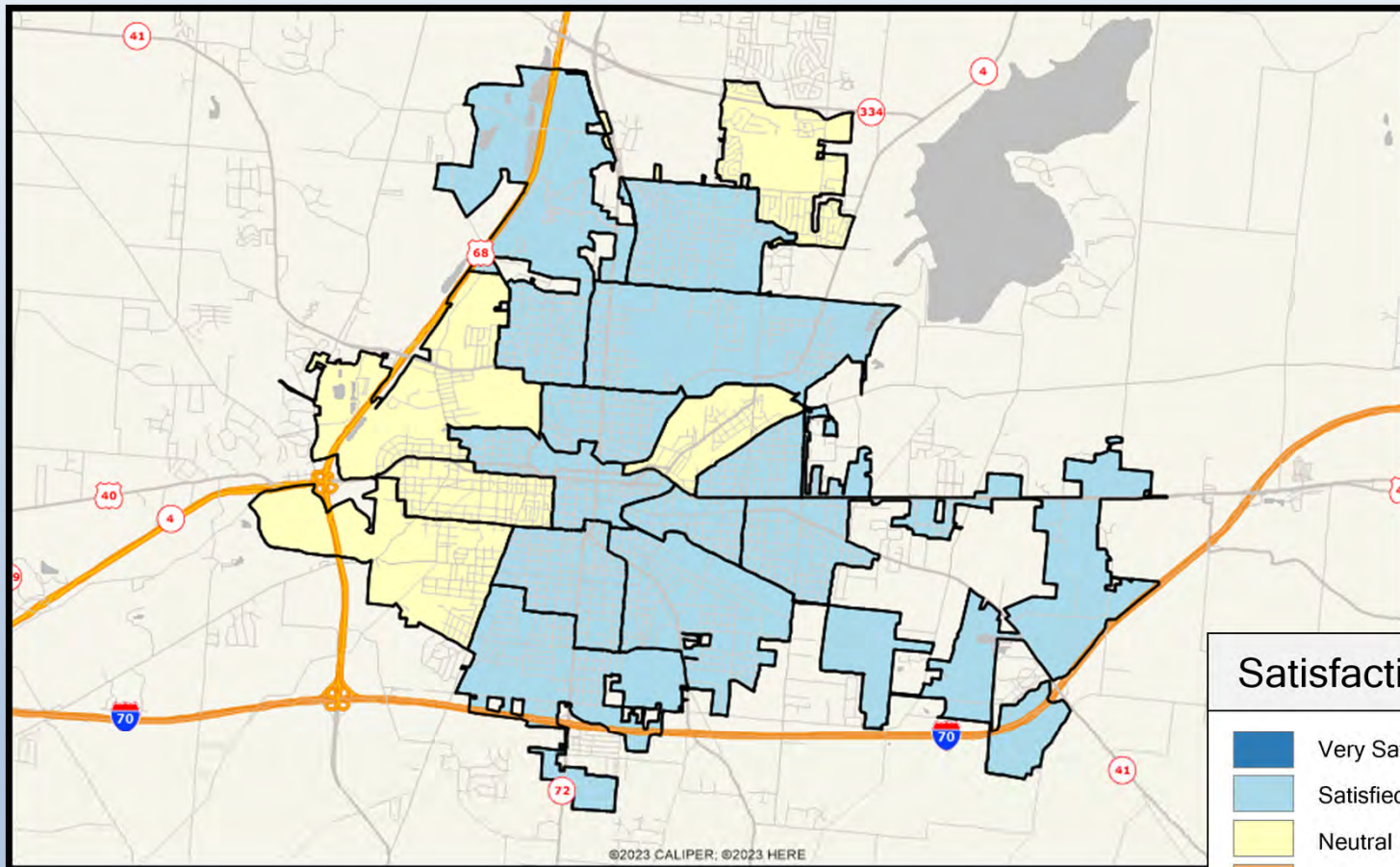


**Satisfaction**

- Very Satisfied
- Satisfied
- Neutral
- Dissatisfied
- Very Dissatisfied
- No Response

**ETC INSTITUTE**

# Q5-02. How quickly fire and emergency medical services personnel respond to emergencies

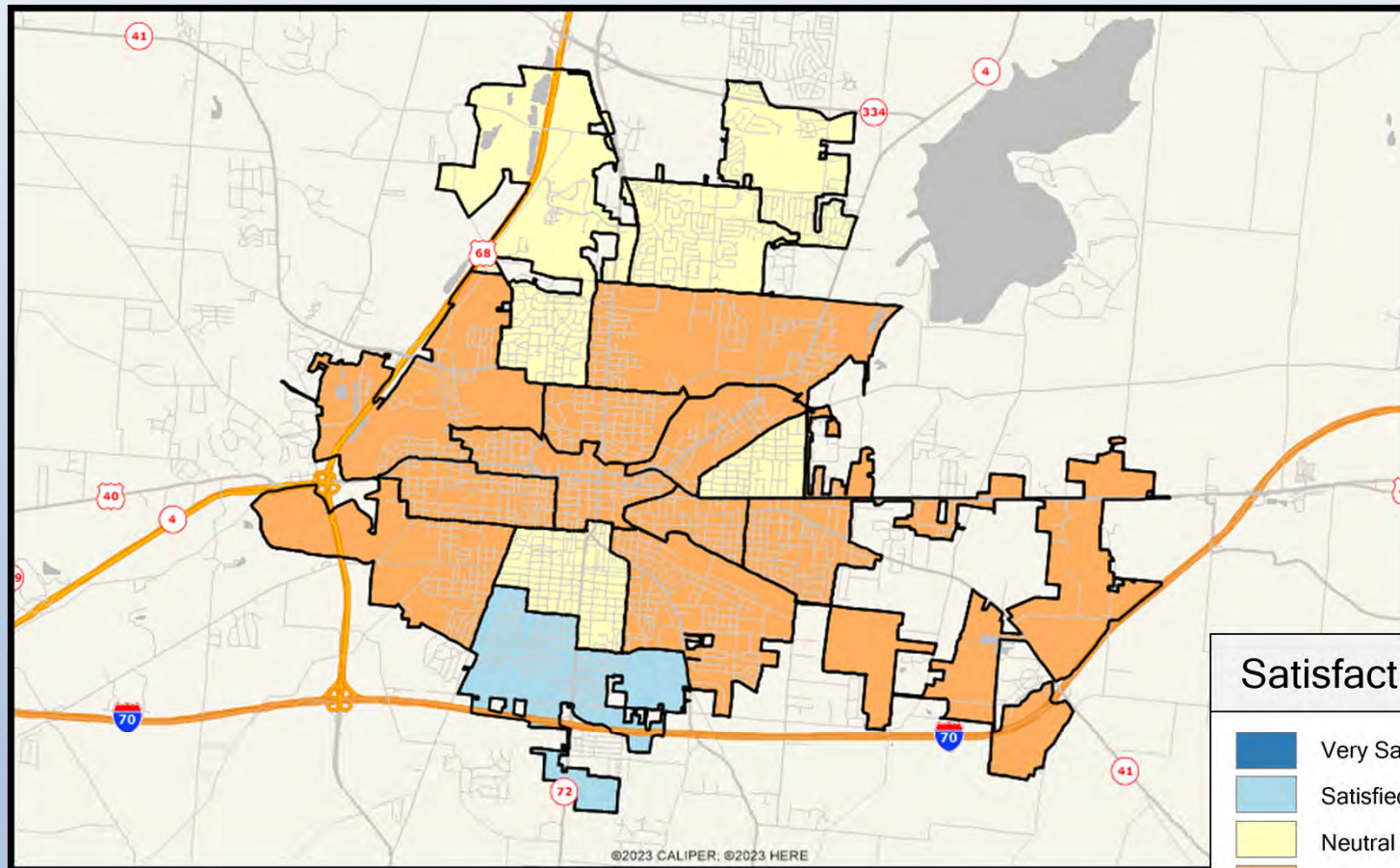


**Satisfaction**

- Very Satisfied
- Satisfied
- Neutral
- Dissatisfied
- Very Dissatisfied
- No Response

**ETC INSTITUTE**

# Q5-03. How quickly police respond to emergencies

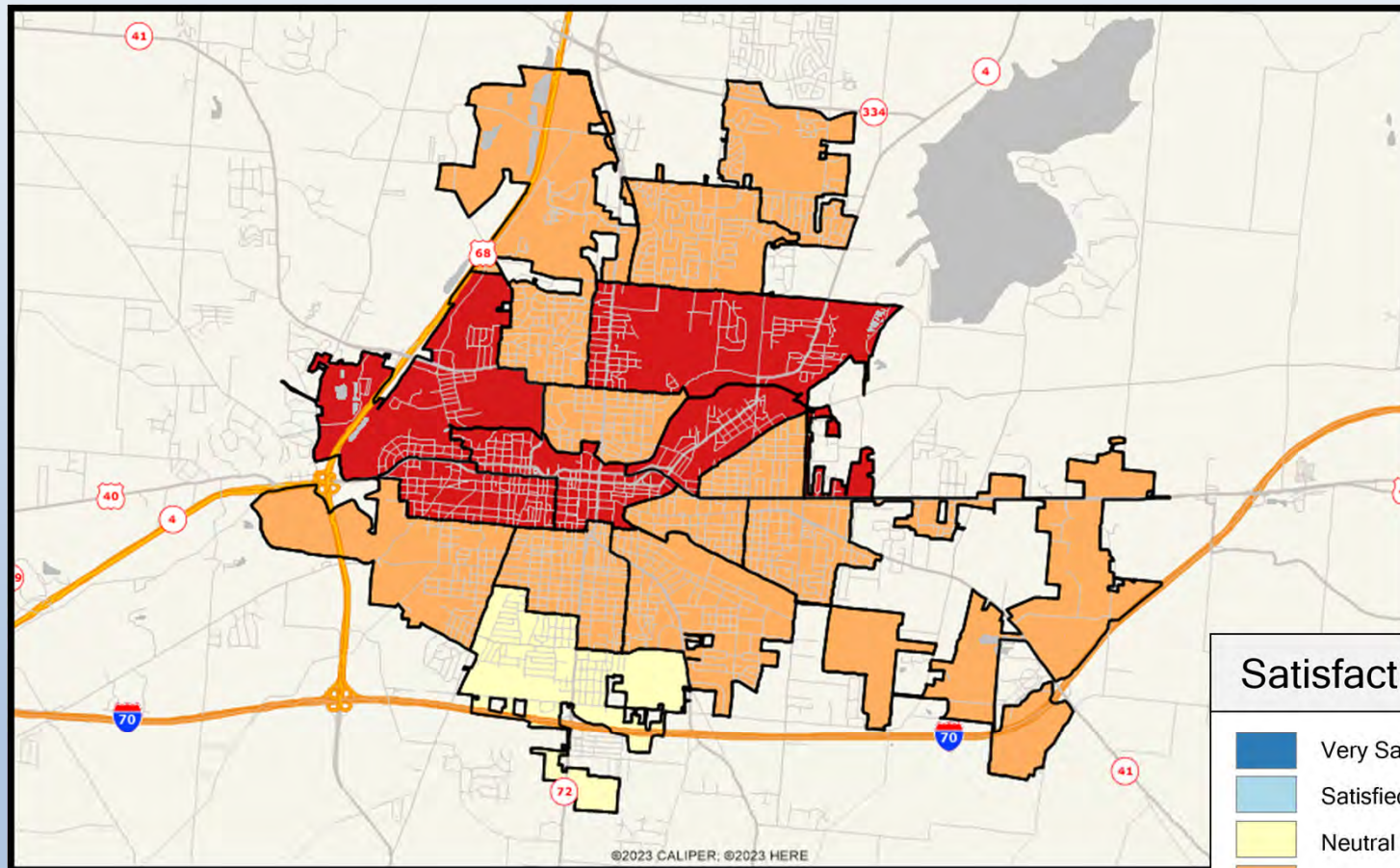


**Satisfaction**

- Very Satisfied
- Satisfied
- Neutral
- Dissatisfied
- Very Dissatisfied
- No Response

**ETC INSTITUTE**

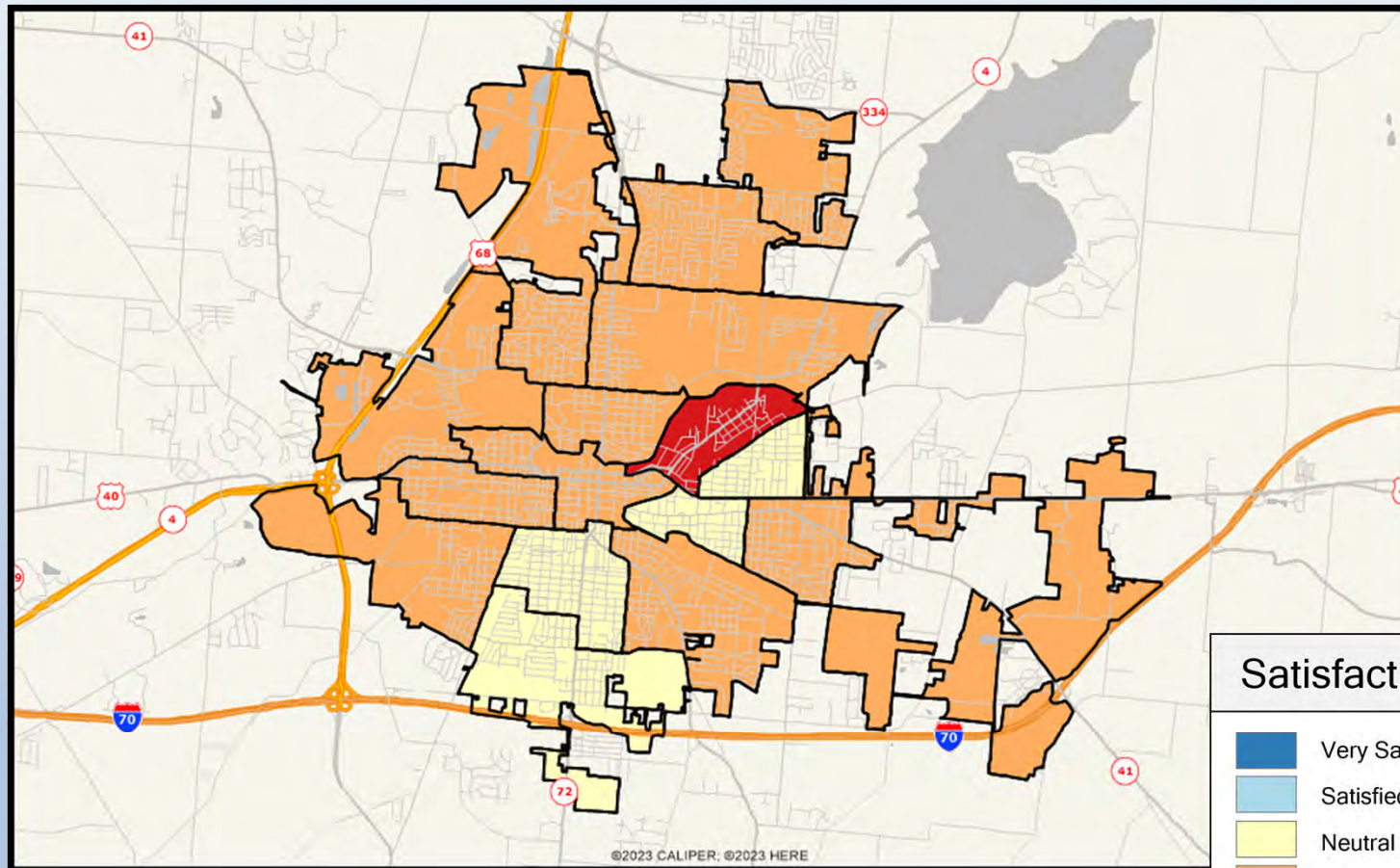
# Q5-04. The City's efforts to prevent crime



**Satisfaction**

- Very Satisfied
- Satisfied
- Neutral
- Dissatisfied
- Very Dissatisfied
- No Response

# Q5-05. Visibility of police in commercial and retail areas

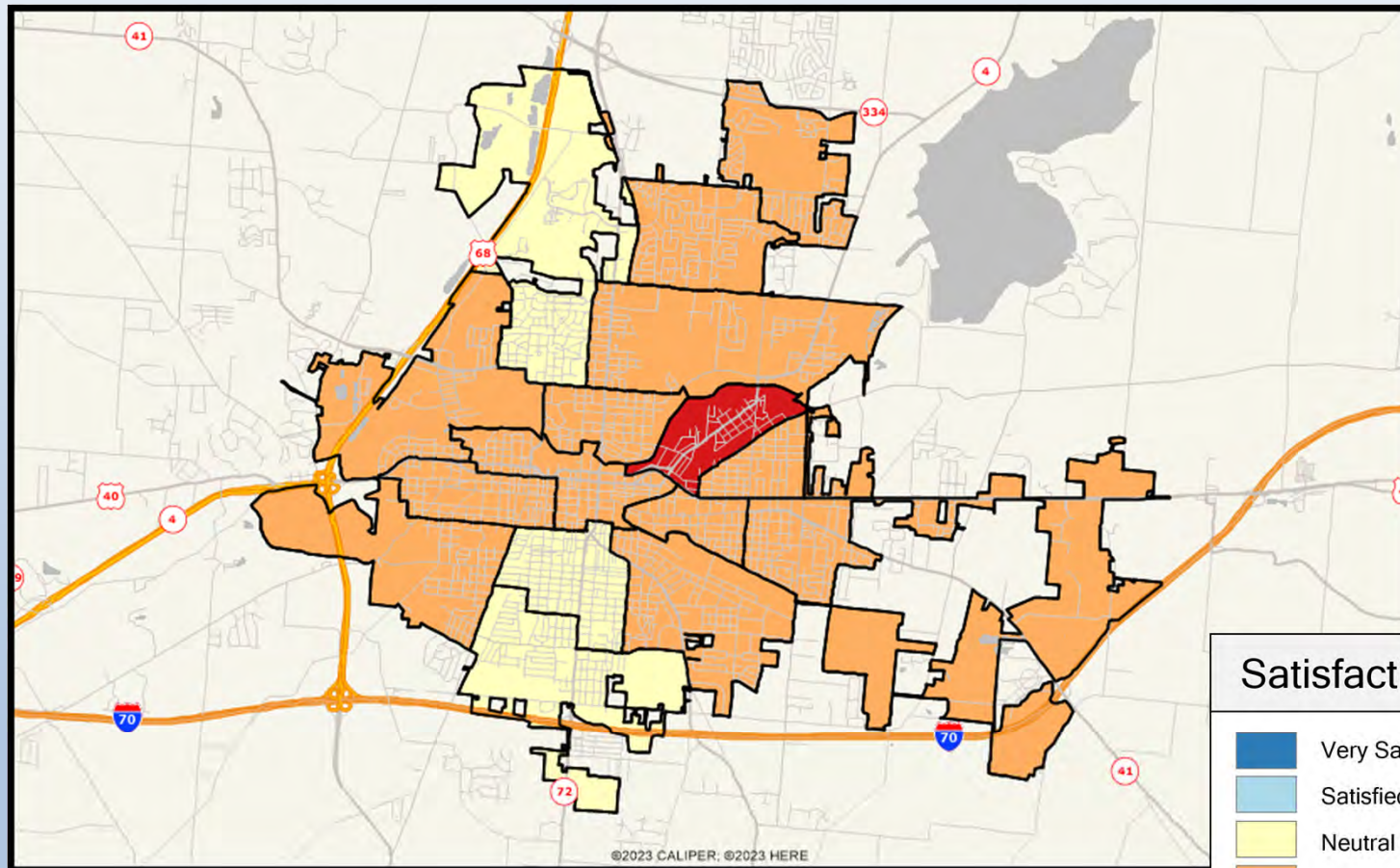


**Satisfaction**

- Very Satisfied
- Satisfied
- Neutral
- Dissatisfied
- Very Dissatisfied
- No Response


**ETC INSTITUTE**

# Q5-06. Visibility of police in neighborhoods

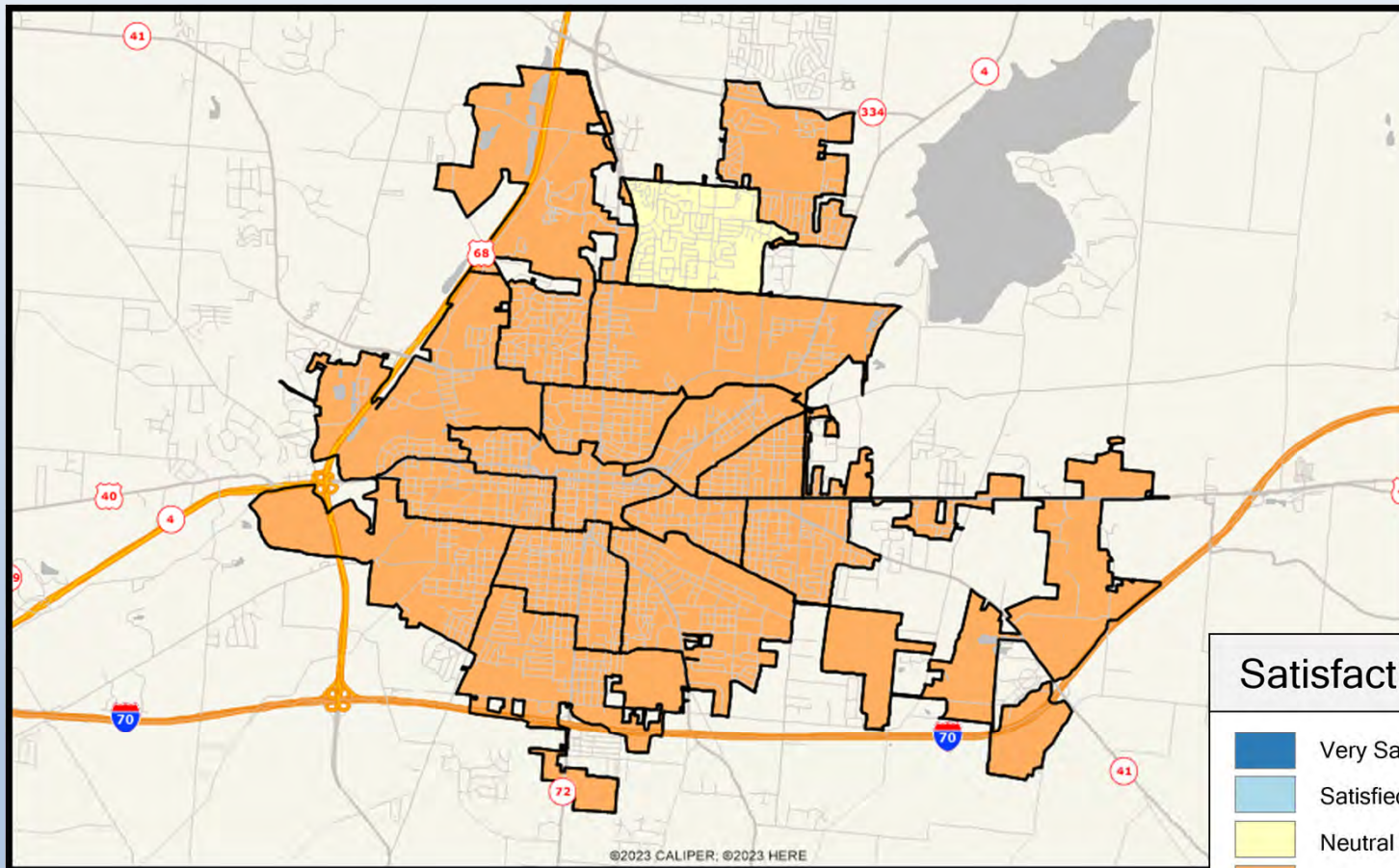


**Satisfaction**

- Very Satisfied
- Satisfied
- Neutral
- Dissatisfied
- Very Dissatisfied
- No Response



# Q7-01. Maintenance and condition of major City streets

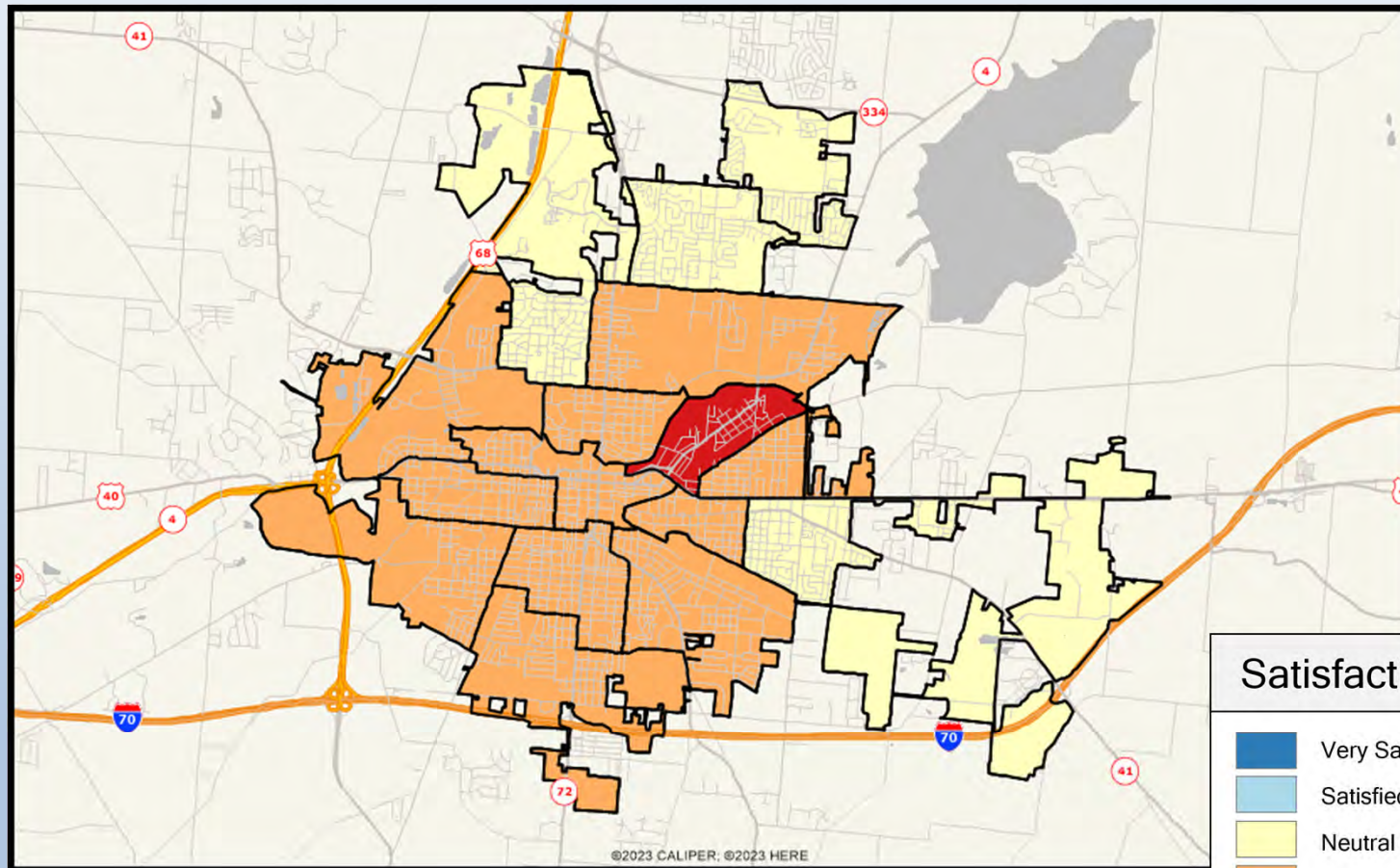


**Satisfaction**

- Very Satisfied
- Satisfied
- Neutral
- Dissatisfied
- Very Dissatisfied
- No Response

ETC INSTITUTE

# Q7-02. Maintenance and condition of streets in your neighborhood

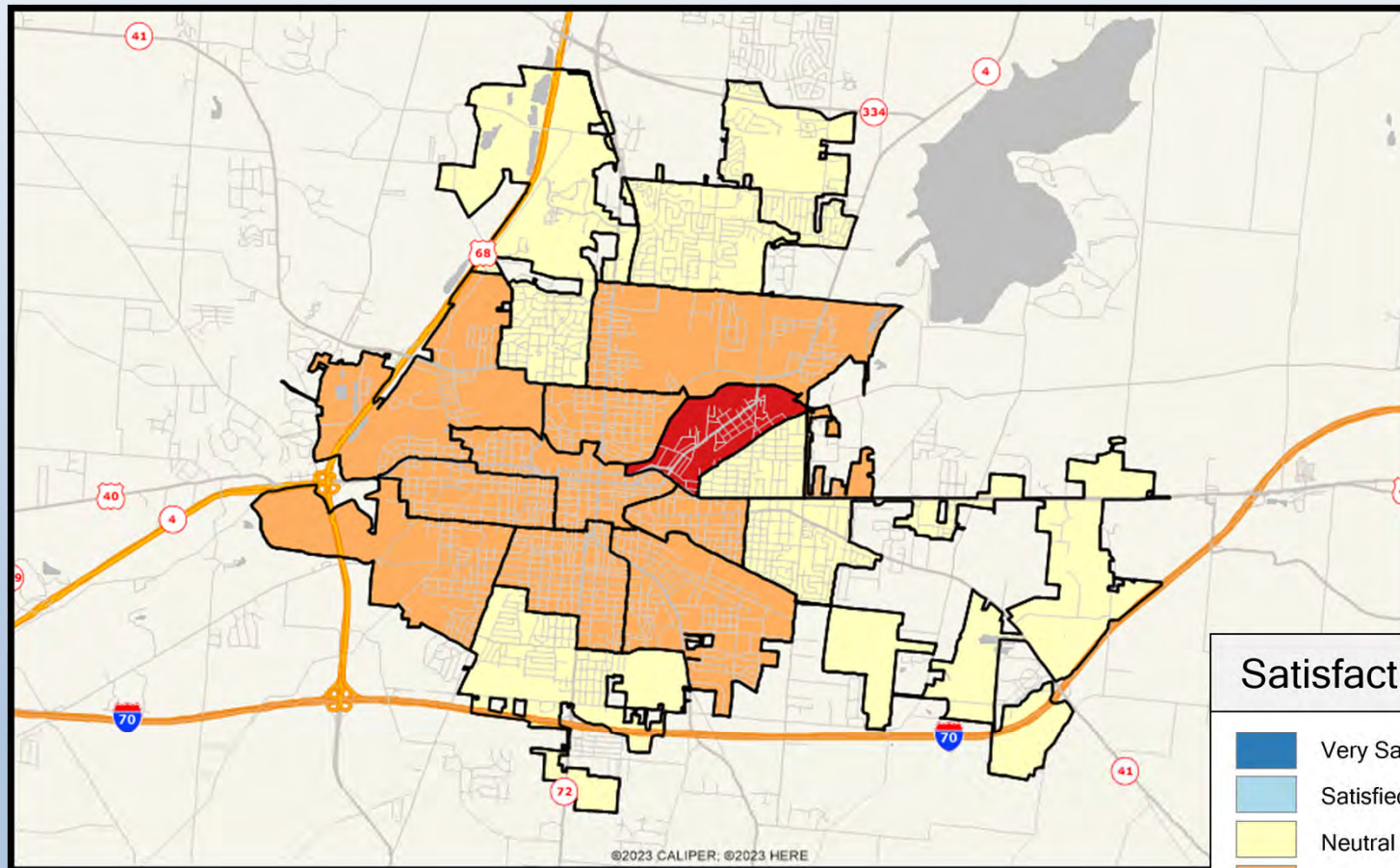


**Satisfaction**

- Very Satisfied
- Satisfied
- Neutral
- Dissatisfied
- Very Dissatisfied
- No Response

ETC INSTITUTE

# Q7-03. Cleanliness of streets and other public areas

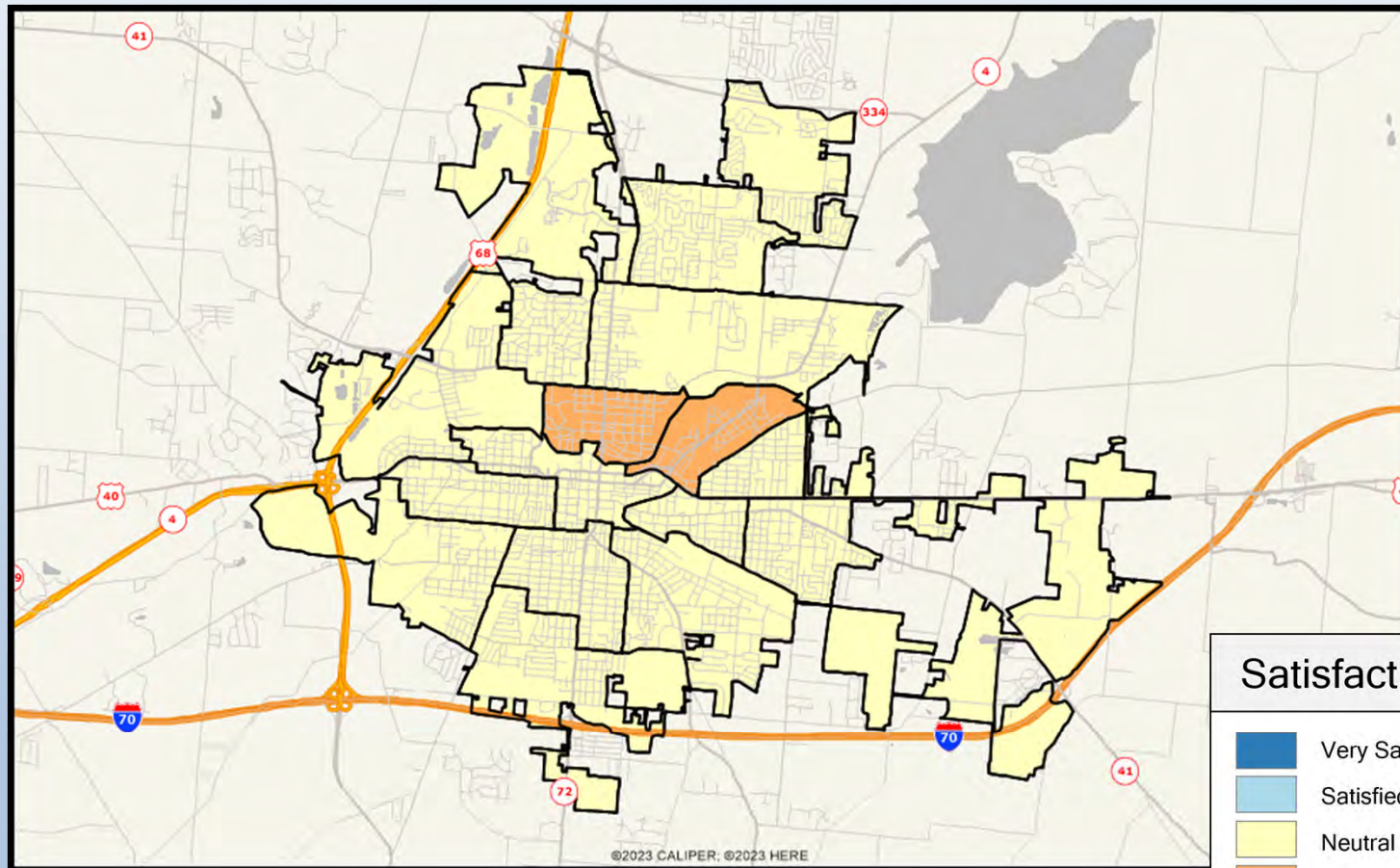


**Satisfaction**

- Very Satisfied
- Satisfied
- Neutral
- Dissatisfied
- Very Dissatisfied
- No Response

ETC INSTITUTE

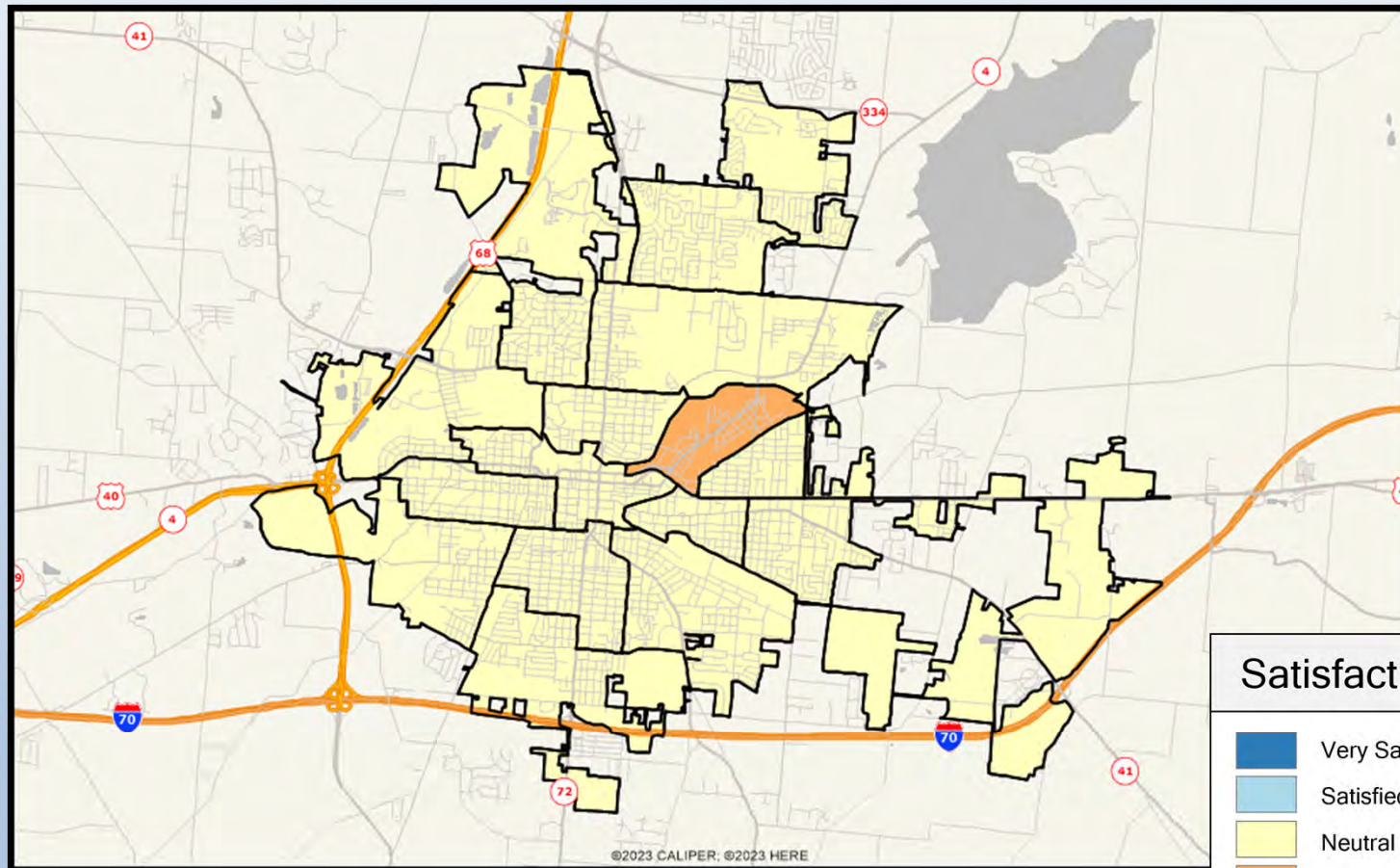
# Q7-04. Adequacy of street lighting



**Satisfaction**

- Very Satisfied
- Satisfied
- Neutral
- Dissatisfied
- Very Dissatisfied
- No Response

# Q7-05. Condition of sidewalks

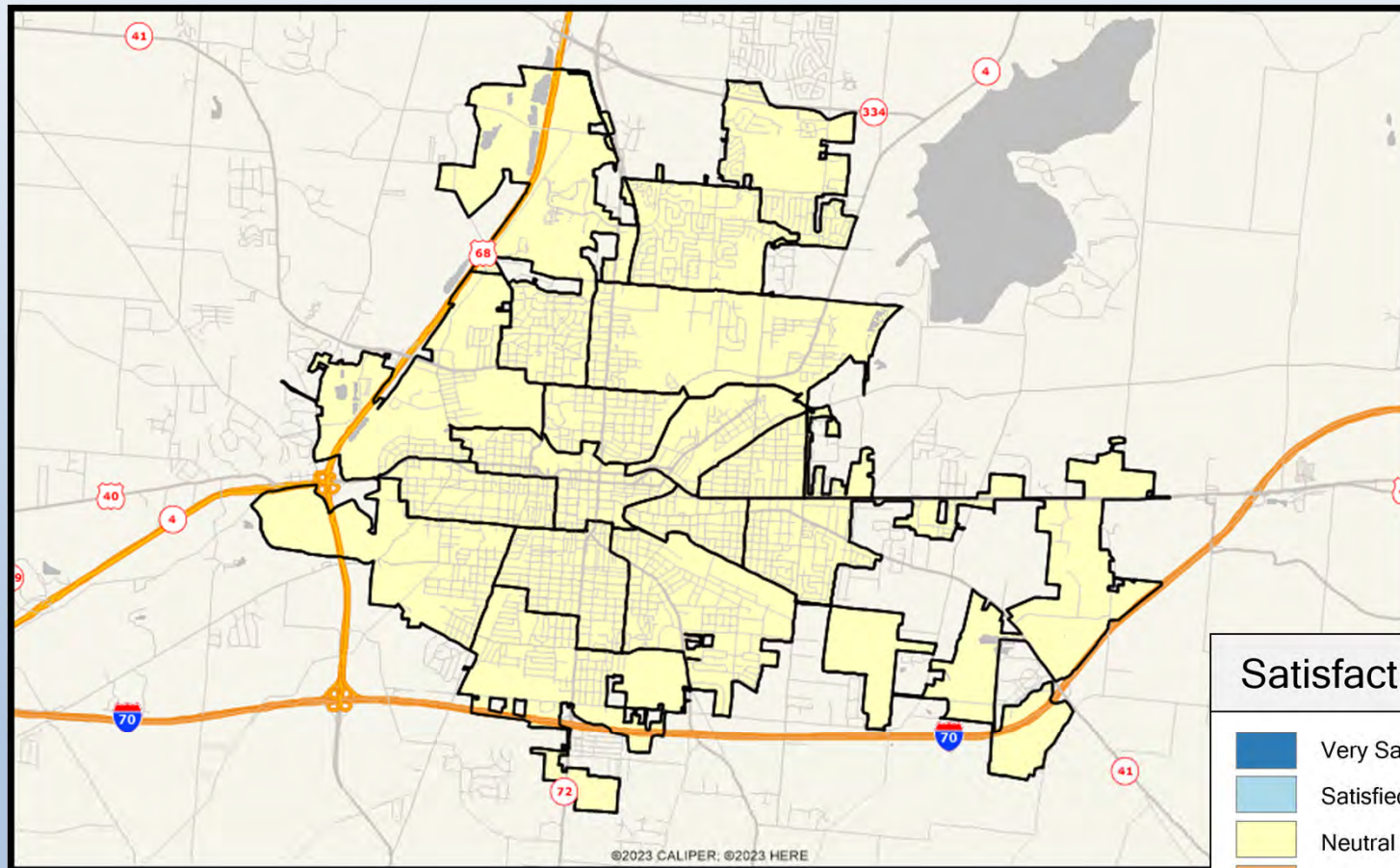


**Satisfaction**

- Very Satisfied
- Satisfied
- Neutral
- Dissatisfied
- Very Dissatisfied
- No Response

The legend for the satisfaction levels is located in the bottom right corner. It includes a color key for 'Very Satisfied' (dark blue), 'Satisfied' (light blue), 'Neutral' (yellow), 'Dissatisfied' (orange), 'Very Dissatisfied' (red), and 'No Response' (grey hatched). Below the legend is the ETC INSTITUTE logo, which consists of a stylized globe icon and the text 'ETC INSTITUTE'. To the right of the logo is a compass rose with 'N', 'S', 'E', and 'W' markers.

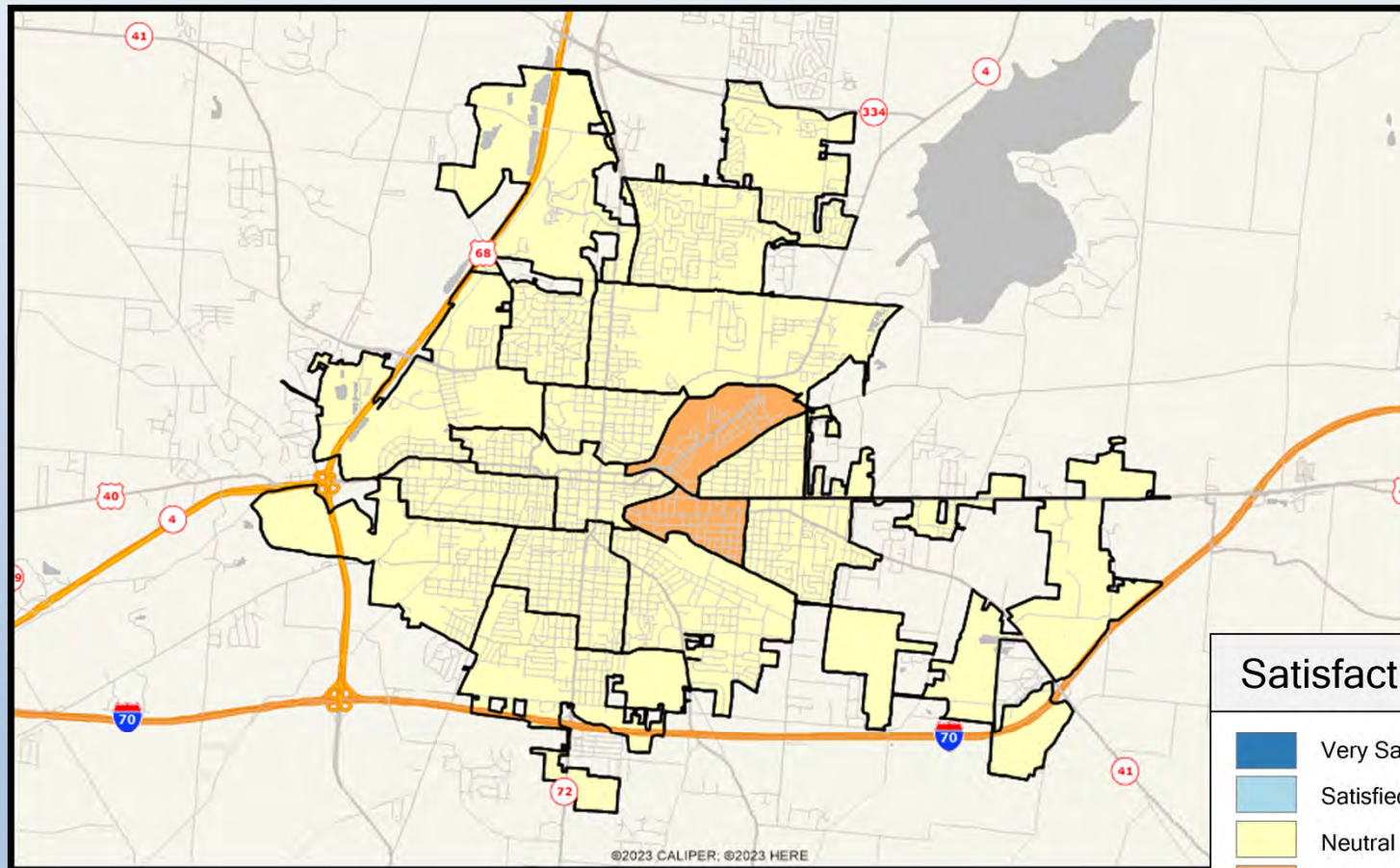
# Q7-06. Traffic signal timing



**Satisfaction**


- Very Satisfied
- Satisfied
- Neutral
- Dissatisfied
- Very Dissatisfied
- No Response

## Q7-07. Traffic flow on major City streets

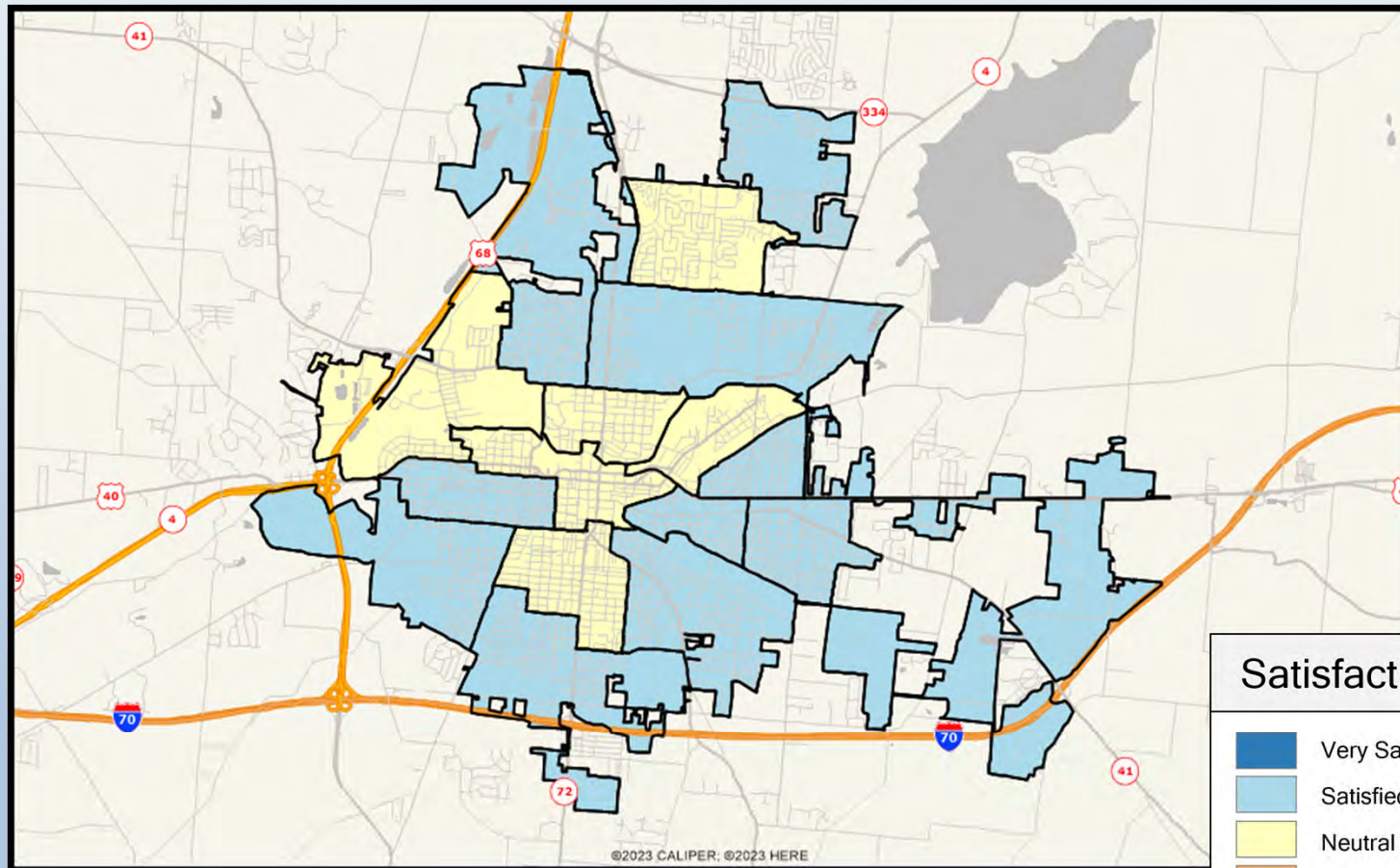


**Satisfaction**

- Very Satisfied
- Satisfied
- Neutral
- Dissatisfied
- Very Dissatisfied
- No Response



# Q9-01. Maintenance of City parks and sports fields

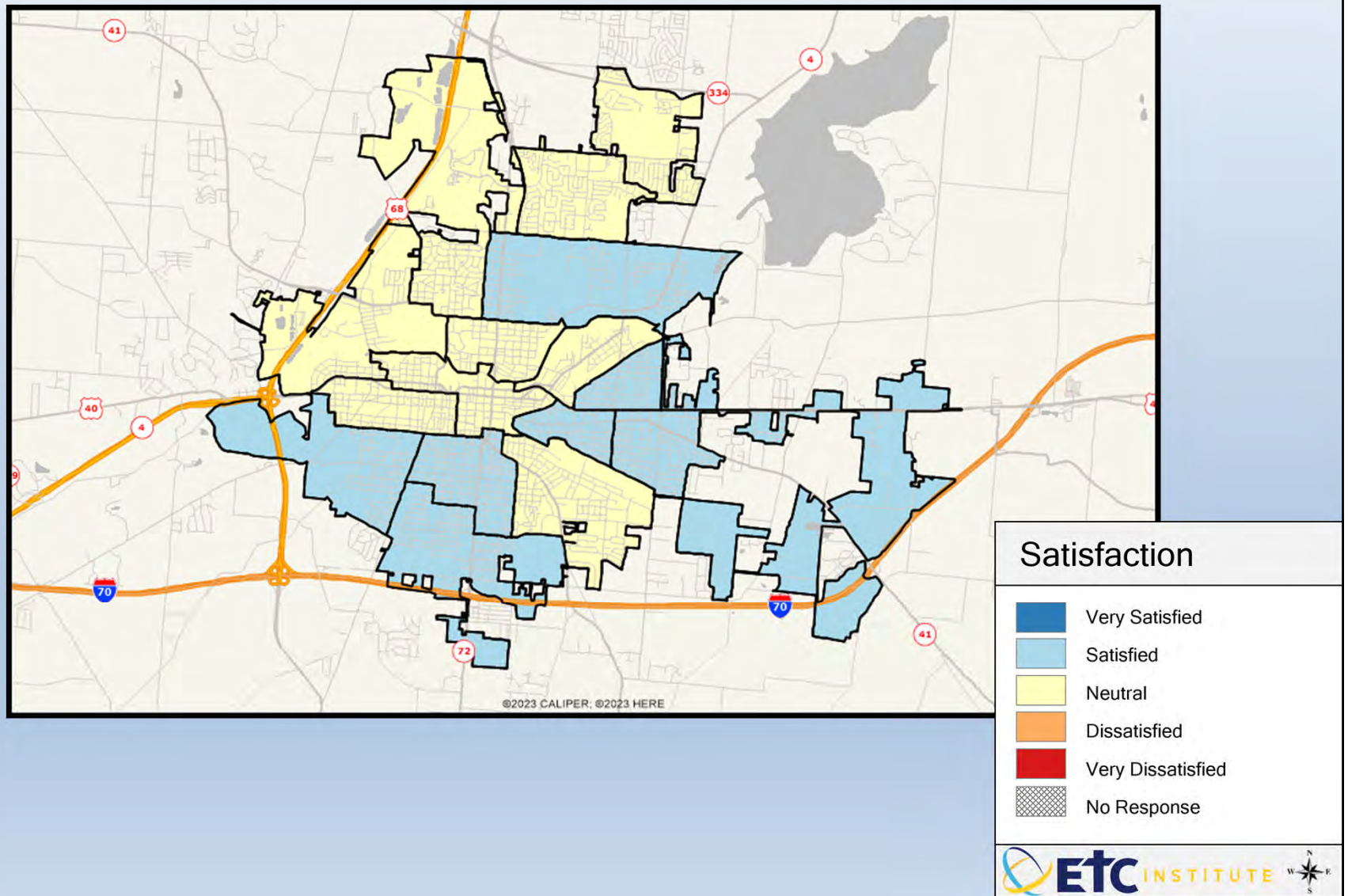


**Satisfaction**

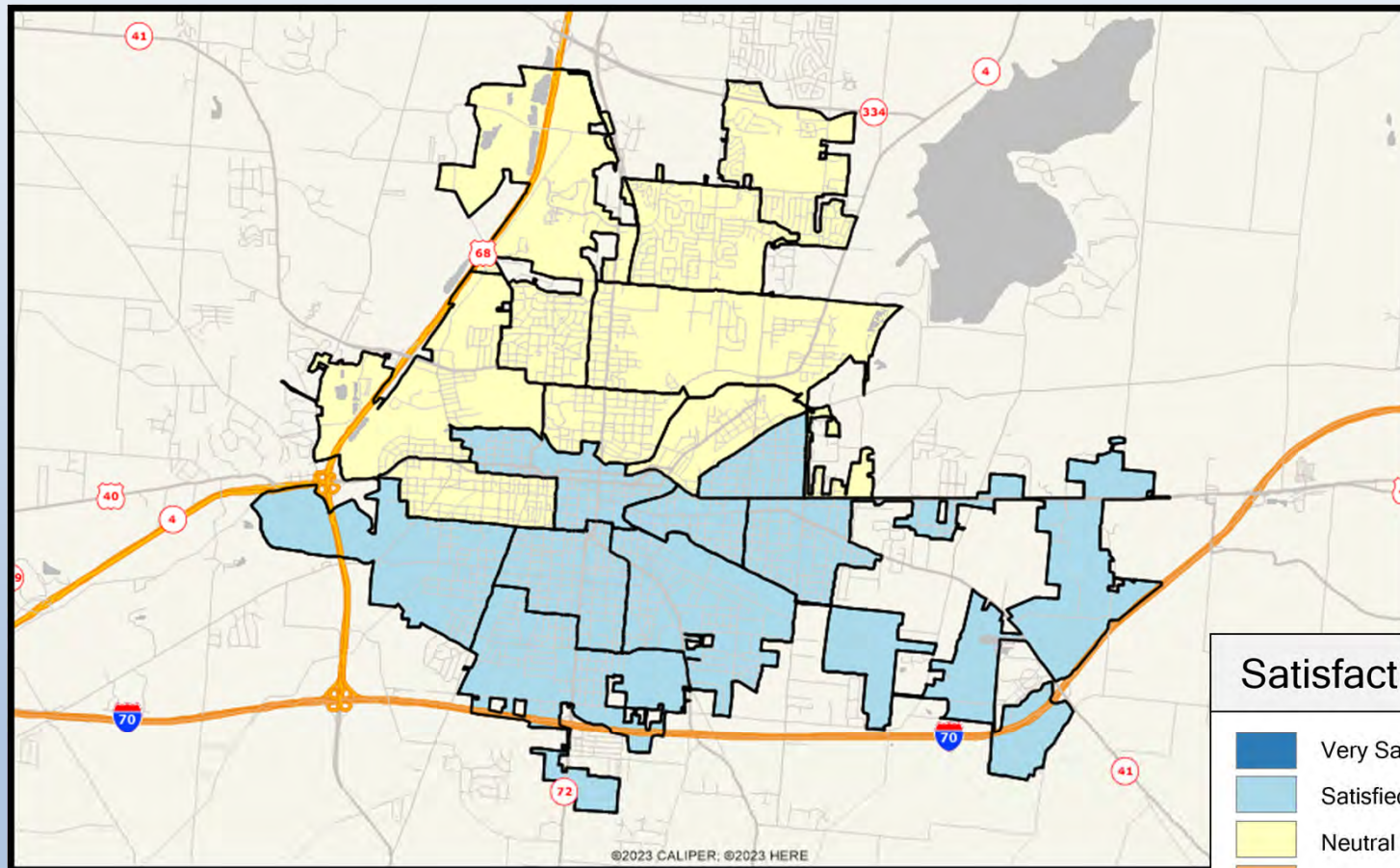
- Very Satisfied
- Satisfied
- Neutral
- Dissatisfied
- Very Dissatisfied
- No Response

**ETC INSTITUTE**

# Q9-02. Maintenance of City recreation facilities




# Q9-03. Maintenance of the City pool and splash pad

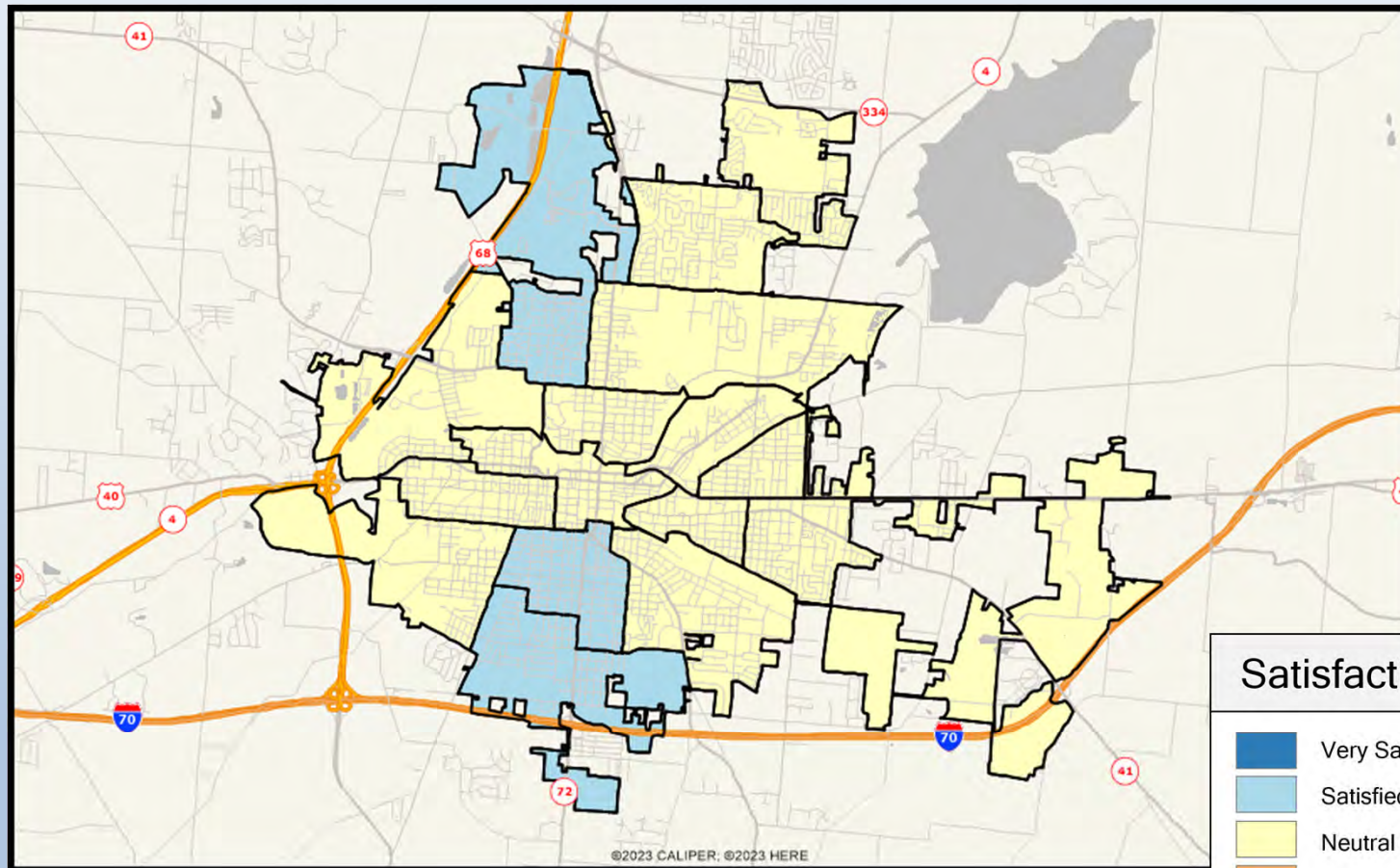


**Satisfaction**

- Very Satisfied
- Satisfied
- Neutral
- Dissatisfied
- Very Dissatisfied
- No Response

**ETC INSTITUTE** 

# Q9-04. Maintenance and condition of walking and biking trails

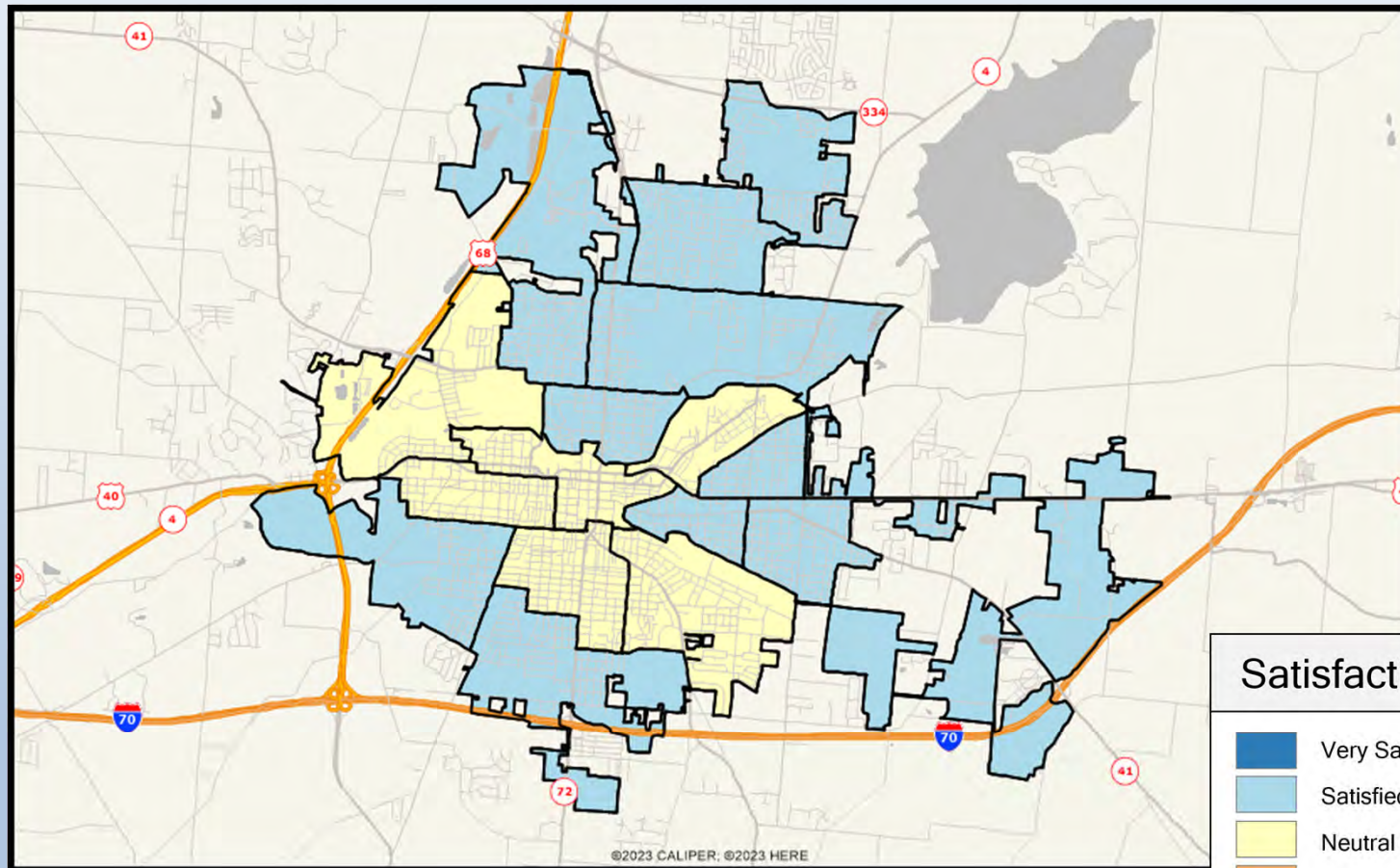


**Satisfaction**

- Very Satisfied
- Satisfied
- Neutral
- Dissatisfied
- Very Dissatisfied
- No Response

**ETC INSTITUTE**

# Q9-05. Availability of walking and biking trails



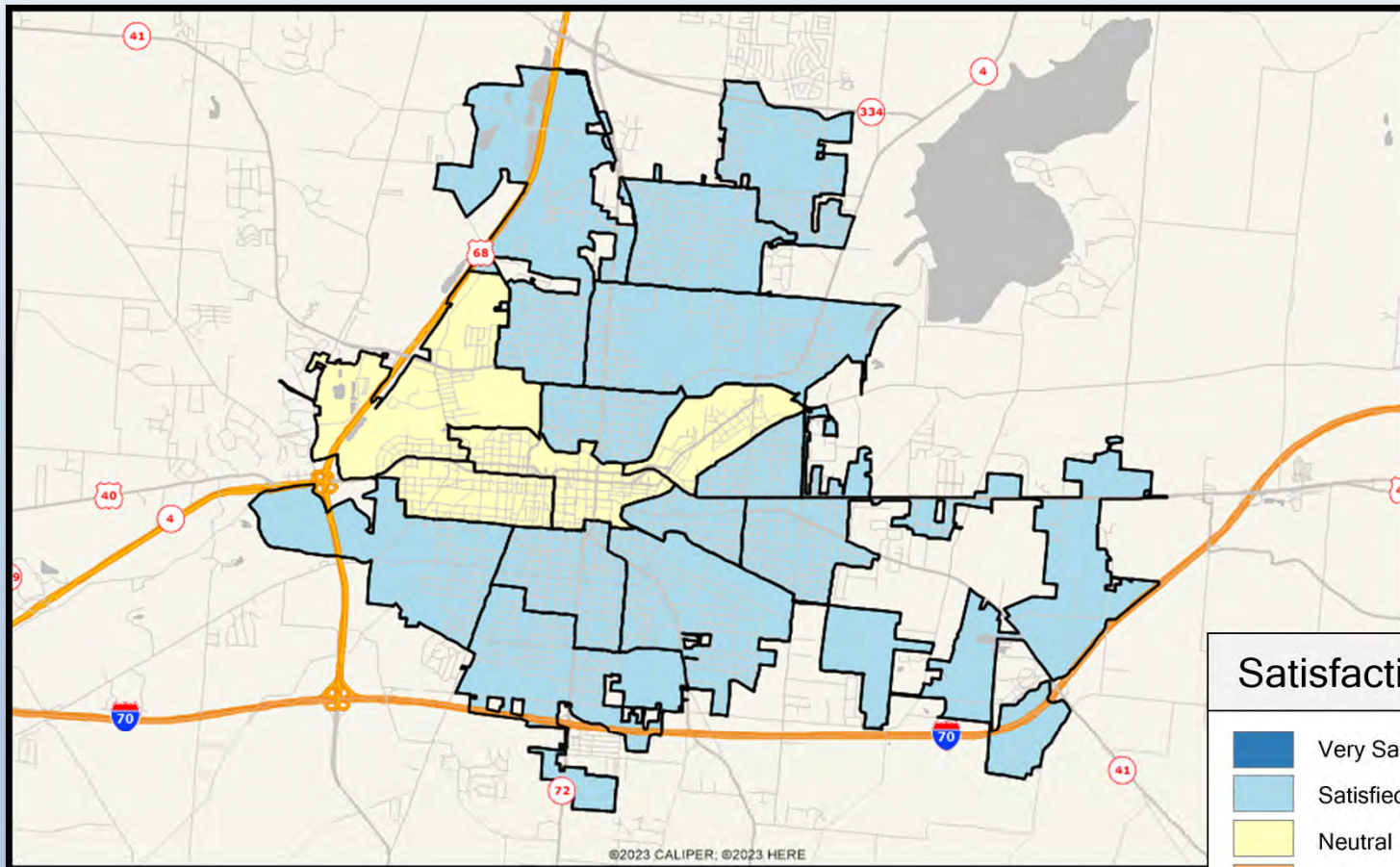
**Satisfaction**

- Very Satisfied
- Satisfied
- Neutral
- Dissatisfied
- Very Dissatisfied
- No Response

ETC INSTITUTE

©2023 CALIPER, ©2023 HERE

# Q9-06. QAvailability of parks and sports fields

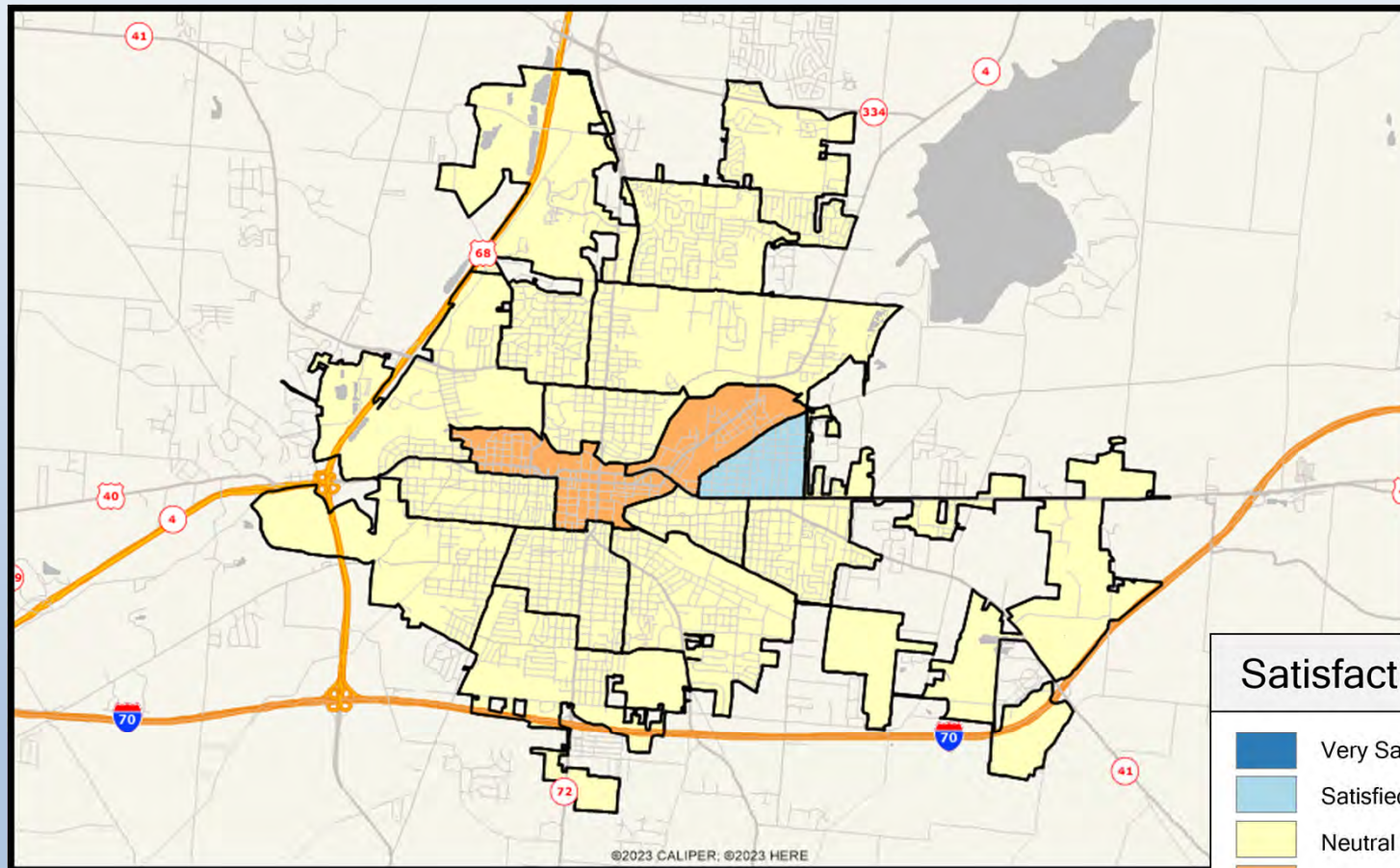


**Satisfaction**

- Very Satisfied
- Satisfied
- Neutral
- Dissatisfied
- Very Dissatisfied
- No Response

**ETC INSTITUTE**

# Q9-07. Quality of youth sports and recreation programs

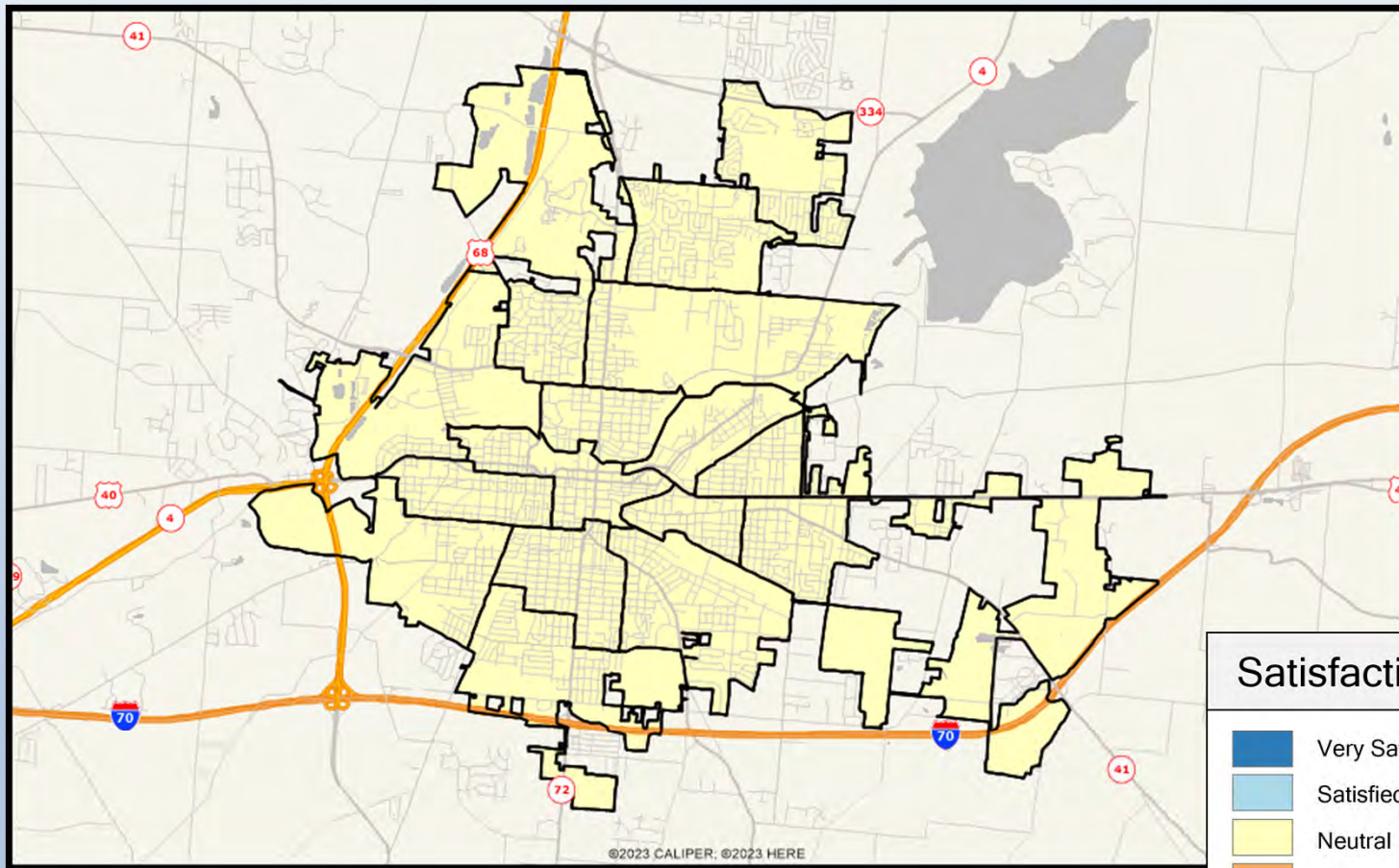


**Satisfaction**

- Very Satisfied
- Satisfied
- Neutral
- Dissatisfied
- Very Dissatisfied
- No Response

ETC INSTITUTE

# Q9-08. Quality of adult sports programs

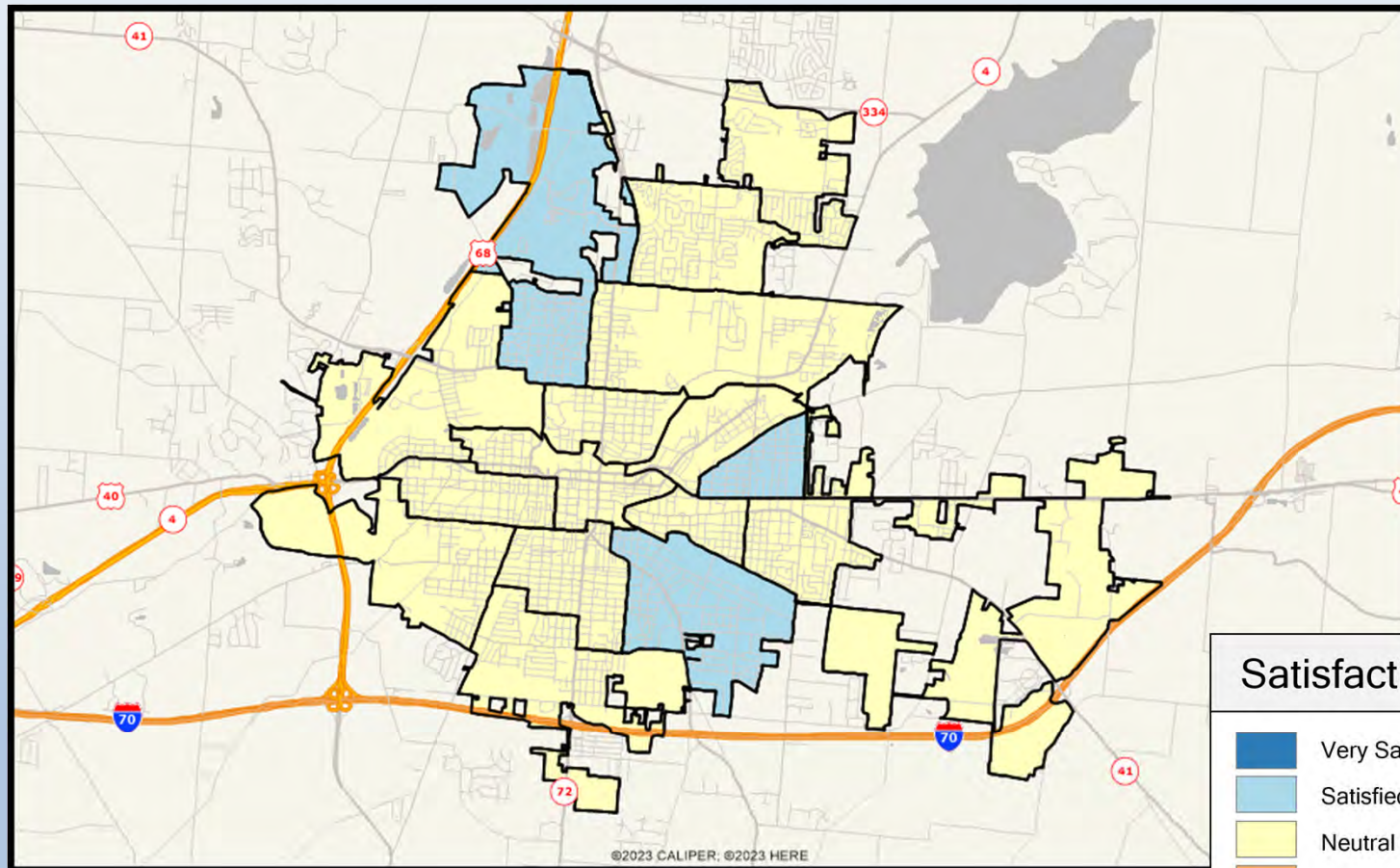


**Satisfaction**

- Very Satisfied
- Satisfied
- Neutral
- Dissatisfied
- Very Dissatisfied
- No Response

ETC INSTITUTE

# Q9-09. Ease of registering for programs



**Satisfaction**

- Very Satisfied
- Satisfied
- Neutral
- Dissatisfied
- Very Dissatisfied
- No Response