

Appendix D – Public Outreach

SP1.0 Introduction

To kickoff the update of Springfield-Beckley Municipal Airport's master plan, a visioning session was held on September 27 at the City of Springfield's offices. The visioning session resulted in draft mission statements, vision statement and planning guiding principles for update. (Photos of meeting notes are attached.)

Attendees included the following:

- Jim Bodenmiller, City Manager
- Tom Franzen, Assistant City Manager
- Bryan Heck, Deputy City Manager
- Col. John Knabel, OANG
Don Smith, Airport Manager
- Chris Snyder, Woolpert
- Maria Muia, Woolpert
- Stephanie Tresso, MurphyEpson.

SP1.1 Meeting Notes

Introductions, Overview

After introductions, Project Manager Chris Snyder gave a brief update on the master plan update process and schedule. Facilitator Stephanie Tresso gave an overview of the visioning session.

Where Are We Now?

The first discussion session analyzed where the Airport is today – what it is good at, what it could improve upon, adjectives or adverbs to describe the Airport, and where attendees would like to see the Airport in 20 years.

Mission Statement

Stephanie and Maria provided an overview and sharing of sample mission statements. The second discussion session focused on creating a new mission statement for the Airport. Draft mission statement and tested against the following criteria to ensure it would meet the Airport's needs into the future:

- states what the airport does.
- answers why the airport does it.
- defines who the airport does it for.
- builds off the airport's competitive advantage.
- centers around satisfying airport users' needs.
- permits understanding.
- reflects reality.
- motivates employees' high performance.

After several iterations, the group agreed on further review of two draft mission statements:

- To provide a quality environment that meets that needs of the Airport's diverse customer base; and contributes to the economic health of the region.

- To continue providing first class services and facilities that meet diverse customer needs and contribute to economic development

Vision Statement

After a short break, the group reconvened to develop a vision statement for the Airport. Again Stephanie and Maria gave an overview and shared samples. Draft vision statements was developed and tested against the following criteria to ensure it would meet the Airport's needs into the future:

- articulates a vision of the airport 20 years into the future.
- builds off the airport's competitive advantage.
- centers around customer service.
- identifies the airport's future market and business strategy.
- permits understanding.
- reflects reality.
- motivates employees' high performance.

After several iterations, the group decided upon the following draft vision statement:

- To be recognized as the premier center for aviation, innovation and business development in the region

Planning Guiding Principles

Finally, the group worked to identify and articulate guiding principles for the plan update. Woolpert provided examples from other airports to use as a starting point for the group. After group discussion, the following emerged as draft planning guiding principles:

1. Focus on safety and security as the first priorities
2. Focus on ANG changes and impacts on Airport growth and development
3. Preserve space for terminal, hangar and utilities efficiently and cost-effectively
4. Provide enhancements for easy and aesthetically pleasing access points in and around the Airport
5. Use emerging technologies to increase all-weather usage of the Airport
6. Preserve investments in existing facilities and property contiguous with taxiways and aprons, for aviation purposed with airside needs

ATTN: Springfield-Beckley Municipal Airport User

RE: Airport Master Plan Project

We are completing an Airport Master Plan for Springfield-Beckley Municipal Airport and would appreciate your assistance in charting our course for the future. As an airport user, it is important for us to understand your needs and use of the facility. I understand you are very busy but I am hopeful the time you offer will come back to benefit you and our community as we move forward.

As stewards of this public investment, we are striving to meet the needs of the aviation community while making prudent financial decisions. We have developed an online, simple survey located at <https://www.surveymonkey.com/r/SGH-Tenant-User-Survey>. This is designed to identify and evaluate various aspects and services of the Springfield-Beckley Municipal Airport as we work toward these goals. Please answer all applicable questions to the very best of your knowledge. If you would like to make comments on any of the questions, please feel free to do so in the appropriate sections.

The City of Springfield would also like to keep you up to date on the master plan process and airport news through email, thus we are requesting your contact information and email address at the completion of the survey. We will not sell your email address or use for any purpose other than the City of Springfield and Springfield Beckley Airport news and communication. However, if you would prefer to remain anonymous with your survey responses, you can complete the online survey and simply email your address to me at dsmith2@springfieldohio.gov.

If you would prefer to complete a handwritten survey, they are available at the airport or by emailing me at dsmith2@springfieldohio.gov.

Thank you again for taking the time to assist in this project. We are looking to have all survey responses completed **before February 10, 2017**. Please submit the survey before this time so that your INPUT can be included. We are counting on it.

Sincerely,

Don Smith
Airport Manager

#1



INCOMPLETE

Collector: Web Link 1 (Web Link)
Started: Saturday, January 21, 2017 4:15:58 PM
Last Modified: Saturday, January 21, 2017 4:18:28 PM
Time Spent: 00:02:29
IP Address: 65.186.17.230

PAGE 1: Tenant User Survey

Q1: Are you a current airport tenant or based pilot? (Please check one)	Yes
Q2: Do you currently rent an aircraft from the airport or do you own your own aircraft? (Please check one)	Own
Q3: Do you use general aviation and/or corporate aircraft as a transportation method for business or pleasure?	Personal
Q4: Where is/are your aircraft based?	SGH, I54

PAGE 2: Runway Feedback

Q5: Please tell us about the aircraft that you currently use at SGH.	
Current Aircraft 1	
Make/model	PA24
Estimated Trips/year	12
Furthest destination	PIT
Q6: What are runway length preferences for SGH's primary runway for aircraft that you currently use?	
Current Aircraft 1	Runway Length Preferred <9k feet
Q7: What are the visibility minimums needed for SGH's primary runway for aircraft that you currently use?	
Current Aircraft 1	Visibility Needed 1 mile
Q8: Do you use the crosswind runway at SGH?	Yes
Q9: If you do use the crosswind runway, how often do you use it?	25%
Q10: If you do use the crosswind runway, what is your length preference?	5000
Q11: Do you plan to upgrade your aircraft in the future?	No, If so, what runway length will you need? no
Q12: Is there any other information or comments related to the responses that you provided to Questions 5-10?	<i>Respondent skipped this question</i>

PAGE 3: Airport Features and Amenities

Q13: How do you rate the following line services? (Please check one per service)	<i>Respondent skipped this question</i>
Q14: How would you rate aircraft maintenance services? (Please check one per service)	<i>Respondent skipped this question</i>
Q15: How would you rate rental aircraft at the airport? (Please check one per line)	<i>Respondent skipped this question</i>
Q16: How would you rate aircraft instruction at the airport? (Please check one per line)	<i>Respondent skipped this question</i>
Q17: How would you rate the fueling at the airport? (Please check one per line.)	<i>Respondent skipped this question</i>
Q18: How do you rate the airport facilities and management? (Please check one per line.)	<i>Respondent skipped this question</i>
Q19: As compared to other airports of similar size, how do you rate the quality of service you receive at Springfield-Beckley Airport? (Please check one box.)	<i>Respondent skipped this question</i>
Q20: Are there any other comments that you would like to share about the airport or staff?	<i>Respondent skipped this question</i>
Q21: May we contact you to follow up about your responses?	<i>Respondent skipped this question</i>
Q22: Contact Information It is optional to provide your contact information. If you choose to share it, you will receive information related to the Master Plan update and about public meetings you can attend.	<i>Respondent skipped this question</i>

#2

**COMPLETE****Collector:** Web Link 1 (Web Link)**Started:** Saturday, January 21, 2017 7:48:19 PM**Last Modified:** Saturday, January 21, 2017 8:27:18 PM**Time Spent:** 00:38:58**IP Address:** 65.29.216.239

PAGE 1: Tenant User Survey

Q1: Are you a current airport tenant or based pilot? (Please check one)	Yes
Q2: Do you currently rent an aircraft from the airport or do you own your own aircraft? (Please check one)	Own
Q3: Do you use general aviation and/or corporate aircraft as a transportation method for business or pleasure?	Business
Q4: Where is/are your aircraft based?	KSGH

PAGE 2: Runway Feedback

Q5: Please tell us about the aircraft that you currently use at SGH.

Current Aircraft 1	Piper Comanche
Make/model	Piper Comanche
Estimated Trips/year	30
Furthest destination	Colorado
Current Aircraft 2	Piper Aerostar
Make/model	Piper Aerostar
Estimated Trips/year	20
Furthest destination	California

Q6: What are runway length preferences for SGH's primary runway for aircraft that you currently use?

Current Aircraft 1	Runway Length Preferred <9k feet
Current Aircraft 2	Runway Length Preferred <9k feet

Q7: What are the visibility minimums needed for SGH's primary runway for aircraft that you currently use?

Current Aircraft 1	Visibility Needed 1/2 mile
Current Aircraft 2	Visibility Needed 1/2 mile

Q8: Do you use the crosswind runway at SGH? Yes**Q9: If you do use the crosswind runway, how often do you use it?** 20%

Q10: If you do use the crosswind runway, what is your length preference?	greater than 4500 ft
Q11: Do you plan to upgrade your aircraft in the future?	Yes,
	If so, what runway length will you need? 4500 ft
Q12: Is there any other information or comments related to the responses that you provided to Questions 5-10?	<i>Respondent skipped this question</i>

PAGE 3: Airport Features and Amenities

Q13: How do you rate the following line services? (Please check one per service)

Efficiency/Timeliness	Fair
Friendliness	Good
Preheats	Poor
Other (please specify)	Why passengers have to use an outside portapot after hours is unacceptable. Pilots can't be trusted to use the terminal building?

Q14: How would you rate aircraft maintenance services? (Please check one per service)

Cost	Fair
Quality	Poor
Availability	Good

Q15: How would you rate rental aircraft at the airport? (Please check one per line)

Availability	Poor
Quality	Fair

Q16: How would you rate aircraft instruction at the airport? (Please check one per line)

Availability of instructors	Poor
Efficiency/Timeliness	Fair

Q17: How would you rate the fueling at the airport? (Please check one per line.)

Competitiveness of cost of 100LL	Fair
Availability of 100LL	Good
Reliability of self-service 100LL	Excellent
Availability of Jet A	NA
Other (please specify), Comments	Survey will not let one put the same rating for different lines. Tenants should have better fuel discount. Many fly to other airports to fuel their aircraft.

Q18: How do you rate the airport facilities and management? (Please check one per line.)

Runway	Good
Hangars	Poor
Other (please specify), Comments	Survey will not let one put the same rating for different lines. Makes it impossible to make a meaningful response. Present hangars are in awful shape and zero maintenance/minimal repairs has been performed over the past decades all the while increasing the rent! And why are hangars rented to people without aircraft. The large hangar in C row has had no aircraft activity in 20 years!

Q19: As compared to other airports of similar size, how do you rate the quality of service you receive at Springfield-Beckley Airport? (Please check one box.)

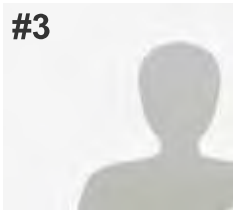
Less quality service

Q20: Are there any other comments that you would like to share about the airport or staff?*Respondent skipped this question***Q21: May we contact you to follow up about your responses?**

No

Q22: Contact InformationIt is optional to provide your contact information. If you choose to share it, you will receive information related to the Master Plan update and about public meetings you can attend.*Respondent skipped this question*

#3

**INCOMPLETE****Collector:** Web Link 1 (Web Link)**Started:** Saturday, January 21, 2017 11:11:56 PM**Last Modified:** Saturday, January 21, 2017 11:21:24 PM**Time Spent:** 00:09:27**IP Address:** 69.81.84.32

PAGE 1: Tenant User Survey

Q1: Are you a current airport tenant or based pilot?
(Please check one) Yes

Q2: Do you currently rent an aircraft from the airport or do you own your own aircraft? (Please check one) Own

Q3: Do you use general aviation and/or corporate aircraft as a transportation method for business or pleasure? Personal

Q4: Where is/are your aircraft based? SGH

PAGE 2: Runway Feedback

Q5: Please tell us about the aircraft that you currently use at SGH.

Current Aircraft 1

Make/model Piper PA-24-250

Estimated Trips/year 20

Furthest destination RNT

Q6: What are runway length preferences for SGH's primary runway for aircraft that you currently use?

Current Aircraft 1 Runway Length Preferred 9k feet

Q7: What are the visibility minimums needed for SGH's primary runway for aircraft that you currently use?

Current Aircraft 1 Visibility Needed 1/2 mile

Q8: Do you use the crosswind runway at SGH? Yes

Q9: If you do use the crosswind runway, how often do you use it? When the wind favors it

Q10: If you do use the crosswind runway, what is your length preference? 5500 feet

Q11: Do you plan to upgrade your aircraft in the future? Yes,
If so, what runway length will you need?
Same as above

Q12: Is there any other information or comments related to the responses that you provided to Questions 5-10?

Respondent skipped this question

PAGE 3: Airport Features and Amenities

Q13: How do you rate the following line services? (Please check one per service)

Respondent skipped this question

Q14: How would you rate aircraft maintenance services? (Please check one per service)

Respondent skipped this question

Q15: How would you rate rental aircraft at the airport? (Please check one per line)

Respondent skipped this question

Q16: How would you rate aircraft instruction at the airport? (Please check one per line)

Respondent skipped this question

Q17: How would you rate the fueling at the airport? (Please check one per line.)

Respondent skipped this question

Q18: How do you rate the airport facilities and management? (Please check one per line.)

Respondent skipped this question

Q19: As compared to other airports of similar size, how do you rate the quality of service you receive at Springfield-Beckley Airport? (Please check one box.)

Respondent skipped this question

Q20: Are there any other comments that you would like to share about the airport or staff?

Respondent skipped this question

Q21: May we contact you to follow up about your responses?

Respondent skipped this question

Q22: Contact Information It is optional to provide your contact information. If you choose to share it, you will receive information related to the Master Plan update and about public meetings you can attend.

Respondent skipped this question

#4

**COMPLETE****Collector:** Web Link 1 (Web Link)**Started:** Saturday, January 21, 2017 11:33:01 PM**Last Modified:** Saturday, January 21, 2017 11:41:22 PM**Time Spent:** 00:08:20**IP Address:** 69.81.84.32

PAGE 1: Tenant User Survey

Q1: Are you a current airport tenant or based pilot?
(Please check one) Yes

Q2: Do you currently rent an aircraft from the airport or do you own your own aircraft? (Please check one) Own

Q3: Do you use general aviation and/or corporate aircraft as a transportation method for business or pleasure? Personal

Q4: Where is/are your aircraft based? SGH

PAGE 2: Runway Feedback

Q5: Please tell us about the aircraft that you currently use at SGH.

Current Aircraft 1

Make/model Piper PA-24-250

Estimated Trips/year 20

Furthest destination RNT

Q6: What are runway length preferences for SGH's primary runway for aircraft that you currently use?

Current Aircraft 1 Runway Length Preferred 9k feet

Q7: What are the visibility minimums needed for SGH's primary runway for aircraft that you currently use?

Current Aircraft 1 Visibility Needed 1/2 mile

Q8: Do you use the crosswind runway at SGH? Yes

Q9: If you do use the crosswind runway, how often do you use it? whenever the wind favors it

Q10: If you do use the crosswind runway, what is your length preference? 5500 feet

Q11: Do you plan to upgrade your aircraft in the future? Yes,
If so, what runway length will you need?
Avionics don't affect runway length

Q12: Is there any other information or comments related to the responses that you provided to Questions 5-10?

Respondent skipped this question

PAGE 3: Airport Features and Amenities

Q13: How do you rate the following line services? (Please check one per service)

Hours of Operation	Fair
Efficiency/Timeliness	Good
Friendliness	Excellent
Preheats	NA

Q14: How would you rate aircraft maintenance services? (Please check one per service)

Cost	Fair
Quality	Good

Q15: How would you rate rental aircraft at the airport? (Please check one per line)

Availability	NA
--------------	----

Q16: How would you rate aircraft instruction at the airport? (Please check one per line)

Availability of instructors	NA
-----------------------------	----

Q17: How would you rate the fueling at the airport? (Please check one per line.)

Competitiveness of cost of 100LL	Poor
Competitiveness of cost of Jet A	NA
Availability of 100LL	Good
Reliability of self-service 100LL	Excellent

Q18: How do you rate the airport facilities and management? (Please check one per line.)

Runway	Good
Taxiways	Excellent
NAVAIDS	Fair
Hangars	Poor
Pilot Supplies	NA
Other (please specify), Comments	The survey won't allow me to rate two services the same, so you only get 5 answers.

Q19: As compared to other airports of similar size, how do you rate the quality of service you receive at Springfield-Beckley Airport? (Please check one box.)

Less quality service,
Comments
The ILS for runway 24 has been off the air for what seems like a year or more.

Q20: Are there any other comments that you would like to share about the airport or staff?

The T-hangars are decrepit and the taxiways to the T-hangars are crumbling in places (potential for prop damage).

Q21: May we contact you to follow up about your responses?

Yes

Q22: Contact Information It is optional to provide your contact information. If you choose to share it, you will receive information related to the Master Plan update and about public meetings you can attend.

Name

Email Address

Phone Number

#5

**COMPLETE****Collector:** Web Link 1 (Web Link)**Started:** Monday, January 23, 2017 5:10:48 PM**Last Modified:** Monday, January 23, 2017 5:33:54 PM**Time Spent:** 00:23:06**IP Address:** 74.140.153.254**PAGE 1: Tenant User Survey**

Q1: Are you a current airport tenant or based pilot?
(Please check one) Yes

Q2: Do you currently rent an aircraft from the airport or do you own your own aircraft? (Please check one) Own

Q3: Do you use general aviation and/or corporate aircraft as a transportation method for business or pleasure? Personal

Q4: Where is/are your aircraft based? KSGH

PAGE 2: Runway Feedback**Q5: Please tell us about the aircraft that you currently use at SGH.**

Current Aircraft 1

Make/model Cessna 120

Estimated Trips/year 50

Furthest destination 200 NM

Current Aircraft 2 N55409

Make/model Cessna 172

Estimated Trips/year Ten

Furthest destination 300 NM

Q6: What are runway length preferences for SGH's primary runway for aircraft that you currently use?

Current Aircraft 1 Runway Length Preferred <9k feet

Current Aircraft 2 Runway Length Preferred <9k feet

Q7: What are the visibility minimums needed for SGH's primary runway for aircraft that you currently use?

Current Aircraft 1 Visibility Needed 1 mile

Current Aircraft 2 Visibility Needed 1/2 mile

Q8: Do you use the crosswind runway at SGH? Yes**Q9: If you do use the crosswind runway, how often do you use it?** 30% of the time

Q10: If you do use the crosswind runway, what is your length preference?	4,000 ft is always enough
Q11: Do you plan to upgrade your aircraft in the future?	Yes, If so, what runway length will you need? 4,000 ft will be long enough
Q12: Is there any other information or comments related to the responses that you provided to Questions 5-10?	No

PAGE 3: Airport Features and Amenities

Q13: How do you rate the following line services? (Please check one per service)

Hours of Operation	Good
Other (please specify)	Survey won't allow answers to each above area

Q14: How would you rate aircraft maintenance services? (Please check one per service)

Cost	NA
------	----

Q15: How would you rate rental aircraft at the airport? (Please check one per line)

Availability	NA
--------------	----

Q16: How would you rate aircraft instruction at the airport? (Please check one per line)

Availability of instructors	NA
-----------------------------	----

Q17: How would you rate the fueling at the airport? (Please check one per line.)

Availability of 100LL	Excellent
Reliability of self-service 100LL	Good

Q18: How do you rate the airport facilities and management? (Please check one per line.)

Hangars	Poor
Airport Management/Personnel	Good
Other (please specify), Comments	Hangar rent should not have been increased recently due to roof leaks and doors very hard to operate. If the above were corrected then the increase would have been acceptable.

Q19: As compared to other airports of similar size, how do you rate the quality of service you receive at Springfield-Beckley Airport? (Please check one box.)

Less quality service,
Comments
Poor snow removal in front of hangar doors to common taxiways.

Q20: Are there any other comments that you would like to share about the airport or staff?

Respondent skipped this question

Q21: May we contact you to follow up about your responses?

Yes

Q22: Contact Information It is optional to provide your contact information. If you choose to share it, you will receive information related to the Master Plan update and about public meetings you can attend.

Name

Address

City/Town

State/Province

ZIP/Postal Code

Email Address

Phone Number

#6

**COMPLETE**

Collector: Web Link 1 (Web Link)

Started: Tuesday, January 24, 2017 7:31:13 AM

Last Modified: Tuesday, January 24, 2017 8:07:07 AM

Time Spent: 00:35:53

IP Address: 132.3.33.78

PAGE 1: Tenant User Survey

Q1: Are you a current airport tenant or based pilot? (Please check one)	Yes
Q2: Do you currently rent an aircraft from the airport or do you own your own aircraft? (Please check one)	Rent
Q3: Do you use general aviation and/or corporate aircraft as a transportation method for business or pleasure?	Personal
Q4: Where is/are your aircraft based?	KSGH

PAGE 2: Runway Feedback

Q5: Please tell us about the aircraft that you currently use at SGH.	
Current Aircraft 1	
Make/model	Sonerai II
Estimated Trips/year	55
Furthest destination	KGEO
Q6: What are runway length preferences for SGH's primary runway for aircraft that you currently use?	
Current Aircraft 1	Runway Length Preferred <9k feet, Runway Length Preferred 9k feet, Runway Length Preferred >9k feet
Q7: What are the visibility minimums needed for SGH's primary runway for aircraft that you currently use?	
Current Aircraft 1	Visibility Needed 1 mile
Q8: Do you use the crosswind runway at SGH?	Yes
Q9: If you do use the crosswind runway, how often do you use it?	when the prevailing wind favors it
Q10: If you do use the crosswind runway, what is your length preference?	6,000
Q11: Do you plan to upgrade your aircraft in the future?	Yes, If so, what runway length will you need? Same

Q12: Is there any other information or comments related to the responses that you provided to Questions 5-10? Current capacity is sufficient for my needs

PAGE 3: Airport Features and Amenities

Q13: How do you rate the following line services? (Please check one per service)

Hours of Operation	Good
Tug services	NA
Other (please specify)	Tug & Preheats are N/A, rest are "Good". Won't allow you to use a rating more than once, even on different lines

Q14: How would you rate aircraft maintenance services? (Please check one per service)

Cost	NA
------	----

Q15: How would you rate rental aircraft at the airport? (Please check one per line)

Availability	Poor
Cost	Fair
Quality	Good

Q16: How would you rate aircraft instruction at the airport? (Please check one per line)

Availability of instructors	Fair
Efficiency/Timeliness	Good
Friendliness	Poor

Q17: How would you rate the fueling at the airport? (Please check one per line.)

Competitiveness of cost of 100LL	Good
Competitiveness of cost of Jet A	NA
Other (please specify), Comments	Good for 100LL, NA for Jet A, again, won't allow you to use a rating more than once on all the lines

Q18: How do you rate the airport facilities and management? (Please check one per line.)

Runway	Good
Hangars	Fair
Internet Access	Poor
Pilot Supplies	NA
Other (please specify), Comments	Overall the airport is good as far as facilities. the terminal building could be laid out better, and there is no customer/wifi internet access. I'm in one of the old tail dragger t-hangars, giving a "fair" rating on those is probably being generous. But they do keep the plane out of the weather, even if they are falling apart.

Q19: As compared to other airports of similar size, how do you rate the quality of service you receive at Springfield-Beckley Airport? (Please check one box.)

Less quality service,
Comments
More used to airports this size having at least one Flight School working out of the terminal building with airplanes parked on the ramp.

Q20: Are there any other comments that you would like to share about the airport or staff?

Nice airport, I hate to seeing it underutilized like it is, but also understand most of the community is going to balk at spending city \$ for upgrades since a lot of the community views the airport as an unneeded rich mans playground. Letter requested responses before Jan 22. The metered postage was dated 1/18, postmarked 1/19 (Indianapolis) and was delivered 1/21; and who is David Maxwell (letter was addressed to him but mailed to me)

Q21: May we contact you to follow up about your responses?

Yes

Q22: Contact Information It is optional to provide your contact information. If you choose to share it, you will receive information related to the Master Plan update and about public meetings you can attend.

Name

Company

Address

City/Town

State/Province

ZIP/Postal Code

Email Address

Phone Number

#7

**COMPLETE****Collector:** Web Link 1 (Web Link)**Started:** Tuesday, January 24, 2017 10:00:56 PM**Last Modified:** Tuesday, January 24, 2017 10:10:54 PM**Time Spent:** 00:09:57**IP Address:** 198.7.58.81

PAGE 1: Tenant User Survey

Q1: Are you a current airport tenant or based pilot?
(Please check one) Yes

Q2: Do you currently rent an aircraft from the airport or do you own your own aircraft? (Please check one) Own

Q3: Do you use general aviation and/or corporate aircraft as a transportation method for business or pleasure? Personal

Q4: Where is/are your aircraft based? KSGH

PAGE 2: Runway Feedback

Q5: Please tell us about the aircraft that you currently use at SGH.

Make/model Mooney Statesman

Estimated Trips/year 40

Furthest destination KPHX

Q6: What are runway length preferences for SGH's primary runway for aircraft that you currently use?

Current Aircraft 1 Runway Length Preferred 9k feet

Q7: What are the visibility minimums needed for SGH's primary runway for aircraft that you currently use?

Current Aircraft 1 Visibility Needed 1/2 mile

Q8: Do you use the crosswind runway at SGH? Yes

Q9: If you do use the crosswind runway, how often do you use it? When x/w component exceeds 10 kts

Q10: If you do use the crosswind runway, what is your length preference? 5000 ft

Q11: Do you plan to upgrade your aircraft in the future? Yes,
If so, what runway length will you need?
Same as current

Q12: Is there any other information or comments related to the responses that you provided to Questions 5-10? Respondent skipped this question

PAGE 3: Airport Features and Amenities

Q13: How do you rate the following line services? (Please check one per service)

Friendliness	Fair
Preheats	NA

Q14: How would you rate aircraft maintenance services? (Please check one per service)

Availability	NA
--------------	----

Q15: How would you rate rental aircraft at the airport? (Please check one per line)

Availability	NA
--------------	----

Q16: How would you rate aircraft instruction at the airport? (Please check one per line)

Availability of instructors	NA
-----------------------------	----

Q17: How would you rate the fueling at the airport? (Please check one per line.)

Competitiveness of cost of 100LL	Good
Competitiveness of cost of Jet A	NA

Q18: How do you rate the airport facilities and management? (Please check one per line.)

Runway	Good
NAVAIDS	Fair
Terminal	NA

Q19: As compared to other airports of similar size, how do you rate the quality of service you receive at Springfield-Beckley Airport? (Please check one box.)

The same quality service

Q20: Are there any other comments that you would like to share about the airport or staff?*Respondent skipped this question***Q21: May we contact you to follow up about your responses?***Respondent skipped this question***Q22: Contact Information** It is optional to provide your contact information. If you choose to share it, you will receive information related to the Master Plan update and about public meetings you can attend.*Respondent skipped this question*

#8

**COMPLETE****Collector:** Web Link 1 (Web Link)**Started:** Thursday, January 26, 2017 8:40:58 AM**Last Modified:** Thursday, January 26, 2017 8:44:15 AM**Time Spent:** 00:03:17**IP Address:** 98.29.132.134

PAGE 1: Tenant User Survey

Q1: Are you a current airport tenant or based pilot?
(Please check one) Yes

Q2: Do you currently rent an aircraft from the airport or do you own your own aircraft? (Please check one) Own

Q3: Do you use general aviation and/or corporate aircraft as a transportation method for business or pleasure? Personal

Q4: Where is/are your aircraft based? SGH

PAGE 2: Runway Feedback

Q5: Please tell us about the aircraft that you currently use at SGH.

Make/model Maule MX-7-180

Estimated Trips/year 10

Q6: What are runway length preferences for SGH's primary runway for aircraft that you currently use?

Current Aircraft 1 Runway Length Preferred <9k feet

Q7: What are the visibility minimums needed for SGH's primary runway for aircraft that you currently use?

Current Aircraft 1 Visibility Needed 1 mile

Q8: Do you use the crosswind runway at SGH? Yes

Q9: If you do use the crosswind runway, how often do you use it? Any time the winds are 60 degrees off 24 - 6

Q10: If you do use the crosswind runway, what is your length preference? 3500ft or greater

Q11: Do you plan to upgrade your aircraft in the future? No

Q12: Is there any other information or comments related to the responses that you provided to Questions 5-10? Respondent skipped this question

PAGE 3: Airport Features and Amenities

Q13: How do you rate the following line services? (Please check one per service)

Efficiency/Timeliness	Excellent
-----------------------	-----------

Q14: How would you rate aircraft maintenance services? (Please check one per service)

Cost	NA
------	----

Q15: How would you rate rental aircraft at the airport? (Please check one per line)	<i>Respondent skipped this question</i>
--	---

Q16: How would you rate aircraft instruction at the airport? (Please check one per line)	<i>Respondent skipped this question</i>
---	---

Q17: How would you rate the fueling at the airport? (Please check one per line.)	<i>Respondent skipped this question</i>
---	---

Q18: How do you rate the airport facilities and management? (Please check one per line.)	<i>Respondent skipped this question</i>
---	---

Q19: As compared to other airports of similar size, how do you rate the quality of service you receive at Springfield-Beckley Airport? (Please check one box.)	<i>Respondent skipped this question</i>
---	---

Q20: Are there any other comments that you would like to share about the airport or staff?	<i>Respondent skipped this question</i>
---	---

Q21: May we contact you to follow up about your responses?	<i>Respondent skipped this question</i>
---	---

Q22: Contact Information It is optional to provide your contact information. If you choose to share it, you will receive information related to the Master Plan update and about public meetings you can attend.	<i>Respondent skipped this question</i>
---	---

#9

**COMPLETE****Collector:** Web Link 1 (Web Link)**Started:** Thursday, January 26, 2017 7:05:32 PM**Last Modified:** Thursday, January 26, 2017 7:19:46 PM**Time Spent:** 00:14:13**IP Address:** 65.189.56.110

PAGE 1: Tenant User Survey

Q1: Are you a current airport tenant or based pilot? (Please check one)	Yes
Q2: Do you currently rent an aircraft from the airport or do you own your own aircraft? (Please check one)	Own
Q3: Do you use general aviation and/or corporate aircraft as a transportation method for business or pleasure?	Personal
Q4: Where is/are your aircraft based?	sgH

PAGE 2: Runway Feedback

Q5: Please tell us about the aircraft that you currently use at SGH.	
Make/model	piPer pa30
Estimated Trips/year	10
Furthest destination	hilton head sc
Make/model	c172
Estimated Trips/year	10
Furthest destination	ky
Q6: What are runway length preferences for SGH's primary runway for aircraft that you currently use?	
Current Aircraft 1	Runway Length Preferred <9k feet
Current Aircraft 2	Runway Length Preferred <9k feet
Q7: What are the visibility minimums needed for SGH's primary runway for aircraft that you currently use?	
Current Aircraft 1	Visibility Needed 1/2 mile
Current Aircraft 2	Visibility Needed 1/2 mile
Q8: Do you use the crosswind runway at SGH?	Yes
Q9: If you do use the crosswind runway, how often do you use it?	<i>Respondent skipped this question</i>
Q10: If you do use the crosswind runway, what is your length preference?	<i>Respondent skipped this question</i>

Q11: Do you plan to upgrade your aircraft in the future? No

Q12: Is there any other information or comments related to the responses that you provided to Questions 5-10? *Respondent skipped this question*

PAGE 3: Airport Features and Amenities

Q13: How do you rate the following line services? (Please check one per service)

Hours of Operation Good

Friendliness Excellent

Preheats NA

Q14: How would you rate aircraft maintenance services? (Please check one per service)

Cost NA

Q15: How would you rate rental aircraft at the airport? (Please check one per line)

Availability NA

Q16: How would you rate aircraft instruction at the airport? (Please check one per line)

Availability of instructors NA

Q17: How would you rate the fueling at the airport? (Please check one per line.)

Competitiveness of cost of 100LL Good

Availability of 100LL Excellent

Q18: How do you rate the airport facilities and management? (Please check one per line.)

Runway Good

Q19: As compared to other airports of similar size, how do you rate the quality of service you receive at Springfield-Beckley Airport? (Please check one box.) Moderately better quality service

Q20: Are there any other comments that you would like to share about the airport or staff? *Respondent skipped this question*

Q21: May we contact you to follow up about your responses? Yes

Q22: Contact Information It is optional to provide your contact information. If you choose to share it, you will receive information related to the Master Plan update and about public meetings you can attend.

Name

Address

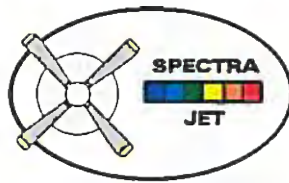
City/Town

State/Province

ZIP/Postal Code

Email Address

Phone Number



5826 Blue Sky Drive, Springfield, Ohio 45502
CRS X1JR161Y
Office# 937-325-3893
Fax# 937-325-4961

February 10, 2017

From: Spectra Jet, Incorporated/S Jet, LLC

Subject: Airport Master Plan

To: Don Smith, Airport Manager and Chris Snyder, Woolpert

In reference to your Master Plan update, the following is submitted:

Please consider the enclosed user surveys completed by Spectra Jet customers.

Chief Pilots, in all, have the need for more runway, not less, seems to be paramount, especially for inclement weather.

Spectra Jet needs sufficient high quality airport infrastructure to support our business growth and ultimate long term success.

Respectfully,

President/General Manager/Member

Springfield-Beckley Municipal Airport - Master Plan Update

Tenant/User Survey

This survey is part of the Master Plan update for Springfield-Beckley Municipal Airport. Your responses will be kept confidential. The survey results will be released in aggregate without any identifying information from individual respondents.

Individual responses will not be released to the airport or any other party without your written permission.

Thank you for taking the time to respond.

1. Are you a current airport tenant or based pilot? (Please check one)

- Yes
- No
- NA

2. Do you currently rent an aircraft from the airport or do you own your own aircraft? (Please check one)

- Rent
- Own
- Lease, Fractional
- NA

3. Do you use general aviation and/or corporate aircraft as a transportation method for business or pleasure?

- Business
- Personal

4. Where is/are your aircraft based?

SPETRAJET HANGAR K9G14

SERGE BLUESKY DRIVE

MAJOR REPAIR AND OVERHAUL OF LEAJETS - CHALLENGERS
AND MILITARY LEAJETS.

The following questions relate to runway length preferences at SGH.

5. Please tell us about the aircraft that you currently use at SGH.

Current Aircraft 1 CHALLENGER
 Make/model BOMBARDIER 300/601/607
 Estimated Trips/year _____
 Furthest destination _____

Current Aircraft 2 LEAR 60
 Make/model LEARJET 60 / 60XR
 Estimated Trips/year _____
 Furthest destination _____

Current Aircraft 3 LEAR 35
 Make/model LEARJET 35A / 55
 Estimated Trips/year _____
 Furthest destination _____

Current Aircraft 4 LEAR 25
 Make/model LEARJET 25
 Estimated Trips/year _____
 Furthest destination _____

6. What are runway length preferences for SGH's primary runway for aircraft that you currently use? (Check one box for each aircraft.)

	Runway Length Preferred <9k feet	Runway Length Preferred 9k feet	Runway Length Preferred >9k feet
Current Aircraft 1		OK	
Current Aircraft 2	7,500		
Current Aircraft 3	7,500		
Current Aircraft 4	7,500		

7. What are the visibility minimums needed for SGH's primary runway for aircraft that you currently use?
 (Check one box for each aircraft.)

	Visibility Needed 1/2 mile	Visibility Needed 3/4 mile	Visibility Needed 1 mile
Current Aircraft 1			
Current Aircraft 2			
Current Aircraft 3			
Current Aircraft 4			

8. Do you use the crosswind runway at SGH?

- Yes
 No

9. If you do use the crosswind runway, how often do you use it?

20 PERCENT OF THE TIME

10. If you do use the crosswind runway, what is your length preference?

APPROX. 7,500 RECOMMENDED BY CHIEF PILOTS WHO MUST COMPLY WITH ACCELERATE-STOP DISTANCES AS PUBLISHED.

11. Do you plan to upgrade your aircraft in the future?

- Yes SMALL TURBO PROP —
 No

If so, what runway length will you need?

CUSTOMERS WITH HEAVY CORPORATE AIRCRAFT, eg.
 BOMBARDIER GLOBAL SERIES (9-10,000')
 CUSTOMERS →

12. Is there any other information or comments related to the responses that you provided to Questions 5-11?

These questions relate to the Airport's features and amenities for tenant users.

13. How do you rate the following line services? (Please check one per service)

	Poor	Fair	Good	Excellent	NA
Hours of Operation					
Efficiency/Timeliness					
Friendliness					
Tug services	N/A				
Preheats					
Other (please specify)					

14. How would you rate aircraft maintenance services? (Please check one per service)

	Poor	Fair	Good	Excellent	NA
Cost	N/A				
Quality					
Availability					

15. How would you rate rental aircraft at the airport? (Please check one per line)

	Poor	Fair	Good	Excellent	NA
Availability					
Cost	N/A				
Quality					
Equipment/Avionics					

16. How would you rate aircraft instruction at the airport? (Please check one per line)

	Poor	Fair	Good	Excellent	NA
Availability of instructors					
Efficiency/Timeliness					
Friendliness		N/A			

17. How would you rate the fueling at the airport? (Please check one per line.)

	Poor	Fair	Good	Excellent	NA
Competitiveness of cost of 100LL					
Competitiveness of cost of Jet A					
Availability of 100LL		N/A			
Reliability of self-service 100LL		N/A			
Availability of Jet A					
Other (please specify)					

18. How do you rate the airport facilities and management? (Please check one per line.)

	Poor	Fair	Good	Excellent	NA
Runway					
Taxiways					
NAVAIDS		N/A			
Hangars		N/A			
Terminal					
Internet Access					

	Poor	Fair	Good	Excellent	NA
Pilot Supplies					
Overall Airport Appearance					
Airport Management/Personnel					
Other (please specify)					

19. As compared to other airports of similar size, how do you rate the quality of service you receive at Springfield-Beckley Airport? (Please check one box.)

- Less quality service
- The same quality service
- Slightly better quality service
- Moderately better quality service
- Extremely better quality service

Comments

N/A

20. Are there any other comments that you would like to share about the airport or staff?

Comments

21. May we contact you to follow up about your responses?

- Yes
- No

22. Contact Information

It is optional to provide your contact information. If you choose to share it, you will receive information related to the Master Plan update and about public meetings you can attend.

Name

Company

Address

Address 2

City/Town

State/Province

ZIP/Postal Code

Email Address

Phone Number

Springfield-Beckley Municipal Airport - Master Plan Update

Tenant/User Survey

This survey is part of the Master Plan update for Springfield-Beckley Municipal Airport. Your responses will be kept confidential. The survey results will be released in aggregate without any identifying information from individual respondents.

Individual responses will not be released to the airport or any other party without your written permission.

Thank you for taking the time to respond.

1. Are you a current airport tenant or based pilot? (Please check one)

- Yes
- No
- NA

2. Do you currently rent an aircraft from the airport or do you own your own aircraft? (Please check one)

- Rent
- Own
- Lease, Fractional
- NA

3. Do you use general aviation and/or corporate aircraft as a transportation method for business or pleasure?

- Business
- Personal

4. Where is/are your aircraft based?

KCRW Charleston, WV

The following questions relate to runway length preferences at SGH.

5. Please tell us about the aircraft that you currently use at SGH.

Current Aircraft 1

Make/model

Estimated Trips/year

Furthest destination

Bombardier Learjet 60

30

California

Current Aircraft 2

Make/model

Estimated Trips/year

Furthest destination

Learjet 250

10

VNC Florida

Current Aircraft 3

Make/model

Estimated Trips/year

Furthest destination

Current Aircraft 4

Make/model

Estimated Trips/year

Furthest destination

6. What are runway length preferences for SGH's primary runway for aircraft that you currently use? (Check one box for each aircraft.)

	Runway Length Preferred <9k feet	Runway Length Preferred 9k feet	Runway Length Preferred >9k feet
Current Aircraft 1		N40SE	
Current Aircraft 2		N108FL	
Current Aircraft 3			
Current Aircraft 4			

7. What are the visibility minimums needed for SGH's primary runway for aircraft that you currently use?
 (Check one box for each aircraft.)

	Visibility Needed 1/2 mile	Visibility Needed 3/4 mile	Visibility Needed 1 mile
Current Aircraft 1	N405E		
Current Aircraft 2	N108FL		
Current Aircraft 3			
Current Aircraft 4			

8. Do you use the crosswind runway at SGH?

- Yes
 No

9. If you do use the crosswind runway, how often do you use it?

10%

10. If you do use the crosswind runway, what is your length preference?

MORE THEN EXISTING BUT UNDER STRONG WINDS IT IS MARGINAL AT BEST BUT BETTER AND SAFER THEN DIRECT X WIND

11. Do you plan to upgrade your aircraft in the future?

- Yes
 No

If so, what runway length will you need?

SAME LEAR JETS ARE MARGINAL ON A 5000 TO 6000 FOOT RUNWAY MORE NEEDED IN ADVERSE CONDITIONS AND ESPECIALLY IN AN EMERGENCY

12. Is there any other information or comments related to the responses that you provided to Questions 5-11?

These questions relate to the Airport's features and amenities for tenant users.

13. How do you rate the following line services? (Please check one per service)

	Poor	Fair	Good	Excellent	NA
Hours of Operation			✓		
Efficiency/Timeliness				✓	
Friendliness				✓	
Tug services				✓	
Preheats					✓
Other (please specify)					

14. How would you rate aircraft maintenance services? (Please check one per service)

	Poor	Fair	Good	Excellent	NA
Cost				✓	
Quality				✓	
Availability				✓	

15. How would you rate rental aircraft at the airport? (Please check one per line)

	Poor	Fair	Good	Excellent	NA
Availability					✓
Cost					✓
Quality					✓
Equipment/Avionics					✓

16. How would you rate aircraft instruction at the airport? (Please check one per line)

	Poor	Fair	Good	Excellent	NA
Availability of instructors					✓
Efficiency/Timeliness					✓
Friendliness					✓

17. How would you rate the fueling at the airport? (Please check one per line.)

	Poor	Fair	Good	Excellent	NA
Competitiveness of cost of 100LL				✓	
Competitiveness of cost of Jet A				✓	
Availability of 100LL				✓	
Reliability of self-service 100LL					✓
Availability of Jet A				✓	
Other (please specify) _____					

18. How do you rate the airport facilities and management? (Please check one per line.)

	Poor	Fair	Good	Excellent	NA
Runway				✓	
Taxiways				✓	
NAVAIDS			✓		
Hangars				✓	
Terminal					✓
Internet Access				✓	

	Poor	Fair	Good	Excellent	NA
Pilot Supplies					✓
Overall Airport Appearance				✓	
Airport Management/Personnel					✓
Other (please specify)					

19. As compared to other airports of similar size, how do you rate the quality of service you receive at Springfield-Beckley Airport? (Please check one box.)

- Less quality service
- The same quality service
- Slightly better quality service
- Moderately better quality service
- Extremely better quality service

Comments

20. Are there any other comments that you would like to share about the airport or staff?

Comments

21. May we contact you to follow up about your responses?

- Yes
- No

22. Contact Information

It is optional to provide your contact information. If you choose to share it, you will receive information related to the Master Plan update and about public meetings you can attend.

Name

Company

SEGAL LAW LLC

Address

810 KANAWHA Blvd. E.

Address 2

Charleston

City/Town

State/Province

WV

ZIP/Postal Code

25301

Email Address

Phone Number



Springfield-Beckley Municipal Airport - Master Plan Update

Tenant/User Survey

This survey is part of the Master Plan update for Springfield-Beckley Municipal Airport. Your responses will be kept confidential. The survey results will be released in aggregate without any identifying information from individual respondents.

Individual responses will not be released to the airport or any other party without your written permission.

Thank you for taking the time to respond.

1. Are you a current airport tenant or based pilot? (Please check one)

- Yes
- No
- NA

2. Do you currently rent an aircraft from the airport or do you own your own aircraft? (Please check one)

- Rent
- Own
- Lease, Fractional
- NA

3. Do you use general aviation and/or corporate aircraft as a transportation method for business or pleasure?

- Business
- Personal

4. Where is/are your aircraft based?

KLNS

The following questions relate to runway length preferences at SGH.

5. Please tell us about the aircraft that you currently use at SGH.

Current Aircraft 1 LR60
 Make/model Bombardier
 Estimated Trips/year 3
 Furthest destination CONTINENTAL US + PARIS BEAUX

Current Aircraft 2 LR31
 Make/model Bombardier
 Estimated Trips/year 3
 Furthest destination U.S.

Current Aircraft 3 LR31A
 Make/model Bombardier
 Estimated Trips/year 3
 Furthest destination U.S.

Current Aircraft 4 LR31A
 Make/model Bombardier
 Estimated Trips/year 3
 Furthest destination U.S.

6. What are runway length preferences for SGH's primary runway for aircraft that you currently use? (Check one box for each aircraft.)

	Runway Length Preferred <9k feet	Runway Length Preferred 9k feet	Runway Length Preferred >9k feet
Current Aircraft 1	✓		
Current Aircraft 2	/		
Current Aircraft 3	/		
Current Aircraft 4	/		

7. What are the visibility minimums needed for SGH's primary runway for aircraft that you currently use?
(Check one box for each aircraft.)

	Visibility Needed 1/2 mile	Visibility Needed 3/4 mile	Visibility Needed 1 mile
Current Aircraft 1	✓		
Current Aircraft 2	✓		
Current Aircraft 3	✓		
Current Aircraft 4	✓		

8. Do you use the crosswind runway at SGH?

- Yes
- No

9. If you do use the crosswind runway, how often do you use it?

10%

10. If you do use the crosswind runway, what is your length preference?

5-6,000 ft.

11. Do you plan to upgrade your aircraft in the future?

- Yes
- No

If so, what runway length will you need?

7000 +

12. Is there any other information or comments related to the responses that you provided to Questions 5-11?

These questions relate to the Airport's features and amenities for tenant users.

13. How do you rate the following line services? (Please check one per service)

	Poor	Fair	Good	Excellent	NA
Hours of Operation					<input checked="" type="checkbox"/>
Efficiency/Timeliness					<input checked="" type="checkbox"/>
Friendliness					<input checked="" type="checkbox"/>
Tug services					<input checked="" type="checkbox"/>
Preheats					<input checked="" type="checkbox"/>
Other (please specify)					<input checked="" type="checkbox"/>

14. How would you rate aircraft maintenance services? (Please check one per service)

	Poor	Fair	Good	Excellent	NA
Cost				<input checked="" type="checkbox"/>	
Quality				<input checked="" type="checkbox"/>	
Availability				<input checked="" type="checkbox"/>	

15. How would you rate rental aircraft at the airport? (Please check one per line)

	Poor	Fair	Good	Excellent	NA
Availability					<input checked="" type="checkbox"/>
Cost					<input checked="" type="checkbox"/>
Quality					<input checked="" type="checkbox"/>
Equipment/Avionics					<input checked="" type="checkbox"/>

16. How would you rate aircraft instruction at the airport? (Please check one per line)

	Poor	Fair	Good	Excellent	NA
Availability of instructors					/
Efficiency/Timeliness					/
Friendliness					/

17. How would you rate the fueling at the airport? (Please check one per line.)

	Poor	Fair	Good	Excellent	NA
Competitiveness of cost of 100LL					/
Competitiveness of cost of Jet A		/			
Availability of 100LL					/
Reliability of self-service 100LL					/
Availability of Jet A				/	
Other (please specify)					

18. How do you rate the airport facilities and management? (Please check one per line.)

	Poor	Fair	Good	Excellent	NA
Runway			/		
Taxiways			/		
NAVAIDS			/		
Hangars			/		
Terminal					/
Internet Access			/		

	Poor	Fair	Good	Excellent	NA
Pilot Supplies					✓
Overall Airport Appearance			✓		
Airport Management/Personnel					✓
Other (please specify)					

19. As compared to other airports of similar size, how do you rate the quality of service you receive at Springfield-Beckley Airport? (Please check one box.)

- Less quality service
- The same quality service
- Slightly better quality service
- Moderately better quality service
- Extremely better quality service

Comments

LACKS COMMUNICATION with ATC

20. Are there any other comments that you would like to share about the airport or staff?

Comments

If it wasn't for SpectraJet we would not come to SGH.

21. May we contact you to follow up about your responses?

- Yes
- No

22. Contact Information

It is optional to provide your contact information. If you choose to share it, you will receive information related to the Master Plan update and about public meetings you can attend.

Name

Company Venture Jets Inc.

Address _____

Address 2 500 S Airport Rd

City/Town Lititz

State/Province PA

ZIP/Postal Code 17543

Email Address _____

Phone Number _____

Springfield-Beckley Municipal Airport - Master Plan Update

Tenant/User Survey

This survey is part of the Master Plan update for Springfield-Beckley Municipal Airport. Your responses will be kept confidential. The survey results will be released in aggregate without any identifying information from individual respondents.

Individual responses will not be released to the airport or any other party without your written permission.

Thank you for taking the time to respond.

1. Are you a current airport tenant or based pilot? (Please check one)

- Yes
- No
- NA

2. Do you currently rent an aircraft from the airport or do you own your own aircraft? (Please check one)

- Rent
- Own
- Lease, Fractional
- NA

3. Do you use general aviation and/or corporate aircraft as a transportation method for business or pleasure?

- Business
- Personal

4. Where is/are your aircraft based?

SGH

The following questions relate to runway length preferences at SGH.

5. Please tell us about the aircraft that you currently use at SGH.

Current Aircraft 1

Make/model C 310

Estimated Trips/year 50

Furthest destination TEXAS

Current Aircraft 2

Make/model

Estimated Trips/year

Furthest destination

Current Aircraft 3

Make/model

Estimated Trips/year

Furthest destination

Current Aircraft 4

Make/model

Estimated Trips/year

Furthest destination

6. What are runway length preferences for SGH's primary runway for aircraft that you currently use? (Check one box for each aircraft.)

	Runway Length Preferred <9k feet	Runway Length Preferred 9k feet	Runway Length Preferred >9k feet
Current Aircraft 1		<input checked="" type="checkbox"/>	
Current Aircraft 2			
Current Aircraft 3			
Current Aircraft 4			

7. What are the visibility minimums needed for SGH's primary runway for aircraft that you currently use?
 (Check one box for each aircraft.)

	Visibility Needed 1/2 mile	Visibility Needed 3/4 mile	Visibility Needed 1 mile
Current Aircraft 1			X
Current Aircraft 2			
Current Aircraft 3			
Current Aircraft 4			

8. Do you use the crosswind runway at SGH?

- Yes
 No

9. If you do use the crosswind runway, how often do you use it?

40%

10. If you do use the crosswind runway, what is your length preference?

5000

11. Do you plan to upgrade your aircraft in the future?

- Yes
 No

If so, what runway length will you need?

9000

12. Is there any other information or comments related to the responses that you provided to Questions 5-11?

WINTER OPS REQUIRE EVERY POSSIBLE INCH OF RUNWAY AVAILABLE
 BECAUSE RUNWAY CONDITIONS PRECLUDE BRAKING &
 REVERSE OPERATIONS

These questions relate to the Airport's features and amenities for tenant users.

13. How do you rate the following line services? (Please check one per service)

	Poor	Fair	Good	Excellent	NA
Hours of Operation			X		
Efficiency/Timeliness			X		
Friendliness				X	
Tug services				X	
Preheats					X
Other (please specify)					

14. How would you rate aircraft maintenance services? (Please check one per service)

	Poor	Fair	Good	Excellent	NA
Cost				X	
Quality				X	
Availability				X	

15. How would you rate rental aircraft at the airport? (Please check one per line)

	Poor	Fair	Good	Excellent	NA
Availability					X
Cost					X
Quality					X
Equipment/Avionics					X

16. How would you rate aircraft instruction at the airport? (Please check one per line)

	Poor	Fair	Good	Excellent	NA
Availability of instructors					X
Efficiency/Timeliness					X
Friendliness					X

17. How would you rate the fueling at the airport? (Please check one per line.)

	Poor	Fair	Good	Excellent	NA
Competitiveness of cost of 100LL			X		
Competitiveness of cost of Jet A			X		
Availability of 100LL				X	
Reliability of self-service 100LL				X	
Availability of Jet A				X	
Other (please specify)					

18. How do you rate the airport facilities and management? (Please check one per line.)

	Poor	Fair	Good	Excellent	NA
Runway			X		
Taxiways					
NAVAIDS		X			
Hangars	X				
Terminal		X			
Internet Access	\	X			

	Poor	Fair	Good	Excellent	NA
Pilot Supplies					
Overall Airport Appearance		X			
Airport Management/Personnel		X			
Other (please specify)					

19. As compared to other airports of similar size, how do you rate the quality of service you receive at Springfield-Beckley Airport? (Please check one box.)

- Less quality service
- The same quality service
- Slightly better quality service
- Moderately better quality service
- Extremely better quality service

Comments

LITTLE TO NO COMMUNITY INVOLVEMENT
TO MAKE SGH A DESTINATION

20. Are there any other comments that you would like to share about the airport or staff?

Comments

THE MAINTENANCE FACILITY IS A BETTER "FBO"
THAN THE ACTUAL FBO

21. May we contact you to follow up about your responses?

- Yes
- No

22. Contact Information

It is optional to provide your contact information. If you choose to share it, you will receive information related to the Master Plan update and about public meetings you can attend.

Name

Company

Address

Address 2

City/Town

State/Province

ZIP/Postal Code

Email Address

Phone Number

Springfield-Beckley Municipal Airport - Master Plan Update

Tenant/User Survey

This survey is part of the Master Plan update for Springfield-Beckley Municipal Airport. Your responses will be kept confidential. The survey results will be released in aggregate without any identifying information from individual respondents.

Individual responses will not be released to the airport or any other party without your written permission.

Thank you for taking the time to respond.

1. Are you a current airport tenant or based pilot? (Please check one)

- Yes
- No
- NA

2. Do you currently rent an aircraft from the airport or do you own your own aircraft? (Please check one)

- Rent
- Own
- Lease, Fractional
- NA

3. Do you use general aviation and/or corporate aircraft as a transportation method for business or pleasure?

- Business
- Personal

4. Where is/are your aircraft based?

DVT

The following questions relate to runway length preferences at SGH.

5. Please tell us about the aircraft that you currently use at SGH.

Current Aircraft 1	2
Make/model	LR-60
Estimated Trips/year	80
Furthest destination	ALL US
Current Aircraft 2	
Make/model	GULFSTREAM IV
Estimated Trips/year	20
Furthest destination	ALL US WORLDWIDE
Current Aircraft 3	
Make/model	
Estimated Trips/year	
Furthest destination	
Current Aircraft 4	
Make/model	
Estimated Trips/year	
Furthest destination	

6. What are runway length preferences for SGH's primary runway for aircraft that you currently use? (Check one box for each aircraft.)

	Runway Length Preferred <9k feet	Runway Length Preferred 9k feet	Runway Length Preferred >9k feet
Current Aircraft 1			X
Current Aircraft 2			X
Current Aircraft 3			
Current Aircraft 4			

7. What are the visibility minimums needed for SGH's primary runway for aircraft that you currently use?
(Check one box for each aircraft.)

	Visibility Needed 1/2 mile	Visibility Needed 3/4 mile	Visibility Needed 1 mile
Current Aircraft 1	X		
Current Aircraft 2	X		
Current Aircraft 3			
Current Aircraft 4			

8. Do you use the crosswind runway at SGH?

- Yes
 No

9. If you do use the crosswind runway, how often do you use it?

20%

10. If you do use the crosswind runway, what is your length preference?

6000

11. Do you plan to upgrade your aircraft in the future?

- Yes
 No

If so, what runway length will you need?

12. Is there any other information or comments related to the responses that you provided to Questions 5-11?

CAN'T DEPEND ON CLEAN RUNWAYS DURING INCLEMENT WEATHER, THIS REQUIRES EXTENDED RUNWAY LENGTHS TO USE AIRPORT

These questions relate to the Airport's features and amenities for tenant users.

13. How do you rate the following line services? (Please check one per service)

	Poor	Fair	Good	Excellent	NA
Hours of Operation			X		
Efficiency/Timeliness				X	
Friendliness				X	
Tug services					X
Preheats					X
Other (please specify)					

14. How would you rate aircraft maintenance services? (Please check one per service)

	Poor	Fair	Good	Excellent	NA
Cost				X	
Quality				X	
Availability				X	

15. How would you rate rental aircraft at the airport? (Please check one per line)

	Poor	Fair	Good	Excellent	NA
Availability					X
Cost					
Quality					
Equipment/Avionics					

16. How would you rate aircraft instruction at the airport? (Please check one per line)

	Poor	Fair	Good	Excellent	NA
Availability of instructors					X
Efficiency/Timeliness					
Friendliness					

17. How would you rate the fueling at the airport? (Please check one per line.)

	Poor	Fair	Good	Excellent	NA
Competitiveness of cost of 100LL					X
Competitiveness of cost of Jet A			X		
Availability of 100LL					X
Reliability of self-service 100LL					X
Availability of Jet A				X	
Other (please specify) _____					

18. How do you rate the airport facilities and management? (Please check one per line.)

	Poor	Fair	Good	Excellent	NA
Runway			X		
Taxiways			X		
NAVAIDS		X			
Hangars					X
Terminal		X			
Internet Access		X			

	Poor	Fair	Good	Excellent	NA
Pilot Supplies					
Overall Airport Appearance		X			
Airport Management/Personnel		X			
Other (please specify)					

19. As compared to other airports of similar size, how do you rate the quality of service you receive at Springfield-Beckley Airport? (Please check one box.)

- Less quality service
 The same quality service
 Slightly better quality service
 Moderately better quality service
 Extremely better quality service

Comments

20. Are there any other comments that you would like to share about the airport or staff?

Comments

HELPFUL FBO & OFFICE GIRLS

21. May we contact you to follow up about your responses?

- Yes
 No

22. Contact Information

It is optional to provide your contact information. If you choose to share it, you will receive information related to the Master Plan update and about public meetings you can attend.

Name

Company

Address

Address 2

City/Town

State/Province

ZIP/Postal Code

Email Address

Phone Number

Springfield-Beckley Municipal Airport - Master Plan Update

Tenant/User Survey

This survey is part of the Master Plan update for Springfield-Beckley Municipal Airport. Your responses will be kept confidential. The survey results will be released in aggregate without any identifying information from individual respondents.

Individual responses will not be released to the airport or any other party without your written permission.

Thank you for taking the time to respond.

1. Are you a current airport tenant or based pilot? (Please check one)

- Yes
- No
- NA

2. Do you currently rent an aircraft from the airport or do you own your own aircraft? (Please check one)

- Rent
- Own
- Lease, Fractional
- NA

3. Do you use general aviation and/or corporate aircraft as a transportation method for business or pleasure?

- Business
- Personal

4. Where is/are your aircraft based?

CMM - Columbus

The following questions relate to runway length preferences at SGH.

5. Please tell us about the aircraft that you currently use at SGH.

Current Aircraft 1	
Make/model	Learjet 45
Estimated Trips/year	about a dozen
Furthest destination	Naples Florida
Current Aircraft 2	
Make/model	
Estimated Trips/year	
Furthest destination	
Current Aircraft 3	
Make/model	
Estimated Trips/year	
Furthest destination	
Current Aircraft 4	
Make/model	
Estimated Trips/year	
Furthest destination	

6. What are runway length preferences for SGH's primary runway for aircraft that you currently use? (Check one box for each aircraft.)

	Runway Length Preferred <9k feet	Runway Length Preferred 9k feet	Runway Length Preferred >9k feet
Current Aircraft 1		✓	
Current Aircraft 2			
Current Aircraft 3			
Current Aircraft 4			

The margin of safety is always improved with more runway. We need a minimum of 6000 feet to always be able to fly at a maximum weight, summer temperature

7. What are the visibility minimums needed for SGH's primary runway for aircraft that you currently use?
 (Check one box for each aircraft.)

	Visibility Needed 1/2 mile	Visibility Needed 3/4 mile	Visibility Needed 1 mile
Current Aircraft 1	✓		
Current Aircraft 2			
Current Aircraft 3			
Current Aircraft 4			

8. Do you use the crosswind runway at SGH?

- Yes
 No

9. If you do use the crosswind runway, how often do you use it?

when needed

10. If you do use the crosswind runway, what is your length preference?

As previously noted, we don't use this runway when we are heavy or temperature is high

11. Do you plan to upgrade your aircraft in the future?

- Yes
 No

If so, what runway length will you need?

12. Is there any other information or comments related to the responses that you provided to Questions 5-11?

These questions relate to the Airport's features and amenities for tenant users.

13. How do you rate the following line services? (Please check one per service)

	Poor	Fair	Good	Excellent	NA
Hours of Operation			✓		
Efficiency/Timeliness			✓		
Friendliness				✓	
Tug services					
Preheats					
Other (please specify)					

14. How would you rate aircraft maintenance services? (Please check one per service)

	Poor	Fair	Good	Excellent	NA
Cost				✓	
Quality				✓	
Availability				✓	

15. How would you rate rental aircraft at the airport? (Please check one per line)

	Poor	Fair	Good	Excellent	NA
Availability					
Cost					
Quality					
Equipment/Avionics					

16. How would you rate aircraft instruction at the airport? (Please check one per line)

	Poor	Fair	Good	Excellent	NA
Availability of instructors					
Efficiency/Timeliness					
Friendliness					

17. How would you rate the fueling at the airport? (Please check one per line.)

	Poor	Fair	Good	Excellent	NA
Competitiveness of cost of 100LL					
Competitiveness of cost of Jet A				✓	
Availability of 100LL					
Reliability of self-service 100LL					
Availability of Jet A				✓	
Other (please specify)					

18. How do you rate the airport facilities and management? (Please check one per line.)

	Poor	Fair	Good	Excellent	NA
Runway				✓	
Taxiways				✓	
NAVAIDS			✓		
Hangars					
Terminal			✓		
Internet Access					

	Poor	Fair	Good	Excellent	NA
Pilot Supplies					
Overall Airport Appearance					
Airport Management/Personnel					
Other (please specify)					

19. As compared to other airports of similar size, how do you rate the quality of service you receive at Springfield-Beckley Airport? (Please check one box.)

- Less quality service
- The same quality service
- Slightly better quality service
- Moderately better quality service
- Extremely better quality service

Comments

20. Are there any other comments that you would like to share about the airport or staff?

Comments

We bring our Learjet to Spectrized for maintenance.
 Additionally, we fly someone who lives in Urbana; we have
 to use Springfield, because of runway length.

21. May we contact you to follow up about your responses?

- Yes
- No

22. Contact Information

It is optional to provide your contact information. If you choose to share it, you will receive information related to the Master Plan update and about public meetings you can attend.

Name

Company

Address

Address 2

City/Town

State/Province

ZIP/Postal Code

Email Address

Phone Number

Springfield-Beckley Municipal Airport - Master Plan Update

Tenant/User Survey

This survey is part of the Master Plan update for Springfield-Beckley Municipal Airport. Your responses will be kept confidential. The survey results will be released in aggregate without any identifying information from individual respondents.

Individual responses will not be released to the airport or any other party without your written permission.

Thank you for taking the time to respond.

1. Are you a current airport tenant or based pilot? (Please check one)

- Yes
- No
- NA

2. Do you currently rent an aircraft from the airport or do you own your own aircraft? (Please check one)

- Rent
- Own
- Lease, Fractional
- NA

3. Do you use general aviation and/or corporate aircraft as a transportation method for business or pleasure?

- Business
- Personal

4. Where is/are your aircraft based?

Columbus (C.M.H)

The following questions relate to runway length preferences at SGH.

5. Please tell us about the aircraft that you currently use at SGH.

Current Aircraft 1	LEAR 45
Make/model	LEAR 45
Estimated Trips/year	12
Furthest destination	NAPLES
Current Aircraft 2	
Make/model	
Estimated Trips/year	
Furthest destination	
Current Aircraft 3	
Make/model	
Estimated Trips/year	
Furthest destination	
Current Aircraft 4	
Make/model	
Estimated Trips/year	
Furthest destination	

6. What are runway length preferences for SGH's primary runway for aircraft that you currently use? (Check one box for each aircraft.)

	Runway Length Preferred <9k feet	Runway Length Preferred 9k feet	Runway Length Preferred >9k feet
Current Aircraft 1		X	
Current Aircraft 2			
Current Aircraft 3			
Current Aircraft 4			

In A perfect world we need 7k for all situations

7. What are the visibility minimums needed for SGH's primary runway for aircraft that you currently use? (Check one box for each aircraft.)

	Visibility Needed 1/2 mile	Visibility Needed 3/4 mile	Visibility Needed 1 mile
Current Aircraft 1	X		
Current Aircraft 2			
Current Aircraft 3			
Current Aircraft 4			

8. Do you use the crosswind runway at SGH?

- Yes
 No

9. If you do use the crosswind runway, how often do you use it?

50% of the time

10. If you do use the crosswind runway, what is your length preference?

11. Do you plan to upgrade your aircraft in the future?

- Yes
 No

If so, what runway length will you need?

Minimum 7,000

12. Is there any other information or comments related to the responses that you provided to Questions 5-11?

These questions relate to the Airport's features and amenities for tenant users.

13. How do you rate the following line services? (Please check one per service)

	Poor	Fair	Good	Excellent	NA
Hours of Operation			X		
Efficiency/Timeliness				X	
Friendliness				X	
Tug services				X	
Preheats				X	
Other (please specify)					X

14. How would you rate aircraft maintenance services? (Please check one per service) *Spectra-Jet*

	Poor	Fair	Good	Excellent	NA
Cost				X	
Quality				X	
Availability				X	

15. How would you rate rental aircraft at the airport? (Please check one per line)

	Poor	Fair	Good	Excellent	NA
Availability					X
Cost					X
Quality					X
Equipment/Avionics					X

16. How would you rate aircraft instruction at the airport? (Please check one per line)

	Poor	Fair	Good	Excellent	NA
Availability of instructors					X
Efficiency/Timeliness					X
Friendliness					X

17. How would you rate the fueling at the airport? (Please check one per line.)

	Poor	Fair	Good	Excellent	NA
Competitiveness of cost of 100LL					X
Competitiveness of cost of Jet A				X	
Availability of 100LL					X
Reliability of self-service 100LL					X
Availability of Jet A				X	
Other (please specify)					X

18. How do you rate the airport facilities and management? (Please check one per line.)

	Poor	Fair	Good	Excellent	NA
Runway					X
Taxiways					X
NAVAIDS					X
Hangars					X
Terminal					X
Internet Access					X

	Poor	Fair	Good	Excellent	NA
Pilot Supplies					X
Overall Airport Appearance					X
Airport Management/Personnel					X
Other (please specify)					X

19. As compared to other airports of similar size, how do you rate the quality of service you receive at Springfield-Beckley Airport? (Please check one box.)

- Less quality service
- The same quality service
- Slightly better quality service
- Moderately better quality service
- Extremely better quality service

Comments

We mostly deal with Spectra-Jet & it is
 Always an excellent experience

20. Are there any other comments that you would like to share about the airport or staff?

Comments

21. May we contact you to follow up about your responses?

- Yes
- No

22. Contact Information

It is optional to provide your contact information. If you choose to share it, you will receive information related to the Master Plan update and about public meetings you can attend.

Name

Company Five Aircraft Management

Address 2160 West Case Road

Address 2 _____

City/Town Columbus, OH 43235

State/Province _____

ZIP/Postal Code _____

Email Address _____

Phone Number _____

Springfield-Beckley Municipal Airport - Master Plan Update

Tenant/User Survey

This survey is part of the Master Plan update for Springfield-Beckley Municipal Airport. Your responses will be kept confidential. The survey results will be released in aggregate without any identifying information from individual respondents.

Individual responses will not be released to the airport or any other party without your written permission.

Thank you for taking the time to respond.

1. Are you a current airport tenant or based pilot? (Please check one)

- Yes
- No
- NA

2. Do you currently rent an aircraft from the airport or do you own your own aircraft? (Please check one)

- Rent
- Own
- Lease, Fractional
- NA

3. Do you use general aviation and/or corporate aircraft as a transportation method for business or pleasure?

- Business
- Personal

BOTH

4. Where is/are your aircraft based?

KLIT KSOZ

The following questions relate to runway length preferences at SGH.

5. Please tell us about the aircraft that you currently use at SGH.

Current Aircraft 1
 Make/model: LEAR GOXR
 Estimated Trips/year: 150
 Furthest destination: BERMUDA / CABO

Current Aircraft 2
 Make/model: BEECHCRAFT BARON
 Estimated Trips/year: 75
 Furthest destination: WASHINGTON DOWNS

Current Aircraft 3
 Make/model: _____
 Estimated Trips/year: _____
 Furthest destination: _____

Current Aircraft 4
 Make/model: _____
 Estimated Trips/year: _____
 Furthest destination: _____

6. What are runway length preferences for SGH's primary runway for aircraft that you currently use? (Check one box for each aircraft.)

	Runway Length Preferred <9k feet	Runway Length Preferred 9k feet	Runway Length Preferred >9k feet
Current Aircraft 1		✓	
Current Aircraft 2	✓		
Current Aircraft 3			
Current Aircraft 4			

7. What are the visibility minimums needed for SGH's primary runway for aircraft that you currently use? (Check one box for each aircraft.)

	Visibility Needed 1/2 mile	Visibility Needed 3/4 mile	Visibility Needed 1 mile
Current Aircraft 1	✓		
Current Aircraft 2	✓		
Current Aircraft 3			
Current Aircraft 4			

8. Do you use the crosswind runway at SGH?

- Yes
- No

9. If you do use the crosswind runway, how often do you use it?

25%

10. If you do use the crosswind runway, what is your length preference?

5400'

11. Do you plan to upgrade your aircraft in the future?

- Yes
- No

If so, what runway length will you need?

SAME

12. Is there any other information or comments related to the responses that you provided to Questions 5-11?

THE AIRPORT Runway & Taxi way CONFIGURATION SERVES US WELL. IF THE RUNWAYS WERE SHORTENED IT WOULD MAKE US LESS LIKELY TO USE THE AIRPORT

These questions relate to the Airport's features and amenities for tenant users.

13. How do you rate the following line services? (Please check one per service)

	Poor	Fair	Good	Excellent	NA
Hours of Operation				✓	
Efficiency/Timeliness				✓	
Friendliness				✓	
Tug services				✓	
Preheats					✓
Other (please specify)					✓

14. How would you rate aircraft maintenance services? (Please check one per service)

	Poor	Fair	Good	Excellent	NA
Cost				✓	
Quality				✓	
Avallability				✓	

15. How would you rate rental aircraft at the airport? (Please check one per line)

	Poor	Fair	Good	Excellent	NA
Avallability					✓
Cost					✓
Quality					✓
Equipment/Avionics					✓

16. How would you rate aircraft instruction at the airport? (Please check one per line)

	Poor	Fair	Good	Excellent	NA
Availability of instructors					✓
Efficiency/Timeliness					✓
Friendliness					✓

17. How would you rate the fueling at the airport? (Please check one per line.)

	Poor	Fair	Good	Excellent	NA
Competitiveness of cost of 100LL				✓	
Competitiveness of cost of Jet A				✓	
Availability of 100LL				✓	
Reliability of self-service 100LL				✓	
Availability of Jet A				✓	
Other (please specify) _____					✓

18. How do you rate the airport facilities and management? (Please check one per line.)

	Poor	Fair	Good	Excellent	NA
Runway				✓	
Taxiways				✓	
NAVAIDS	✓				
Hangars				✓	
Terminal					✓
Internet Access			✓		

	Poor	Fair	Good	Excellent	NA
Pilot Supplies					✓
Overall Airport Appearance				✓	
Airport Management/Personnel				✓	
Other (please specify)					✓

19. As compared to other airports of similar size, how do you rate the quality of service you receive at Springfield-Beckley Airport? (Please check one box.)

- Less quality service
- The same quality service
- Slightly better quality service
- Moderately better quality service
- Extremely better quality service

Comments

OUR PRIMARY CONTACT IS WITH SPECTRA
JET BUT THEY HAVE ALWAYS GONE ABOVE
AND BEYOND TO ACCOMODATE US.

20. Are there any other comments that you would like to share about the airport or staff?

Comments

21. May we contact you to follow up about your responses?

- Yes
- No

22. Contact Information

It is optional to provide your contact information. If you choose to share it, you will receive information related to the Master Plan update and about public meetings you can attend.

Name

Company

RML AIR LLC

Address

2201 BOND ST

Address 2

TAC AR SOUTH HANGAR

City/Town

LITTLE ROCK

State/Province

AR

ZIP/Postal Code

72206

Email Address

Phone Number

Springfield-Beckley Municipal Airport - Master Plan Update

Tenant/User Survey

This survey is part of the Master Plan update for Springfield-Beckley Municipal Airport. Your responses will be kept confidential. The survey results will be released in aggregate without any identifying information from individual respondents.

Individual responses will not be released to the airport or any other party without your written permission.

Thank you for taking the time to respond.

1. Are you a current airport tenant or based pilot? (Please check one)

- Yes
- No
- NA

2. Do you currently rent an aircraft from the airport or do you own your own aircraft? (Please check one)

- Rent
- Own
- Lease, Fractional
- NA

3. Do you use general aviation and/or corporate aircraft as a transportation method for business or pleasure?

- Business
- Personal

4. Where is/are your aircraft based?

CHARLOTTE NC

The following questions relate to runway length preferences at SGH.

5. Please tell us about the aircraft that you currently use at SGH.

Current Aircraft 1	
Make/model	LEAR 45
Estimated Trips/year	6
Furthest destination	
Current Aircraft 2	
Make/model	LEAR 45
Estimated Trips/year	6
Furthest destination	
Current Aircraft 3	
Make/model	LEAR 45
Estimated Trips/year	6
Furthest destination	
Current Aircraft 4	
Make/model	
Estimated Trips/year	
Furthest destination	

6. What are runway length preferences for SGH's primary runway for aircraft that you currently use? (Check one box for each aircraft.)

	Runway Length Preferred <9k feet	Runway Length Preferred 9k feet	Runway Length Preferred >9k feet
Current Aircraft 1		✓	
Current Aircraft 2		✓	
Current Aircraft 3		✓	
Current Aircraft 4			

7. What are the visibility minimums needed for SGH's primary runway for aircraft that you currently use?
 (Check one box for each aircraft.)

	Visibility Needed 1/2 mile	Visibility Needed 3/4 mile	Visibility Needed 1 mile
Current Aircraft 1	✓		
Current Aircraft 2	✓		
Current Aircraft 3	✓		
Current Aircraft 4			

8. Do you use the crosswind runway at SGH?

- Yes
 No

9. If you do use the crosswind runway, how often do you use it?

10. If you do use the crosswind runway, what is your length preference?

7500'

11. Do you plan to upgrade your aircraft in the future?

- Yes
 No

If so, what runway length will you need?

SAME AS ABOVE

12. Is there any other information or comments related to the responses that you provided to Questions 5-11?

These questions relate to the Airport's features and amenities for tenant users.

13. How do you rate the following line services? (Please check one per service)

	Poor	Fair	Good	Excellent	NA
Hours of Operation				✓	
Efficiency/Timeliness				✓	
Friendliness				✓	
Tug services				✓	
Preheats					✓
Other (please specify)					

14. How would you rate aircraft maintenance services? (Please check one per service)

	Poor	Fair	Good	Excellent	NA
Cost				✓	
Quality				✓	
Availability				✓	

15. How would you rate rental aircraft at the airport? (Please check one per line)

	Poor	Fair	Good	Excellent	NA
Avallability					✓
Cost					✓
Quality					✓
Equipment/Avionics					✓

16. How would you rate aircraft instruction at the airport? (Please check one per line)

	Poor	Fair	Good	Excellent	NA
Availability of instructors					✓
Efficiency/Timeliness					✓
Friendliness					✓

17. How would you rate the fueling at the airport? (Please check one per line.)

	Poor	Fair	Good	Excellent	NA
Competitiveness of cost of 100LL					✓
Competitiveness of cost of Jet A			✓		
Availability of 100LL					✓
Reliability of self-service 100LL					✓
Availability of Jet A				✓	
Other (please specify)					✓

18. How do you rate the airport facilities and management? (Please check one per line.)

	Poor	Fair	Good	Excellent	NA
Runway				✓	
Taxiways				✓	
NAVAIDS <i>ILS OTS</i>	✓				
Hangars				✓	
Terminal					✓
Internet Access			✓		

	Poor	Fair	Good	Excellent	NA
Pilot Supplies					✓
Overall Airport Appearance				✓	
Airport Management/Personnel				✓	
Other (please specify)					

19. As compared to other airports of similar size, how do you rate the quality of service you receive at Springfield-Beckley Airport? (Please check one box.)

- Less quality service
- The same quality service
- Slightly better quality service
- Moderately better quality service
- Extremely better quality service

Comments

20. Are there any other comments that you would like to share about the airport or staff?

Comments

21. May we contact you to follow up about your responses?

- Yes
- No

22. Contact Information

It is optional to provide your contact information. If you choose to share it, you will receive information related to the Master Plan update and about public meetings you can attend.

Name

Company

FAMILY DOLLAR INC

Address

PO Box 1017

Address 2

City/Town

CHARLOTTE NC 28201

State/Province

ZIP/Postal Code

Email Address

Phone Number

Springfield-Beckley Municipal Airport - Master Plan Update

Tenant/User Survey

This survey is part of the Master Plan update for Springfield-Beckley Municipal Airport. Your responses will be kept confidential. The survey results will be released in aggregate without any identifying information from individual respondents.

Individual responses will not be released to the airport or any other party without your written permission.

Thank you for taking the time to respond.

1. Are you a current airport tenant or based pilot? (Please check one)

- Yes
- No
- NA

2. Do you currently rent an aircraft from the airport or do you own your own aircraft? (Please check one)

- Rent
- Own
- Lease, Fractional
- NA

3. Do you use general aviation and/or corporate aircraft as a transportation method for business or pleasure?

- Business
- Personal

4. Where is/are your aircraft based?

KMFD MANSFIELD, OH

The following questions relate to runway length preferences at SGH.

5. Please tell us about the aircraft that you currently use at SGH.

Current Aircraft 1	
Make/model	LEAR 75
Estimated Trips/year	4
Furthest destination	KPHX
Current Aircraft 2	
Make/model	RAYTHEON BE9
Estimated Trips/year	2
Furthest destination	KMFD
Current Aircraft 3	
Make/model	
Estimated Trips/year	
Furthest destination	
Current Aircraft 4	
Make/model	
Estimated Trips/year	
Furthest destination	

6. What are runway length preferences for SGH's primary runway for aircraft that you currently use? (Check one box for each aircraft.)

	Runway Length Preferred <9k feet	Runway Length Preferred 9k feet	Runway Length Preferred >9k feet
Current Aircraft 1	<input checked="" type="checkbox"/>	<input checked="" type="checkbox"/>	<input type="checkbox"/>
Current Aircraft 2	<input checked="" type="checkbox"/>	<input type="checkbox"/>	<input type="checkbox"/>
Current Aircraft 3	<input type="checkbox"/>	<input type="checkbox"/>	<input type="checkbox"/>
Current Aircraft 4	<input type="checkbox"/>	<input type="checkbox"/>	<input type="checkbox"/>

7. What are the visibility minimums needed for SGH's primary runway for aircraft that you currently use?
 (Check one box for each aircraft.)

	Visibility Needed 1/2 mile	Visibility Needed 3/4 mile	Visibility Needed 1 mile
Current Aircraft 1	✓		
Current Aircraft 2	✓		
Current Aircraft 3			
Current Aircraft 4			

8. Do you use the crosswind runway at SGH?

- Yes
 No

9. If you do use the crosswind runway, how often do you use it?

ABOUT 50%

10. If you do use the crosswind runway, what is your length preference?

5k

11. Do you plan to upgrade your aircraft in the future?

- Yes
 No

If so, what runway length will you need?

12. Is there any other information or comments related to the responses that you provided to Questions 5-11?

WE USE SPECTRA JET FOR OUR AIRCRAFT MAINT AND
 WOULD LIKE TO SEE AS MUCH RUNWAY REMAIN AS POSSIBLE
 WITH GOOD SNOW REMOVAL. MINIMUM WOULD BE
 6500' W/ A PRECISION APPROACH

These questions relate to the Airport's features and amenities for tenant users.

13. How do you rate the following line services? (Please check one per service)

	Poor	Fair	Good	Excellent	NA
Hours of Operation			✓		
Efficiency/Timeliness			✓		
Friendliness			✓		
Tug services					✓
Preheats					✓
Other (please specify)					✓

14. How would you rate aircraft maintenance services? (Please check one per service)

	Poor	Fair	Good	Excellent	NA
Cost				✓	
Quality				✓	SPECTRA
Availability				✓	JET

15. How would you rate rental aircraft at the airport? (Please check one per line)

	Poor	Fair	Good	Excellent	NA
Availability					✓
Cost					✓
Quality					✓
Equipment/Avionics					✓

16. How would you rate aircraft instruction at the airport? (Please check one per line)

	Poor	Fair	Good	Excellent	NA
Availability of Instructors					✓
Efficiency/Timeliness					✓
Friendliness					✓

17. How would you rate the fueling at the airport? (Please check one per line.)

	Poor	Fair	Good	Excellent	NA
Competitiveness of cost of 100LL					✓
Competitiveness of cost of Jet A			✓		
Availability of 100LL					✓
Reliability of self-service 100LL					✓
Availability of Jet A			✓		
Other (please specify) _____					

18. How do you rate the airport facilities and management? (Please check one per line.)

	Poor	Fair	Good	Excellent	NA
Runway				✓	
Taxiways				✓	
NAVAIDS				✓	
Hangars					✓
Terminal					✓
Internet Access					✓

	Poor	Fair	Good	Excellent	NA
Pilot Supplies					✓
Overall Airport Appearance			✓		
Airport Management/Personnel					✓
Other (please specify)					

19. As compared to other airports of similar size, how do you rate the quality of service you receive at Springfield-Beckley Airport? (Please check one box.)

- Less quality service
- The same quality service
- Slightly better quality service
- Moderately better quality service
- Extremely better quality service

Comments

AIRPORT MANAGER WAS VERY HELPFUL AND RESPONSIVE TO REQUESTS FOR RUNWAY CONDITIONS THIS WINTER

20. Are there any other comments that you would like to share about the airport or staff?

Comments

21. May we contact you to follow up about your responses?

- Yes
- No

22. Contact Information

It is optional to provide your contact information. If you choose to share it, you will receive information related to the Master Plan update and about public meetings you can attend.

Name

Company

THE GORMAN RUPP COMPANY

Address

Box P.O. Box ~~1217~~ 1217

Address 2

City/Town

MANNSFIELD

State/Province

OHIO

ZIP/Postal Code

44901

Email Address

Phone Number

Springfield-Beckley Municipal Airport - Master Plan Update

Tenant/User Survey

This survey is part of the Master Plan update for Springfield-Beckley Municipal Airport. Your responses will be kept confidential. The survey results will be released in aggregate without any identifying information from individual respondents.

Individual responses will not be released to the airport or any other party without your written permission.

Thank you for taking the time to respond.

1. Are you a current airport tenant or based pilot? (Please check one)

- Yes
- No
- NA

2. Do you currently rent an aircraft from the airport or do you own your own aircraft? (Please check one)

- Rent
- Own
- Lease, Fractional
- NA

3. Do you use general aviation and/or corporate aircraft as a transportation method for business or pleasure?

- Business
- Personal

4. Where is/are your aircraft based?

KAGC

The following questions relate to runway length preferences at SGH.

5. Please tell us about the aircraft that you currently use at SGH.

Current Aircraft 1	LEARJET 45
Make/model	Bombardier LEARJET
Estimated Trips/year	
Furthest destination	
Current Aircraft 2	
Make/model	
Estimated Trips/year	
Furthest destination	
Current Aircraft 3	
Make/model	
Estimated Trips/year	
Furthest destination	
Current Aircraft 4	
Make/model	
Estimated Trips/year	
Furthest destination	

6. What are runway length preferences for SGH's primary runway for aircraft that you currently use? (Check one box for each aircraft.)

	Runway Length Preferred <9k feet	Runway Length Preferred 9k feet	Runway Length Preferred >9k feet
Current Aircraft 1		X	
Current Aircraft 2			
Current Aircraft 3			
Current Aircraft 4			

7. What are the visibility minimums needed for SGH's primary runway for aircraft that you currently use?
 (Check one box for each aircraft.)

	Visibility Needed 1/2 mile	Visibility Needed 3/4 mile	Visibility Needed 1 mile
Current Aircraft 1	X		
Current Aircraft 2			
Current Aircraft 3			
Current Aircraft 4			

8. Do you use the crosswind runway at SGH?

- Yes
 No

9. If you do use the crosswind runway, how often do you use it?

Depends on winds on arrival.

10. If you do use the crosswind runway, what is your length preference?

5000'

11. Do you plan to upgrade your aircraft in the future?

- Yes
 No

If so, what runway length will you need?

6000 minimum

12. Is there any other information or comments related to the responses that you provided to Questions 5-11?

These questions relate to the Airport's features and amenities for tenant users.

13. How do you rate the following line services? (Please check one per service)

	Poor	Fair	Good	Excellent	NA
Hours of Operation					✓
Efficiency/Timeliness				✓	
Friendliness				✓	
Tug services				✓	
Preheats					✓
Other (please specify) MNTC.				✓	

14. How would you rate aircraft maintenance services? (Please check one per service)

	Poor	Fair	Good	Excellent	NA
Cost				X	
Quality				X	
Availability				X	

won't find a Better Learjet SVC. center in the U.S.

15. How would you rate rental aircraft at the airport? (Please check one per line)

	Poor	Fair	Good	Excellent	NA
Availability					✓
Cost					✓
Quality					✓
Equipment/Avionics					✓

16. How would you rate aircraft instruction at the airport? (Please check one per line)

	Poor	Fair	Good	Excellent	NA
Availability of instructors					✓
Efficiency/Timeliness					✓
Friendliness					✓

17. How would you rate the fueling at the airport? (Please check one per line.)

	Poor	Fair	Good	Excellent	NA
Competitiveness of cost of 100LL					✓
Competitiveness of cost of Jet A				✓	
Availability of 100LL					✓
Reliability of self-service 100LL					✓
Availability of Jet A				✓	
Other (please specify) _____					

18. How do you rate the airport facilities and management? (Please check one per line.)

	Poor	Fair	Good	Excellent	NA
Runway				✓	
Taxiways				✓	
NAVAIDS				✓	
Hangars				✓	
Terminal					✓
Internet Access					✓

	Poor	Fair	Good	Excellent	NA
Pilot Supplies					✓
Overall Airport Appearance				✓	
Airport Management/Personnel				✓	
Other (please specify) SpeedJet MNTC !!				✓	

19. As compared to other airports of similar size, how do you rate the quality of service you receive at Springfield-Beckley Airport? (Please check one box.)

- Less quality service
- The same quality service
- Slightly better quality service
- Moderately better quality service
- Extremely better quality service

Comments

20. Are there any other comments that you would like to share about the airport or staff?

Comments

Well kept. We use the airport mainly for MNTC.
 won't find a better Learjet shop anywhere!

21. May we contact you to follow up about your responses?

- Yes
- No

22. Contact Information

It is optional to provide your contact information. If you choose to share it, you will receive information related to the Master Plan update and about public meetings you can attend.

Name

Company

TMC Aviation

Address

950 Penn Ave

Address 2

City/Town

Pittsburgh

State/Province

PA

ZIP/Postal Code

15222

Email Address

Phone Number